

Taiwan Chi-Chi 21-9-1999

M = 7.6

Foco: 33 Km

Amáx = 0.86g

Una isla asentada sobre una falla

Una gran falla recorre el este de Asia. Comienza en Kamchatka (Rusia), bordea Japón y Filipinas y llega hasta Nueva Zelanda. A lo largo de ella se encuentran varios volcanes activos.



El gran terremoto de Taiwan tuvo una magnitud de 7,6 en la escala de Richter. El epicentro se situó a unos 50 km de profundidad.

G. H. / EL PAÍS

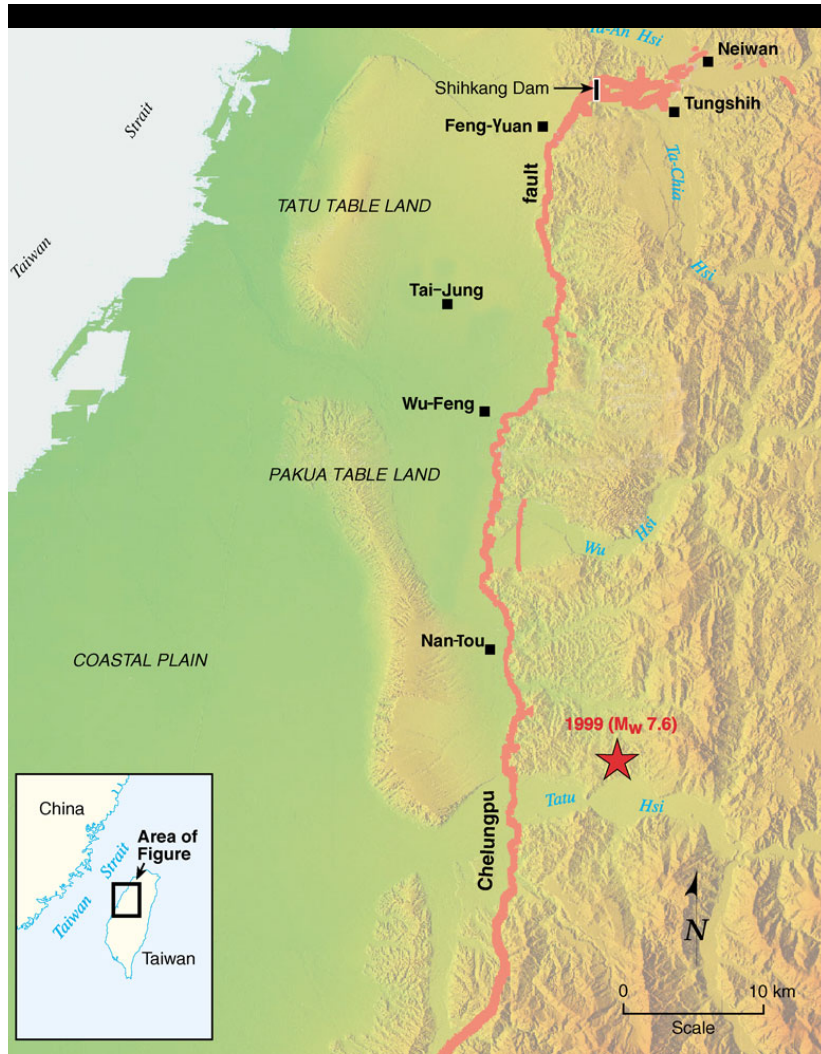
Edición: A. San Bartolomé. Fuentes:

http://www2.rcep.dpri.kyoto-u.ac.jp/~sato/taiwan/pict_clas.html

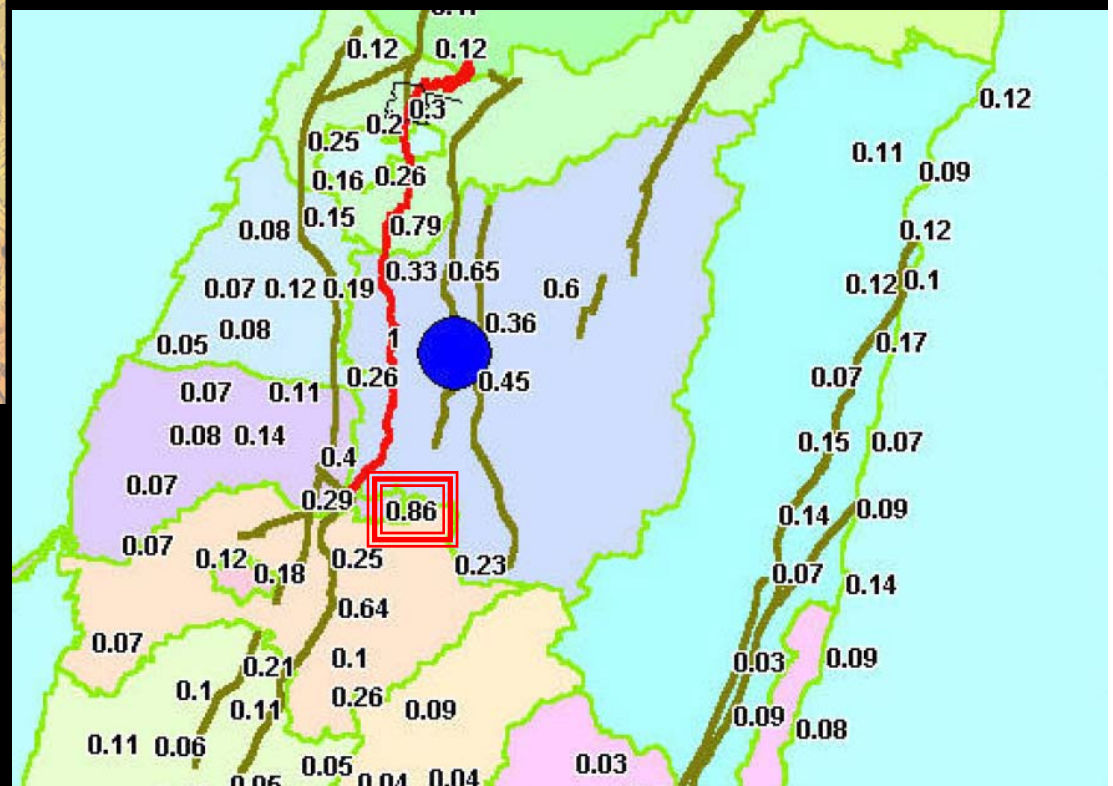
<http://www.ctsee.org.tw/pdf/ee0201/es0201-1.pdf>

http://www.ngdc.noaa.gov/nndc/struts/results?eq_1=47&t=101634&s=0&d=4&d=44

<http://cires.colorado.edu/~bilham/TaiwanChiChi1999.htm>



Aceleraciones Horizontales Máximas (g)



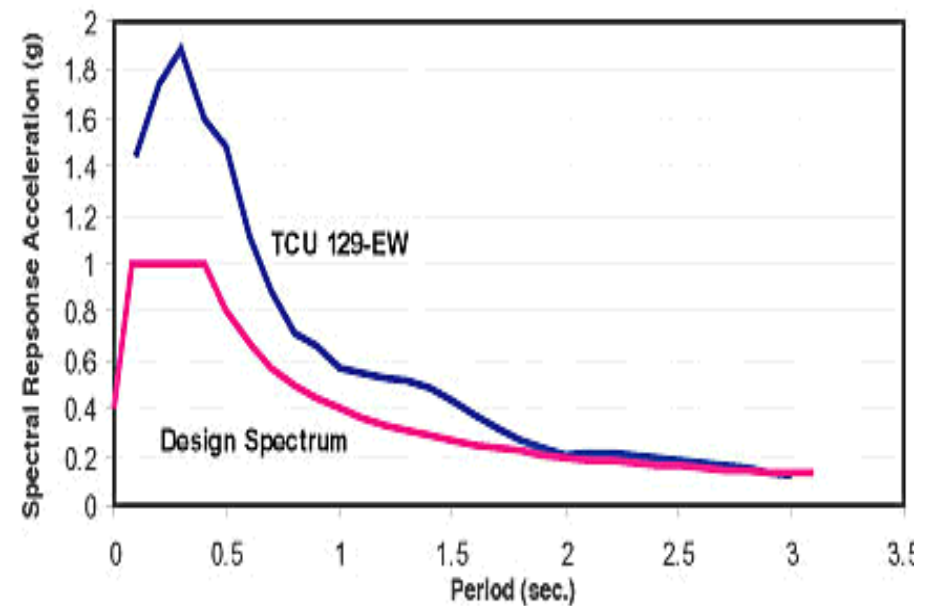
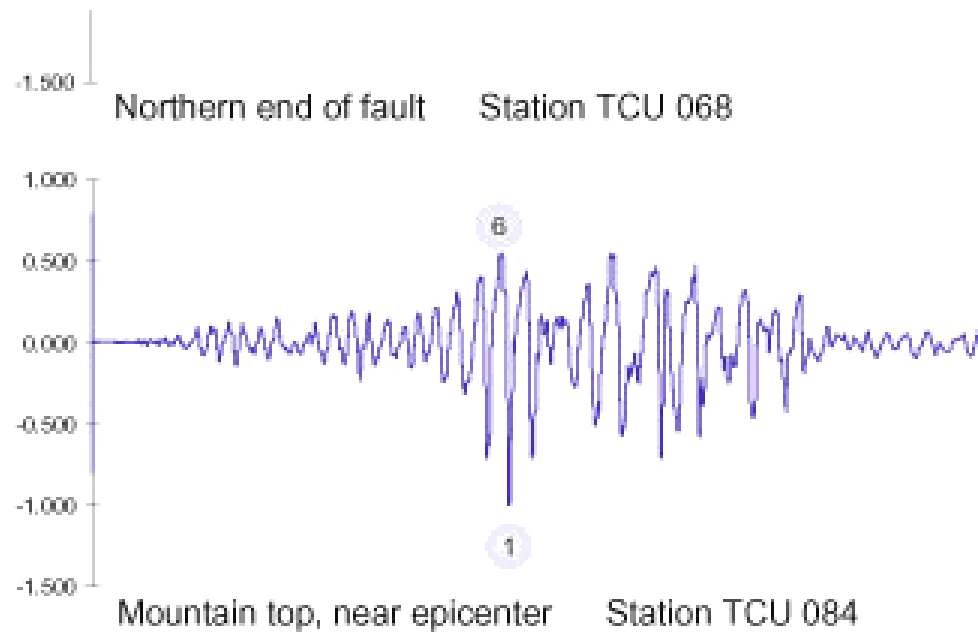
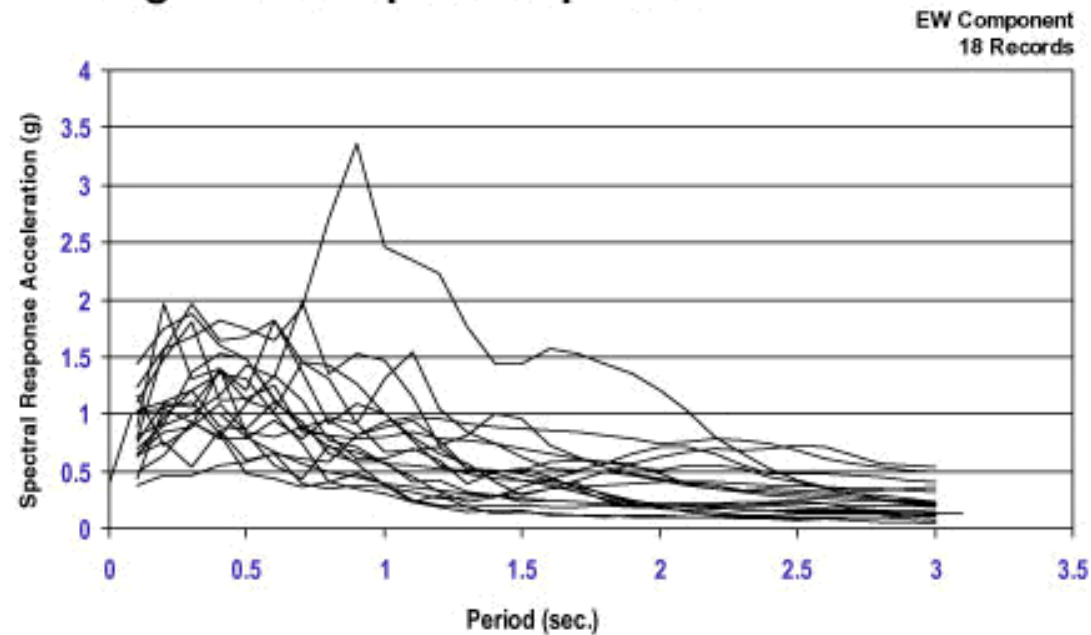


Figure 2 Response Spectra





**Falla
Tectónica**







Represa



Represa











Licuación









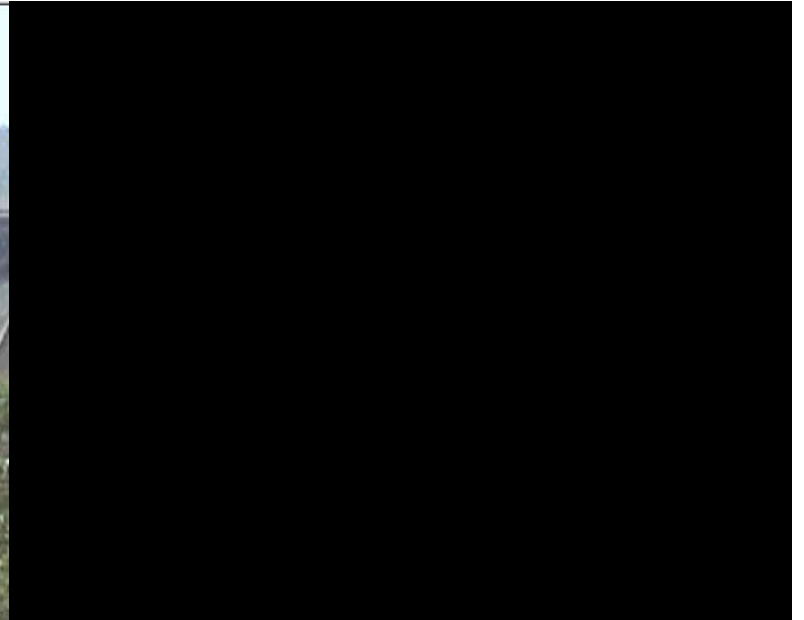
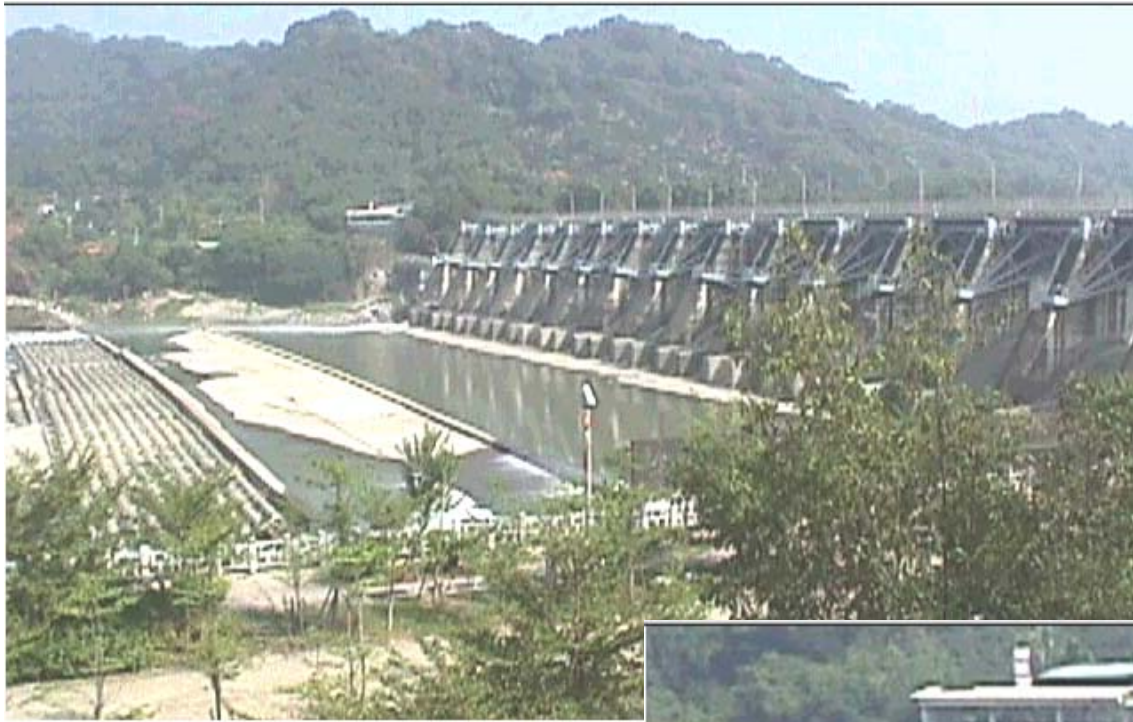
Deslizamientos





Traslape







Pisos 6 y 8. Edificio de 15 pisos.



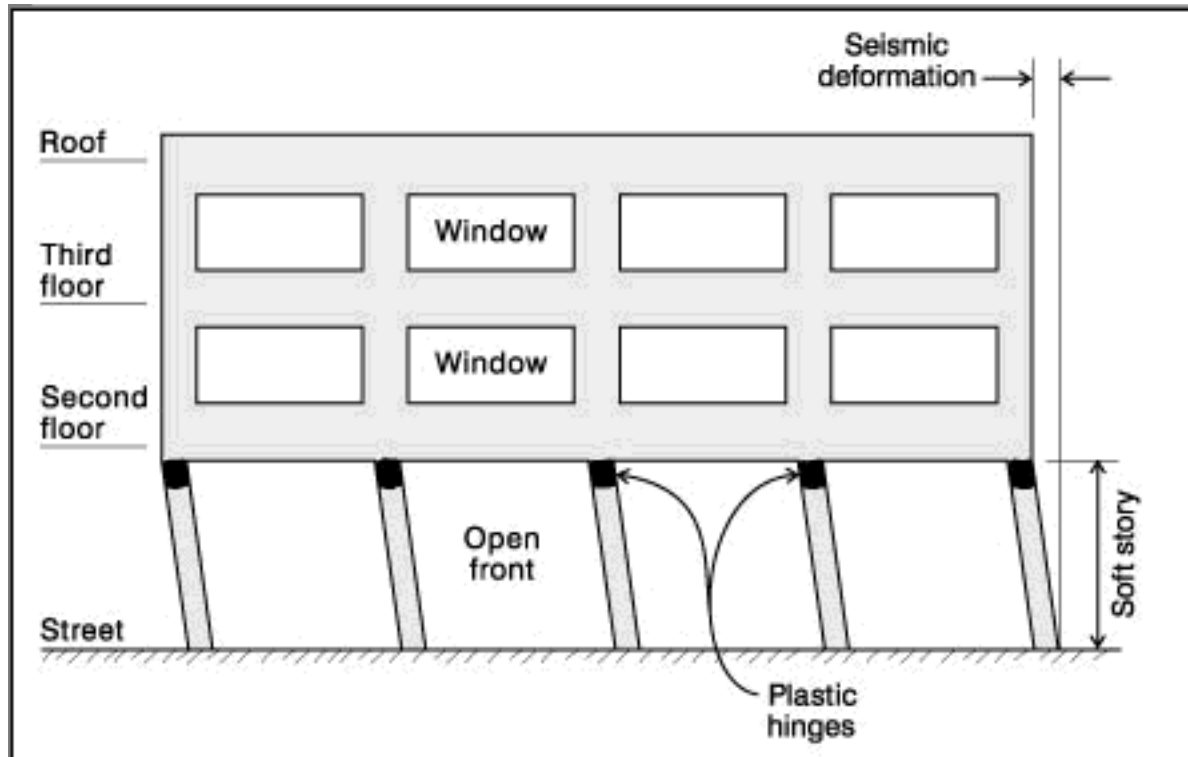






Albañilería Confinada

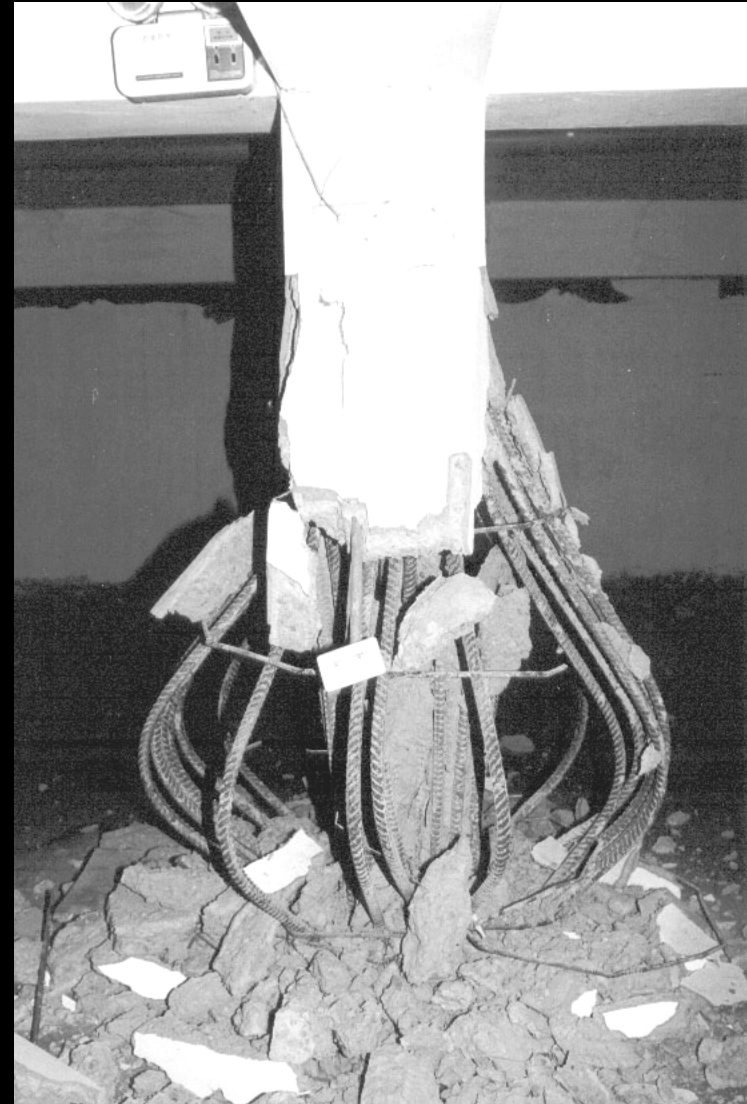






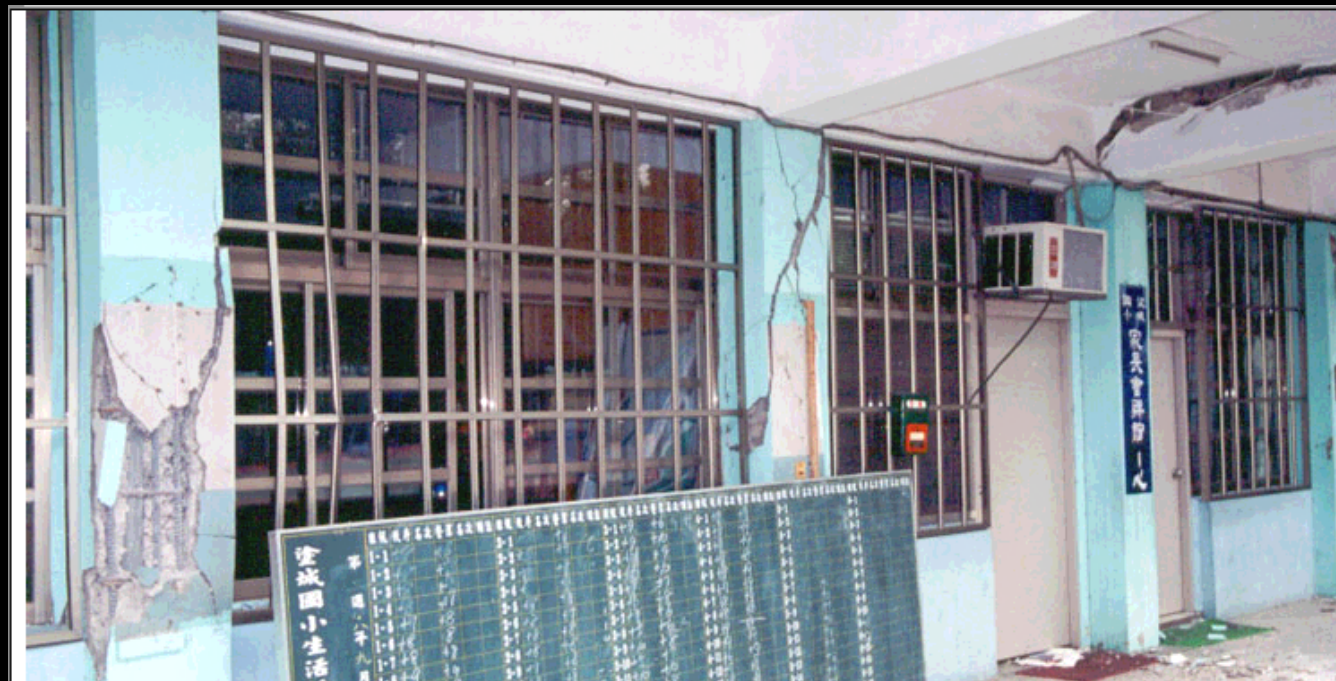


**Columna interior.
Edificio de 4 pisos**





**Colegio
3 pisos**





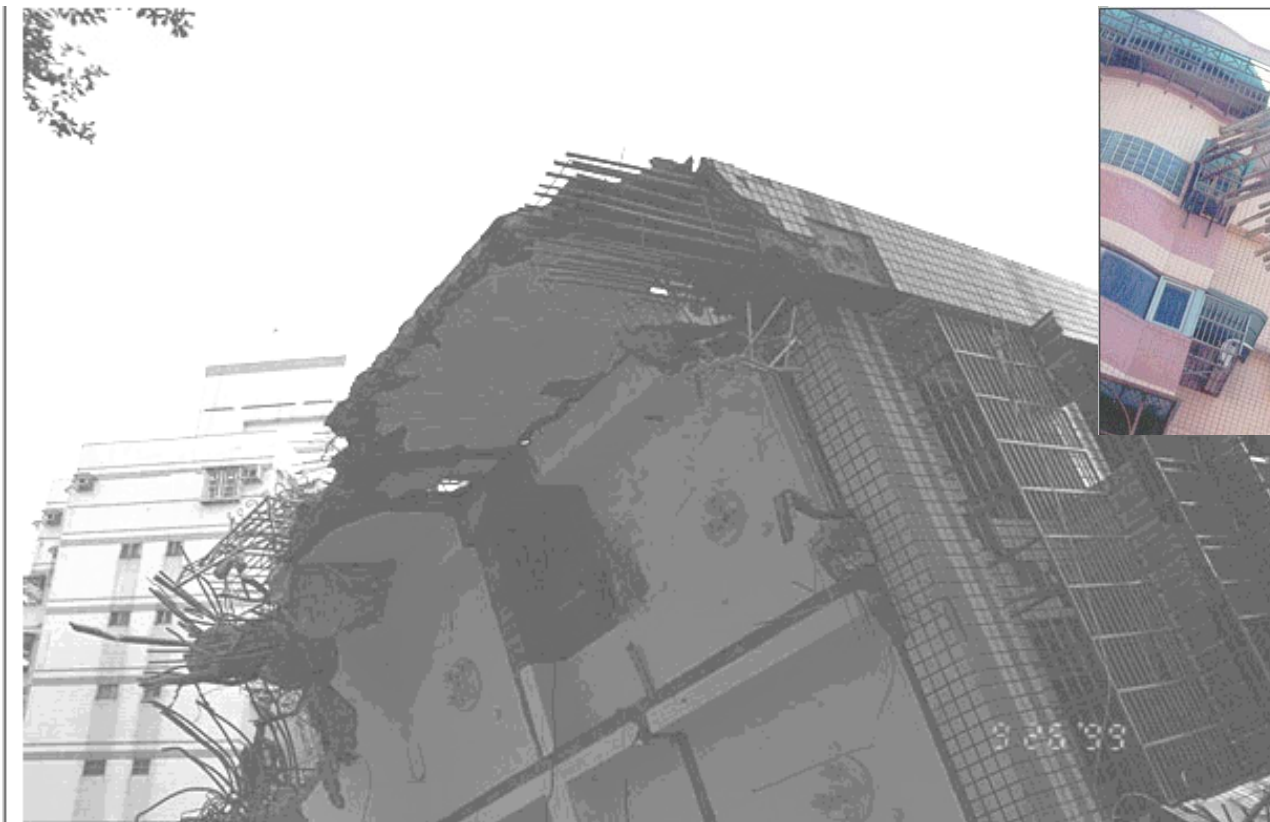


**14 pisos
metálico
en
construcción**







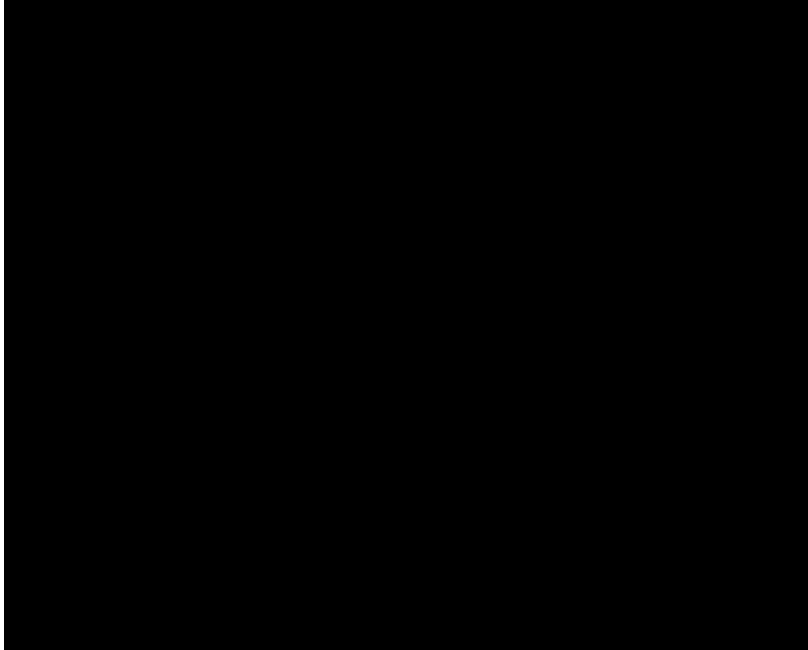
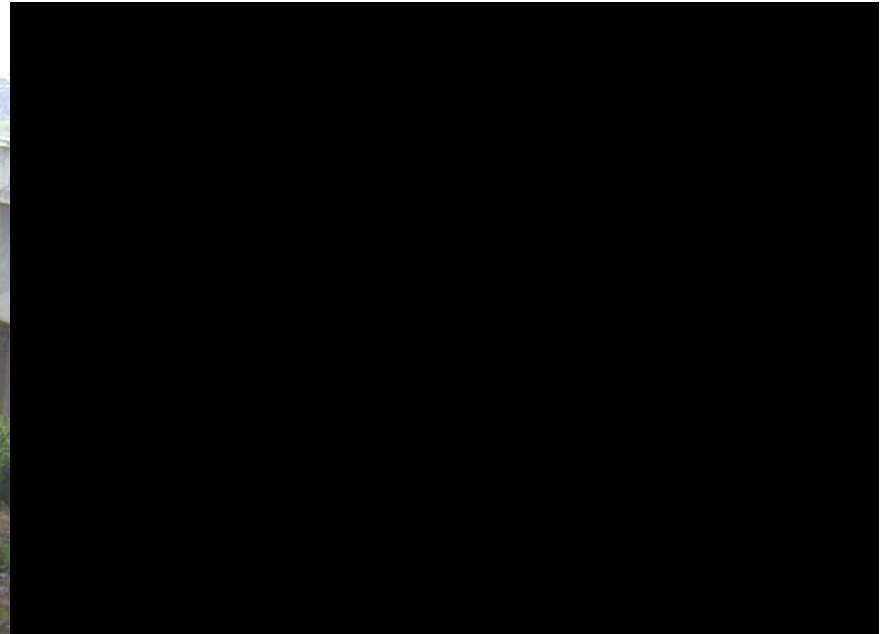


Dowell fuera del núcleo









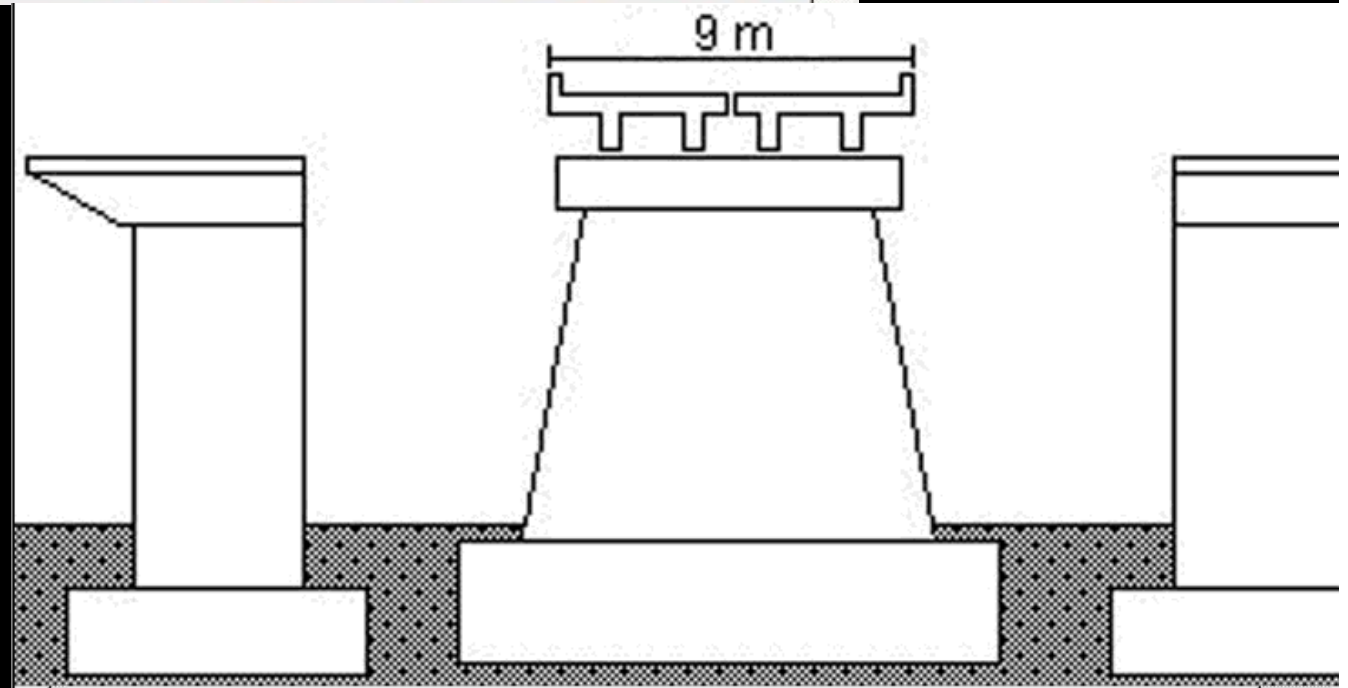


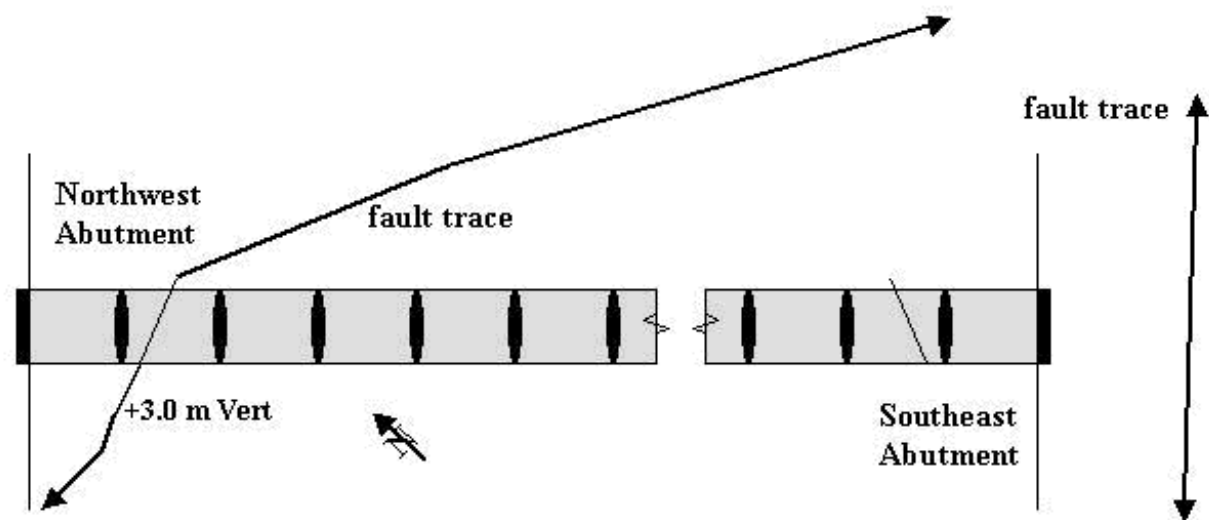
Wu-Shi





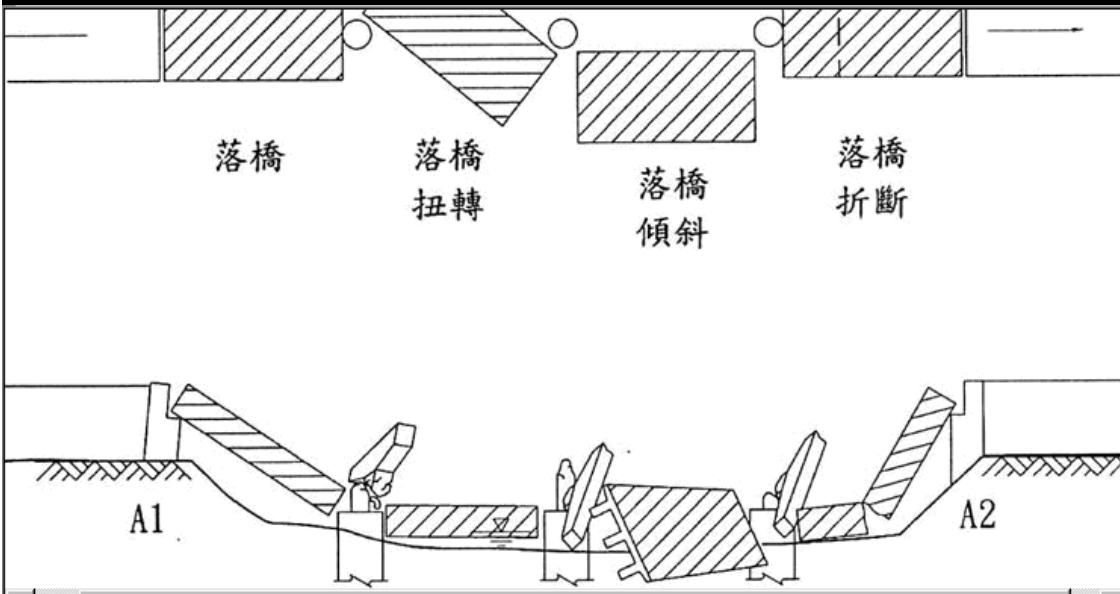
Yi-Jiang

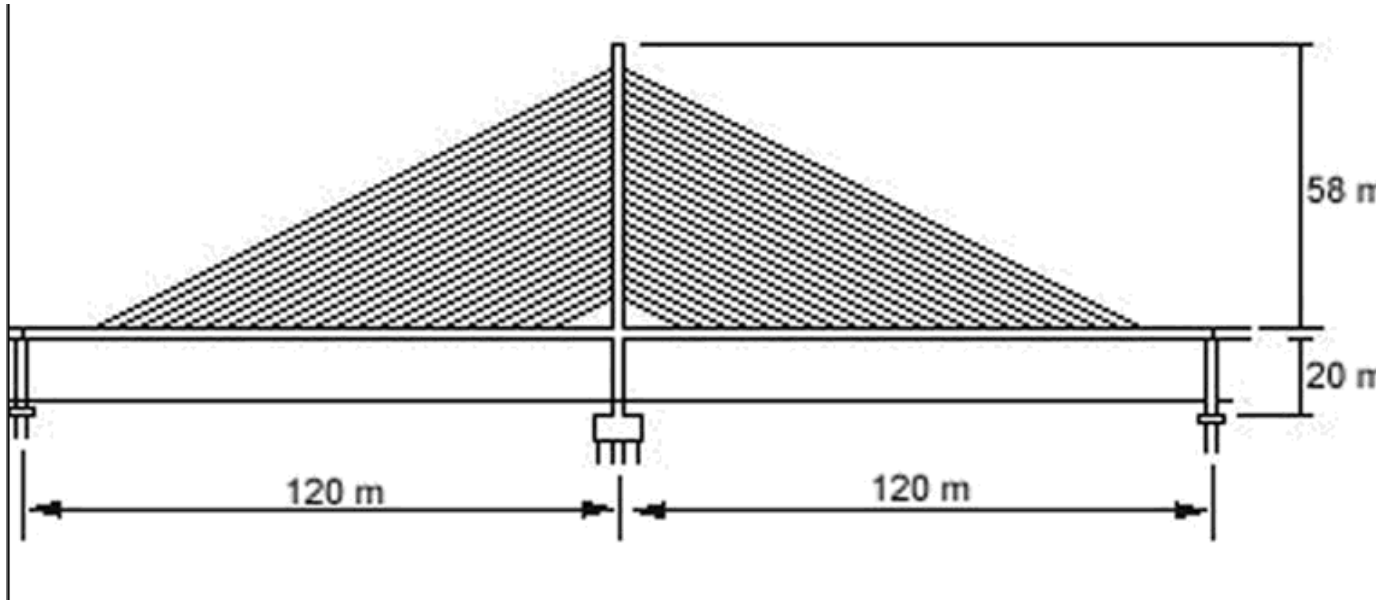






Tung-Tou





Chi-Lu





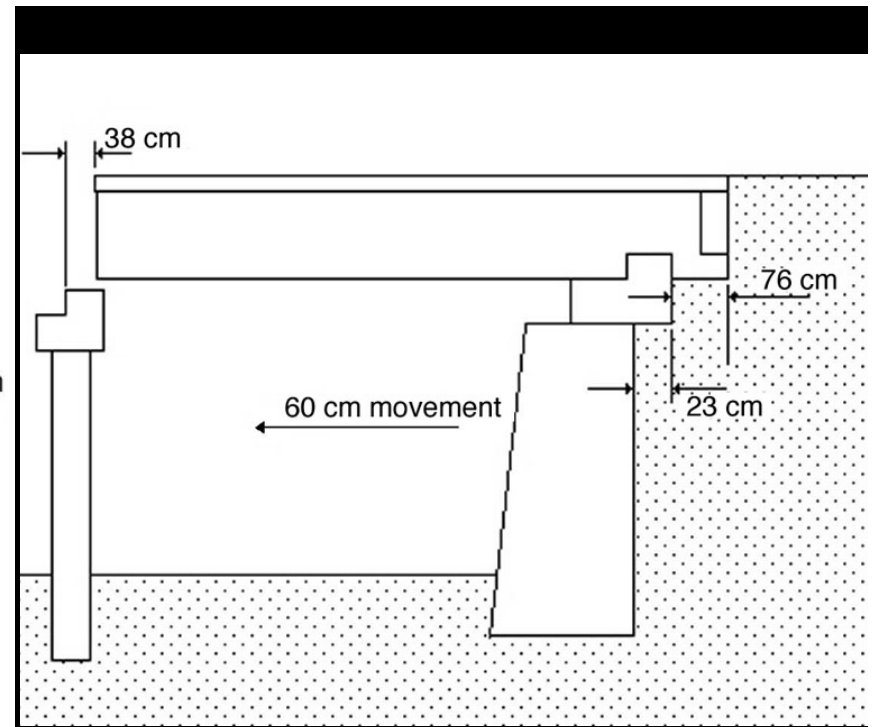
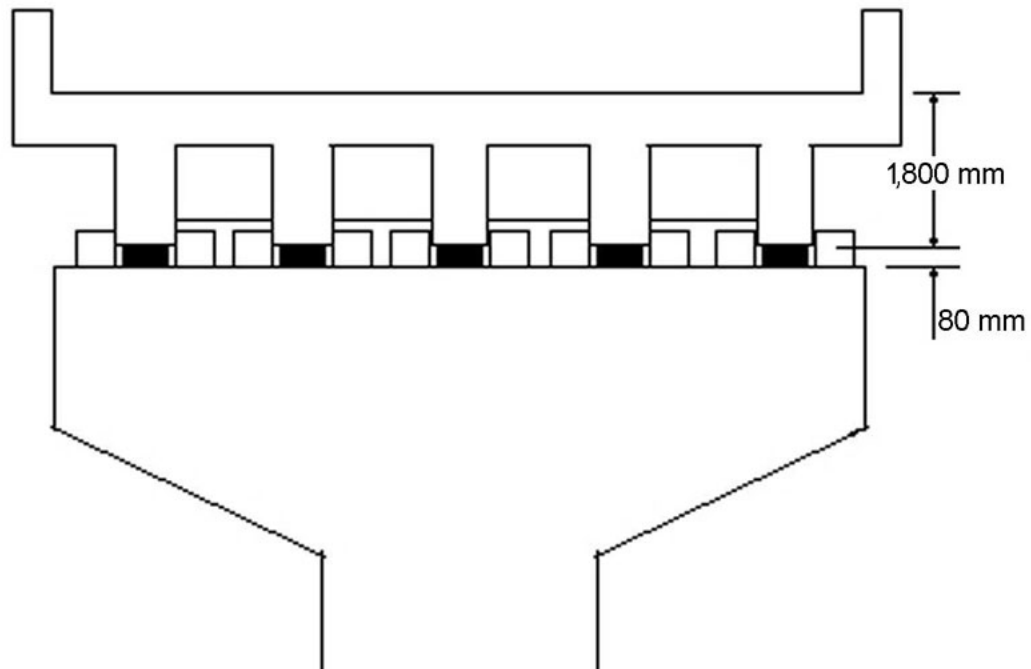
Shr-Wei





Mau-Luo-Shi



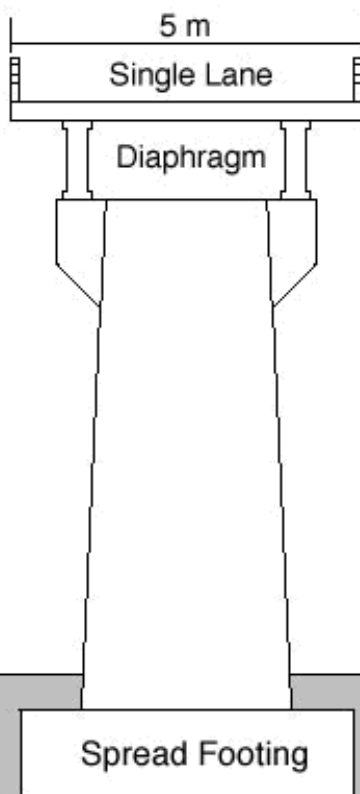


Chang-Geng



Pin-Ling





Da-Keng







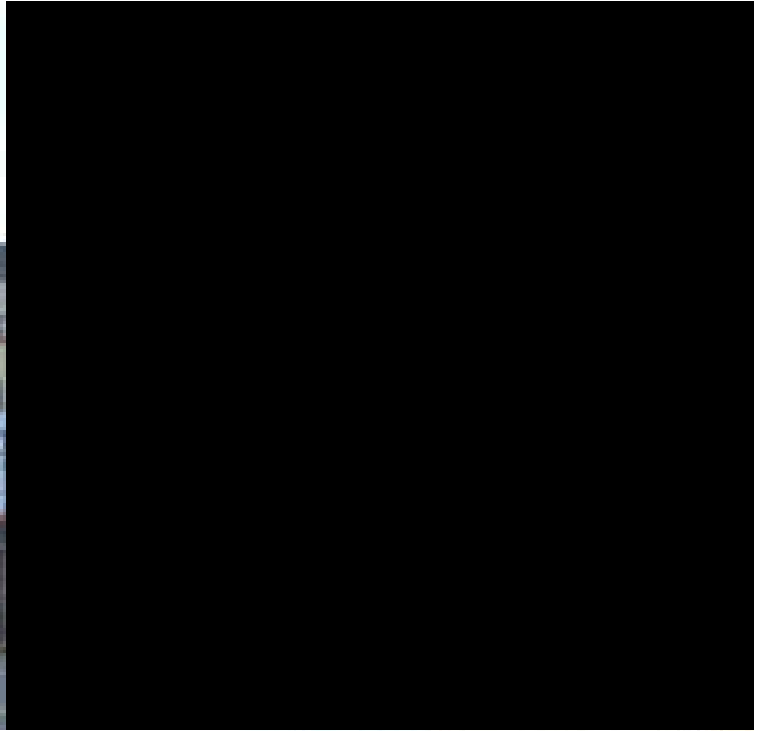


**shotcrete
falla
por corte**







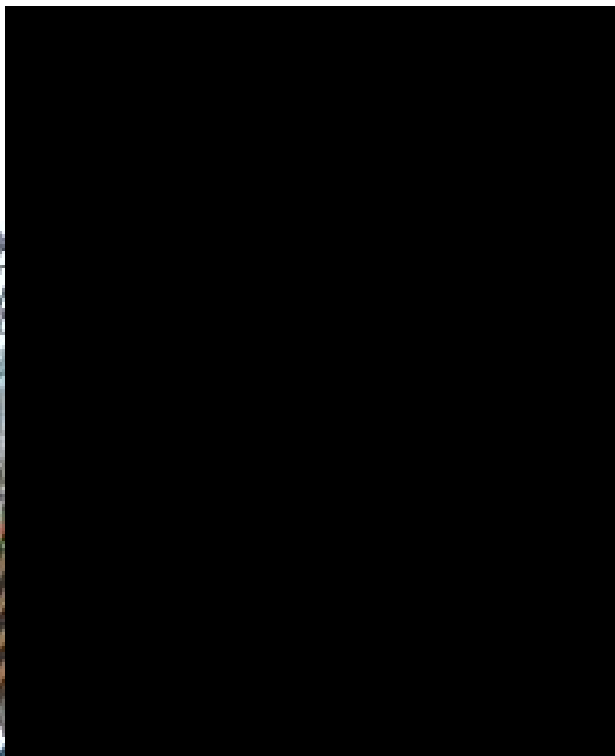


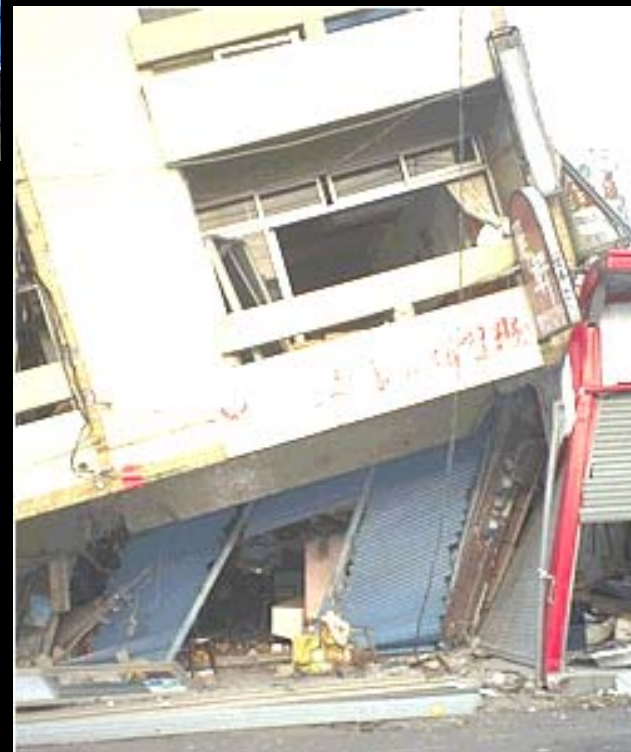














**Edificios modernos
con pocos daños en
Tai-Chung**



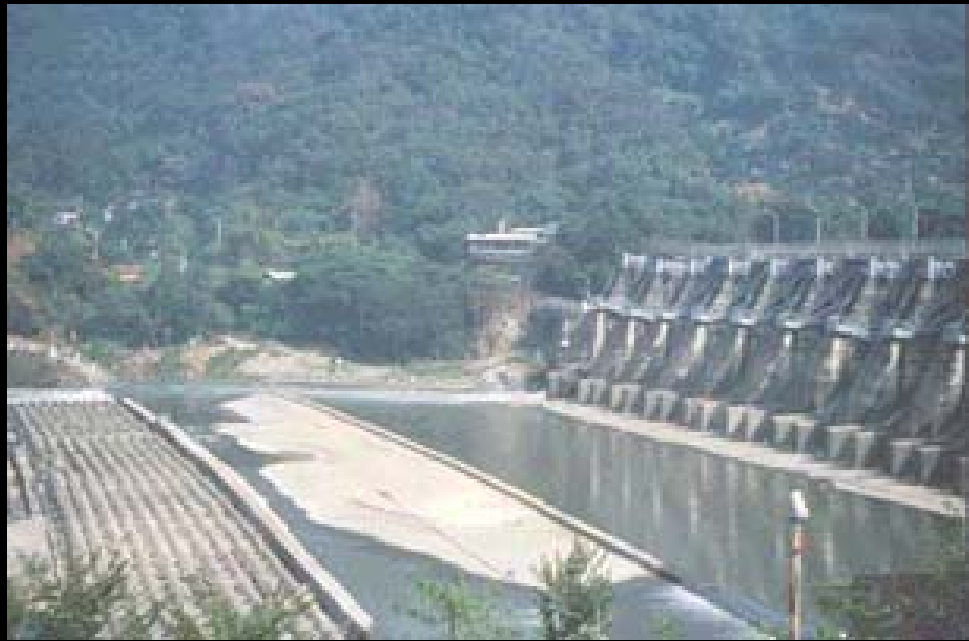


**Detalles de
edificios en
construcción
con buen
comportamiento**

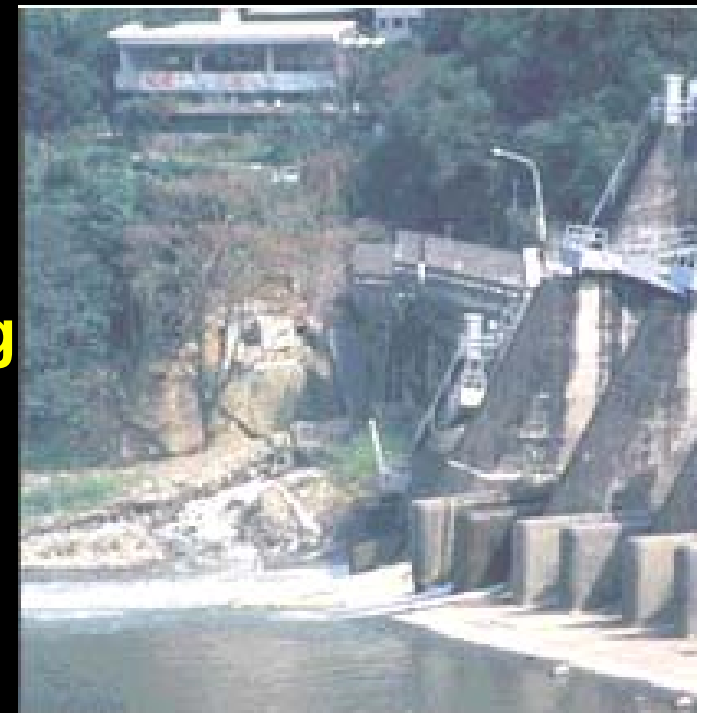




Licuación en Wu-Feng



**Represa
Shih-Kang**





Fallas cercanas o que atraviesan estructuras





Fallas que atraviesan estructuras



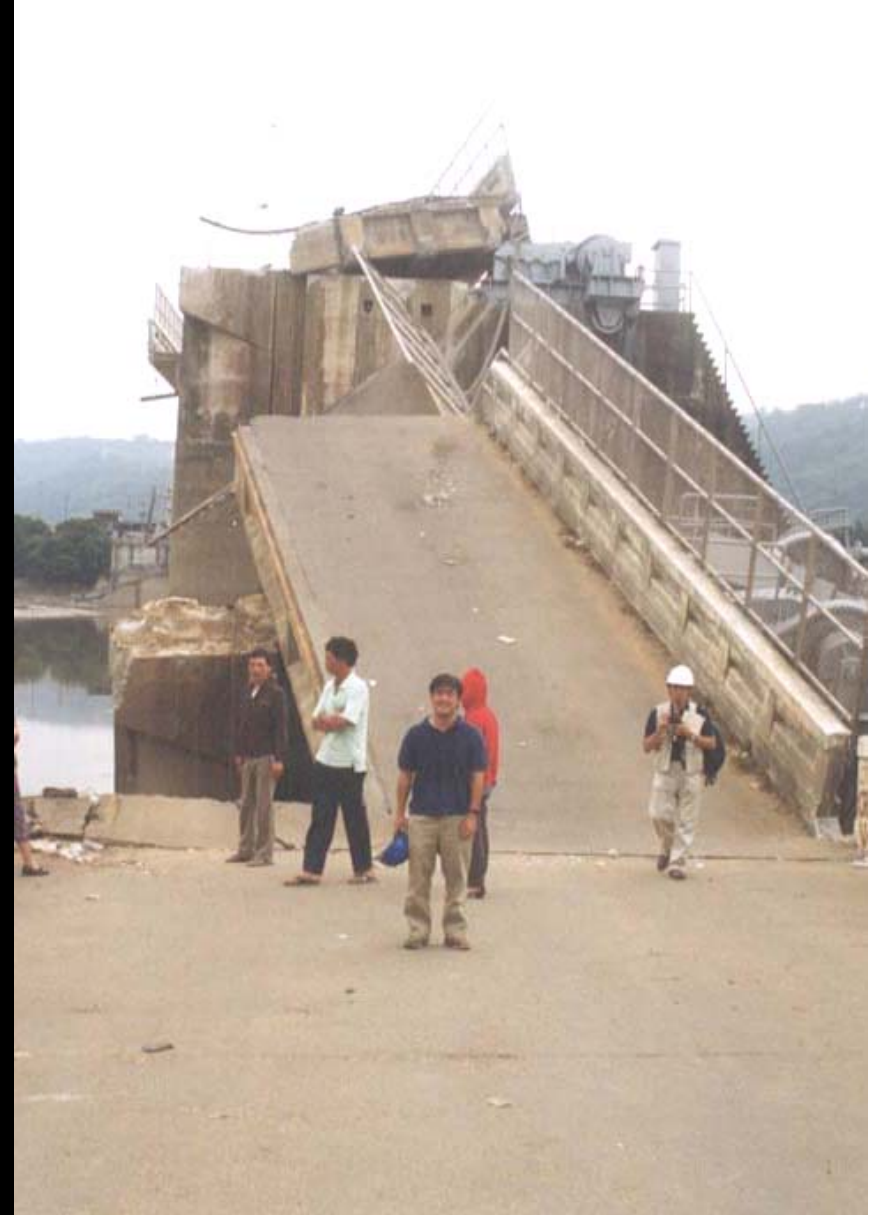


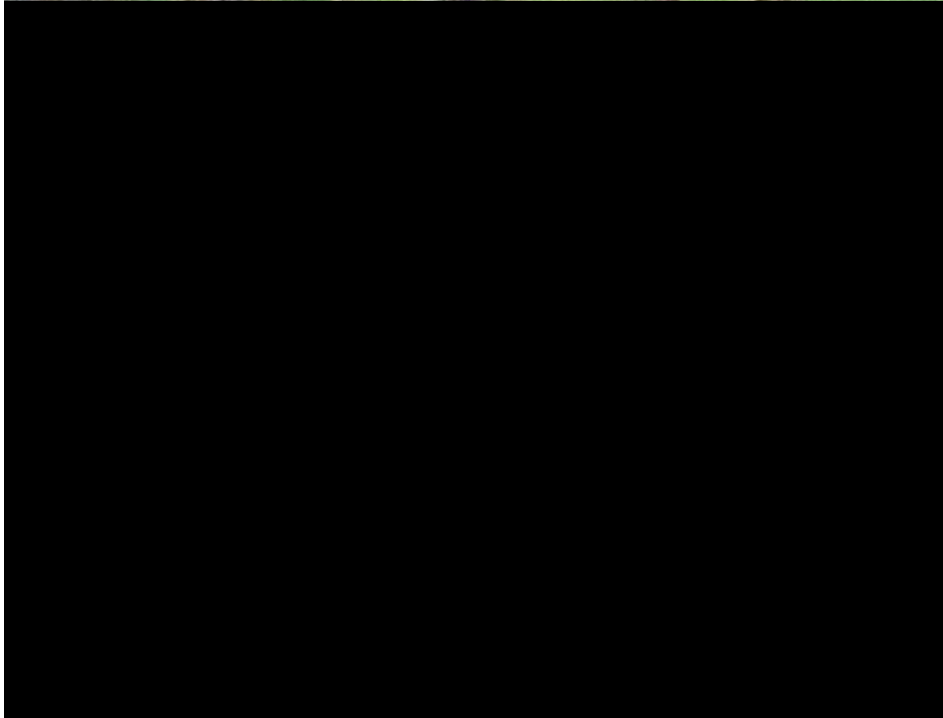
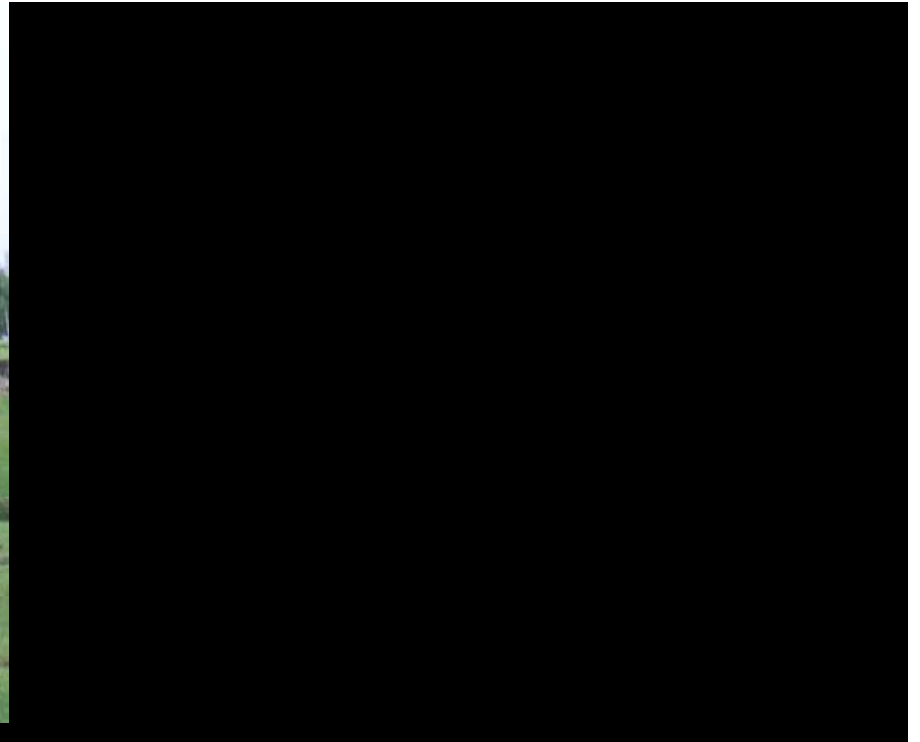
Fallas que atraviesan estructuras













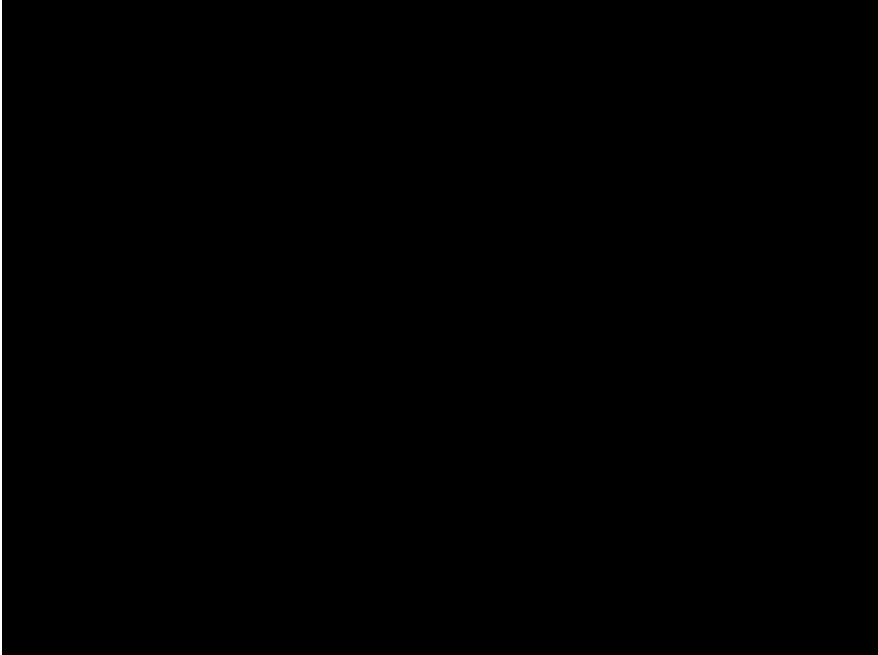
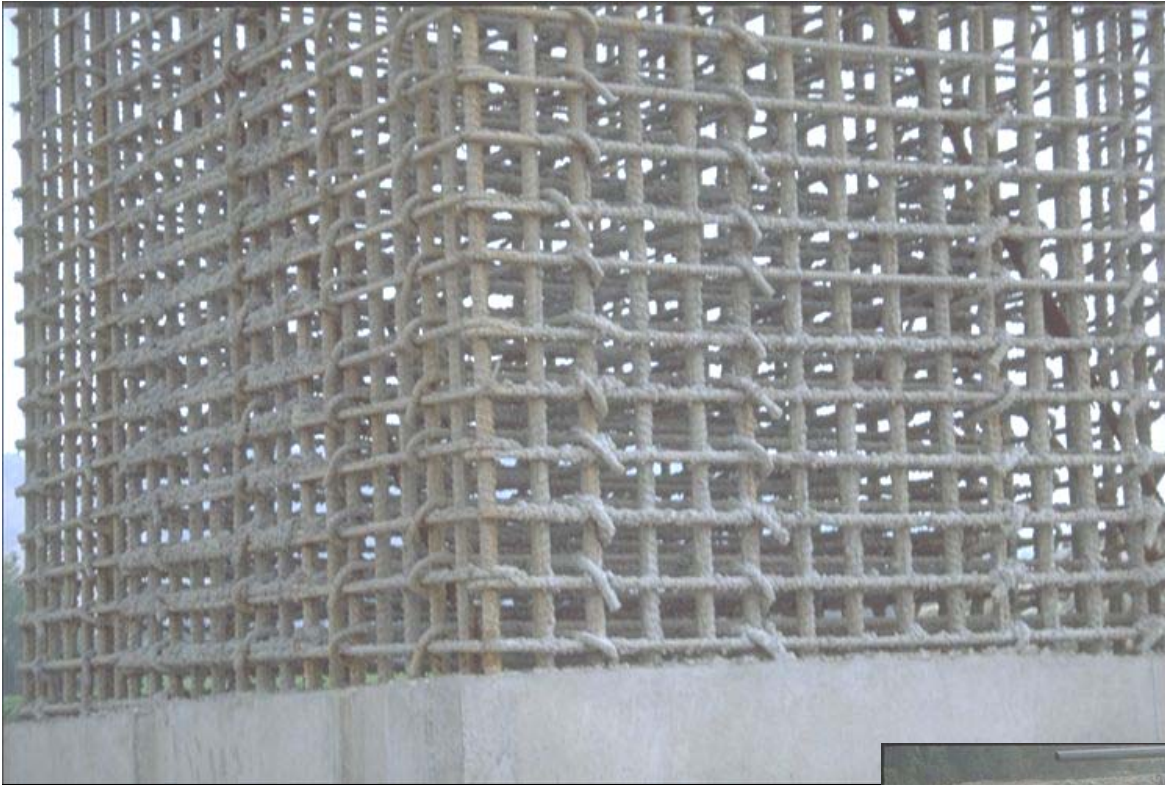
Piso Blando











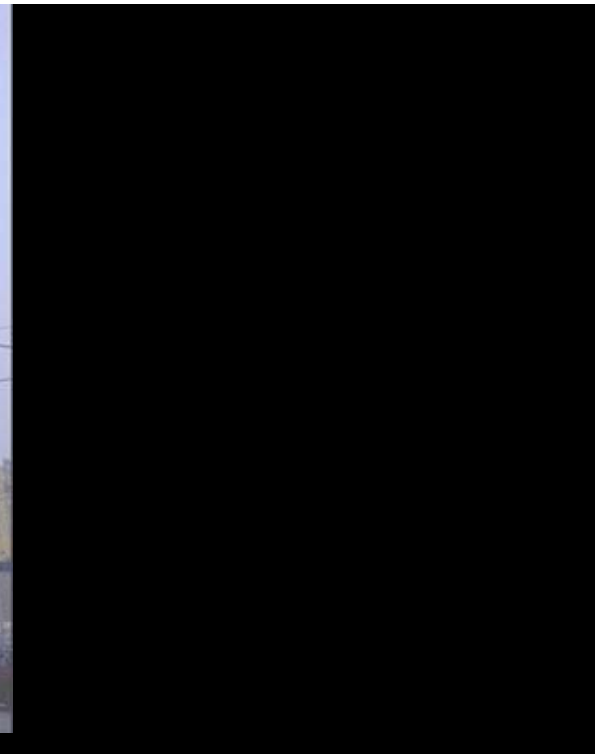














Dongshi, 15 pisos





