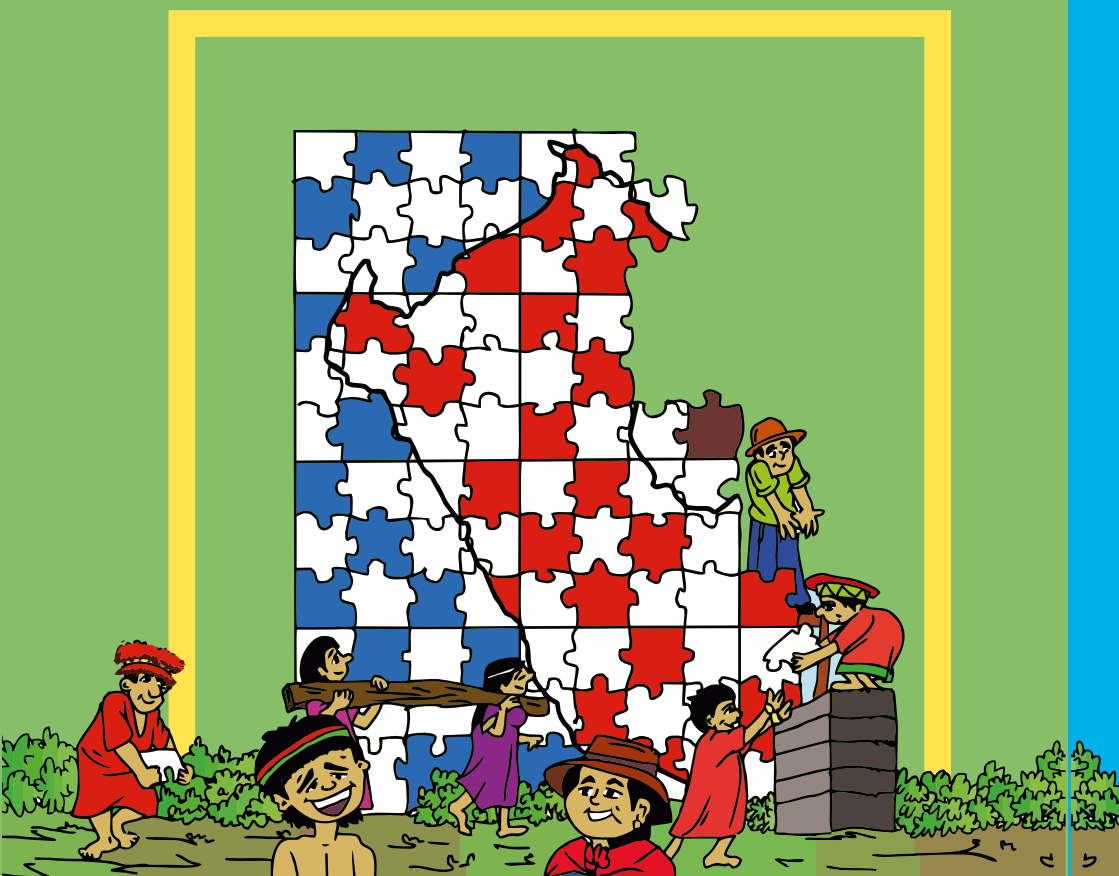


PENEN NISHIAPATUNA KETERINPUA KANPUA  
YA'UWANPUA INARAN YA'WEREWAKE YA'WEREWAPITAMARE

# TIRIHCHU INARAN NAHTETATE NI'KAKASU NUITAMARE YA'UTERINPUA



## **Tirihchu inaran nahtetate ni'kakasu nuitamare ya'uterinpua**

Poder Judicial del Perú

Ministerio de Justicia y Derechos Humanos del Perú

Oficina Nacional de Justicia de Paz y Justicia Indígena

Dirección General de Defensa Pública y Acceso a la Justicia

EUROsociAL II, Programa para la Cohesión Social en América Latina

Expertise France - Socio coordinador

Organización Internacional para el Desarrollo (IDLO) - Socio operativo.

Este documento fue elaborado en el marco del proyecto que el Programa EUROsociAL II - Sector Justicia - Acción Acceso al Derecho, e IDLO en calidad de socio operativo, desarrolló para el "Fortalecimiento de mecanismos de divulgación y de servicios de orientación y asistencia legal para el acceso al derecho prestados por el Estado en colaboración con la sociedad civil para población en condición de vulnerabilidad en el marco de las 100 Reglas de Brasilia". Bajo esta iniciativa, el Programa, en coordinación con el Poder Judicial y el Ministerio de Justicia y Derechos Humanos del Estado peruano, desarrolló el Protocolo de atención y orientación legal con enfoque intercultural dirigido a funcionarios del sistema estatal de justicia en los Distritos de San Martín, Loreto y Ucayali. Este documento traducido al quechua, ajujuna y shawi corresponde a la versión en español del Material de orientación legal intercultural para comuneros nativos y comunidades indígenas. Conociendo nuestros derechos y deberes (2014) y que puede encontrarse en [www.xxxxxx](http://www.xxxxxx)

2

Equipo técnico EUROsociAL II -IDLO: Kenneth Eduardo Garcés - Experto nacional  
Víctor Manuel Rodríguez - Experto internacional  
Olga Lucía Pérez - Experta sectorial  
Elena Incisa di Camerana - Gerente de Proyecto

Edición: Oficina Nacional de Justicia de Paz y Justicia Indígena  
Edificio "Carlos Zavala Loayza", Jr. Manuel Cuadros 182, Lima – Perú  
Teléfono: 511 4101010 Anexo 14348 email: [contacto@onajup.gob.pe](mailto:contacto@onajup.gob.pe)  
[www.onajup.gob.pe](http://www.onajup.gob.pe)  
Lima – Perú  
2015

La presente publicación ha sido elaborada con la asistencia de la Unión Europea. El contenido de la misma es responsabilidad exclusiva del editor y en ningún caso se debe considerar que refleje la opinión de la Unión Europea.

Hecho el depósito legal en la Biblioteca Nacional del Perú...

Diagramación: José Rodríguez Casachhua  
Traducción castellano-shawi: Wilder Napo Huayunga, Miller López Santillán

# A´NUNAMEN

<b>NIA´NURINSU</b>	<b>5</b>
<b>PRESENTACIÓN</b>	<b>6</b>
<b>KAPITURU A´NARA. ¿UNPUNTA NIHKAKASU MA´SHA NUYA NIHKAKAMARE?</b>	<b>7</b>
1.1 Piyapi acha´erinsu	9
1.2 Ma´sha nahtantupisu	14
1.3 Kirihka tuhkumintumare anuyahrtupisu	17
1.4 Ya´muresu, ya´panesu	21
1.5 Sanapi, sanapia´wa, wa´washa ku nuyawe ya´werinsu	27
1.6 Uhshake ata´tupisu, ku nuwantapirinwe ku naniyahtarapirinwe pi´ihpinen	32
1.7 Tehpaterinsu	37
1.8 Chimipi yanupisu, yahchapisu	41
1.9 Munshiwapisu	45
1.10 Nara na´kun, na´kun uhkuwipisu	48
1.11 Ya´ipi sha´wirinsu	52
<b>KAPITURU KAHTU. ISTATU PIRUANU NINANUA´WARU´SARE</b>	<b>55</b>
2.1 Piru nanan anuyaterinsu	57
2.2 Istatu piruanu Ninanua´waru´sare	62
2.3 Unpu anuyatapunta nanan istatu piruanu ninanua´waru´sake	65
2.4 Wa´anu´sa sahkatu ya´wetupisu nihkakaisu, piyapiru´samare ninanua´waru´sake	71
2.5 Wa´anu´sa na´kun nanan ya´wetupisu ku nu´tehken sahkatu nihpachinarawe	73

<b>KAPITURU KARA PIYAPIRU'SA, NINANUA'WARU'SANTA TIRIHCHUSAHKATU NIHKAKAISU YA'WETERINSU</b>	75
3.1 Sahkatu nihkakasu istatu kanpu piyapiru'samare inanan ninanua'waru'samarenta	76
3.2 Tirihchu ya'weterinsu kanpu piyapi'sa, ninanu ya'weteru'sa	78
3.3 Tirihchuya'weterinsu ninanu ya'weteru'samare	88
3.4 Kanpu piyapi, ninanua'wanta sahkatu ya'weterinsu	99
<b>KIRIHKA WENTUNU'SA</b>	101
Nanan tihkinamen:	102
<b>NISHA, NISHA KIRIHKA NINESU</b>	107
<b>A'NA KIRIHKARU'SAKERANTA UHKUWIPISU</b>	121

# NIA' NURINSU

Ihsu karihka, A'nurarin Ley teninchachin nu'tehken, ni'tun pa'sarin kanpu piyapiru'samare ninanu ya'weteru'samare, a'nataweri nahpuninnananimahpachina, ya'wetupachina; yunkikaisumare unpu anuyahtakaisuna, unpu timantatakaisu, tinunsiatakaisuna, yawepike, taweri we'ninke. Nihpi, nishipi, kanpu piyapi'sari nuntakaisumare, nahpumantarawatun wa'waru'sari, sanapia'waru'sari, nanua'waru'sari, wi'napia'waru'sarinta nuntakaisumare. Inake nuwitakaisumare tirihchunena inaran unpu ya'wekaisuna ma sahkatauta nihkakaisu ya'wetupi. Nahpumantarawatun ihsu karihka kahtawaunkema, aya'karirarinkema na'kun, na'kun lstatuke. Ku inaihchinwe, a'nataweri, niachintakamare, sahkatau ninewake, yamutewa ninunterewake, ku nihpun sirwiaunpua kapahsitasiunke, inake nunkakaisu nihpachin kanpua tirihchunenpuamare, insetana nani ninanua'wake ya'werewake.

Taweri pa'ninke ihsu karihka nuya ni'pachina, nuya nuhshitumapike kenantumapachina, nahpuruware ni'puna nu'tehken nuninsu, nahpuwinahchin kanpu piyapi'santa tirihchu a'nawitapuchin piruanuru'sapuchin inawanta, nahpuapunawe nuya nuya puchin inawasu ya'wetupi. Ina tirihchu nu'tehken, nuya nuyapuchin nininsu kanpu piyapiru'samare. Ina kenanariwa irahkapanka ninanuru'sa, nisha, nihsha paiseru'sa yamurawatuna nunpi kanpu piyapiru'samare, inake Pirunta ninin, nahtanterin, nituhterin. Inachi ina Kunpiñu 169 OIT, itupike. Inake nuninsu unpuwin Tirihchuta nihka ya'wetupisu kanpu piyapi'sa, nihsha nihsha parihchike ya'wepisupitanta, ina ihsu karihkake nuninsu kenanariwa.

Ihsu karihka taweri pa'ninke nanitere ahkaete anuyahtakasu, kanpita tuhpatama, nunteramake ku intintipatumawe nishitupisu, ahkete anuyahtakasu kanpita tuhpatama. ⇐

# PRESENTACIÓN

Este documento es un Material de Orientación Legal dirigido a las personas integrantes de comunidades nativas que se encuentran involucradas en algún conflicto o que requieran información para plantear alguna queja, demanda o denuncia en el futuro. Fue diseñado para que lo lean todos los comuneros nativos, inclusive los niños, niñas y adolescentes si fuese posible, a fin que tengan una guía sobre sus derechos, deberes y responsabilidades; y asimismo sobre la forma en que pueden acceder al sistema de justicia del Estado, cuando lo necesiten. Además puede ser utilizado como material de apoyo cuando se realicen capacitaciones sobre derechos de los pueblos indígenas.

6

Conforme se avance en la revisión de su contenido será incuestionable comprender que los comuneros nativos tienen los mismos derechos que cualquier persona peruana, pero, además, tienen derechos diferenciados o especiales, reconocidos por tratados internacionales de los que el Perú es parte, como por ejemplo el Convenio N° 169 de la Organización Internacional del Trabajo sobre Derechos de los Pueblos Indígenas y Tribales, que será mencionado recurrentemente a lo largo de este material.

Por lo demás, este material podrá ser continuamente renovado a partir de las nuevas dudas y casos que los propios beneficiarios planteen.

# KAPITURU A'NARA

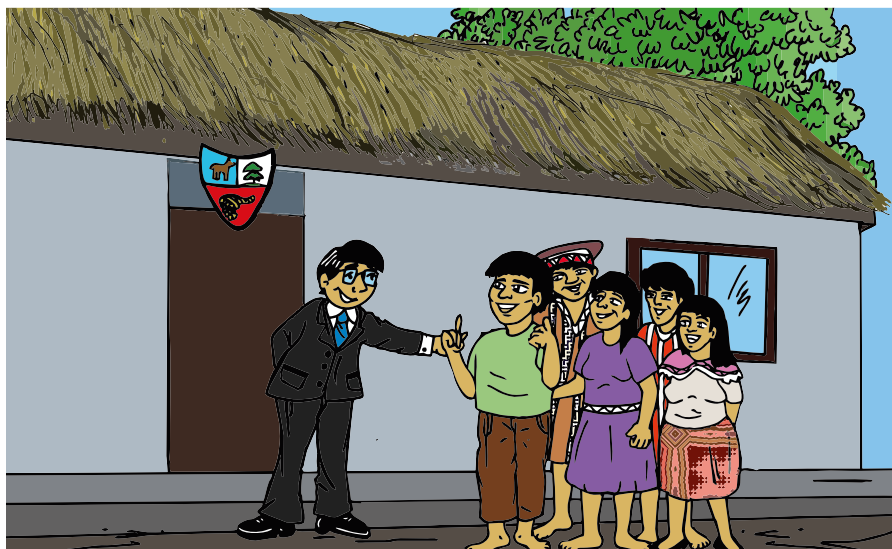
¿Unpuinta nihkakasu ma'sha nuya  
nihkakamare?

Ihsu kapituruke kenanapun unpu nihkakamasuna, ma'suna nihpun Istatu keterinkensu, a' nutarinkensu Tirihchunen pa'puyakamasu, ku kamamarahchinwe wamirianenmarenta inaran ninanua'wamarenta insesuna ya'weran.

Panka nanan a'nataweri ya'wetupachinken, unpuinna a'nawitapuchin, inauchachin kemanta nihke. Nihpunawe nihtuhtapun ma'suna nihkakamasu inake iterinensu, Suntaru, Wise, ku nihpun Apukatu itupisu.

Nuya nituhtakasu, aya'panpachinen, awatunen pe'sha, pe'sha itupachinen, ku nuwantapiranwe uhshake ahtatuwachinen, wamirianen, tehpapachina ina piyapi tahshinan peike na'kun pi'i pa'sarin, ku kirihka anuyahchahtasuiwewa'anu'sa, ina piyapi mahkapuna, nanan anuyahtakaiware, pihpipun ku nihpun ku pihpiarinwe.

Nahpatun ku nunpin tinunsiatapunwe, ama kemaurachachin niana'intakamarewe, **tuhpinakeran** apaweretupachinen, kemahsaa'tahshinan peitupachinen nunpinansumare.





# 1.1 Piyapi acha´erinsu

## ¿Ma´ta ina hábeas Corpus itupi?

Putiri Utislar nahtanesu a´na piyapi acha´ehkamareama ana´intakaisumarewe, ku ahkete tewenrinsumarewe.



Ihsupuchin a´nataweri ya´wepachina:

- A´na piyapi manin suntaruri ku na´kun tewepirinwe, ku kunawe nihsarin ni´tun, ku Wise manta tuhpirinwe.
- A´na kanpu piyapi tahshinan peitupachina, ku peinen na´kun taweri wanitupachinwe.
- A´na piyapi ama itakaimarewe sha´wichinake, nihtuhtakasu ku interanta itapunpuwawe sha´wichinake unpuransu, teweransu. Nituhtakasu ma´ta tenin Ley nihka: Ta´teke, ama nunkesu ma´shamaresu kepapachinen, nanan kaniamasu ya´werin

- A´na piyapi ayapachina, inake Istatu ku pa´yahtaupachinwe, ina nihkamare

Inamaresu ku Apukatu nuwanterewe, nuya kanpuranta nihkakasu.

Ihseke a´nutarinen, nuwiteke unpuinketa inpuchin nahtanteresu nihkamasu ya´werin:

### **A´nataweri ku yunkiahsewe ma´sha pahsarewasu:**

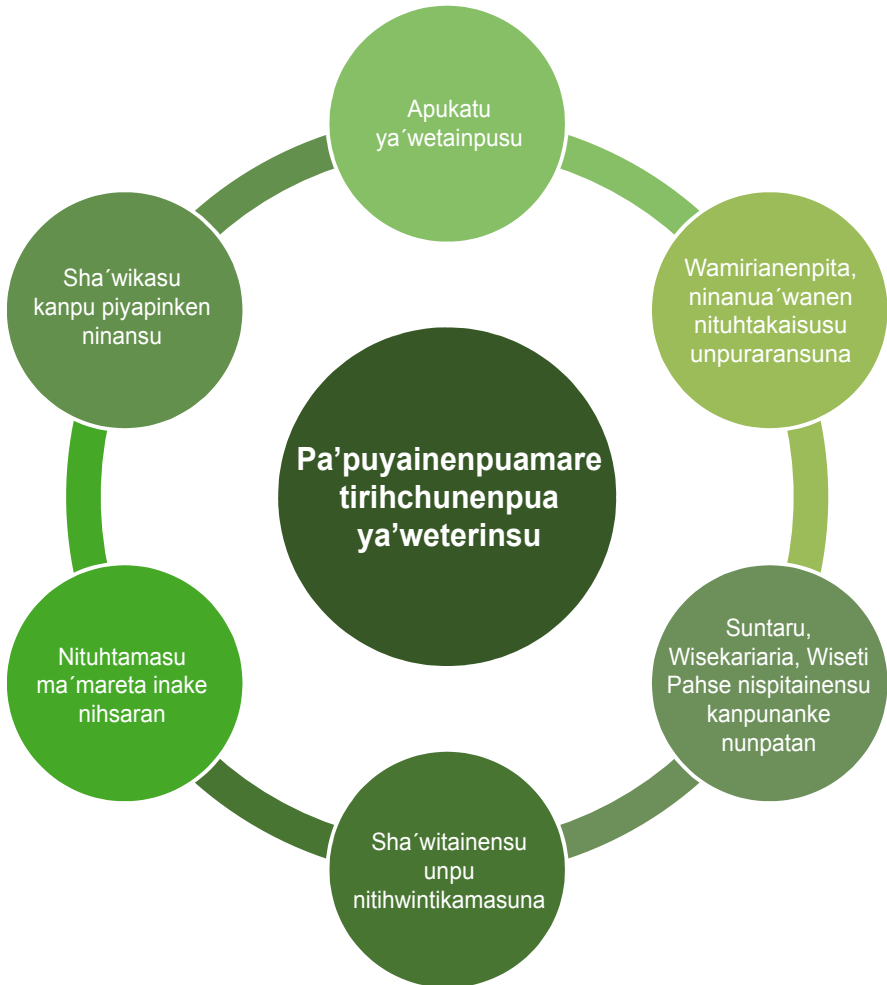
**Mauru i´wa simana na´werinke suntaruri manin, ku mahku ina piyapi tuhpirinawe tuhkumintu ku ichi iraterinwe ni´tun**

Mauru pihta pihkeran pakasu suntaruri manin, mahsawatun keparin Kumisariya´pa, ku tuhkumintu ichi iraterinwe ni´tun, nimara kahtu taweri nihsasu ayaterinsu ni´tun.

Suntaru tenin ihesu piyapi ku nininen ya´weterinwe RINIKE, ina yunihtakaimare inake nihpun kenantakaiware tuhkumintunen. Nahpatun ihesu piyapi tuhpinan nahtanatarai tuhkumintunen.

Ina piyapi ku na´kuntewerinwe, nituhtakasu, inake Wiseti Pahse a´naruahchin tehkapun ihesu piyapi uhkuwiku inshateranta we´in acha´ehki´in.

# ¿Insuwitanta nihka tirihchunen ya´weterinken inake acha´erinkensu?



Nahpumantarawatun nituhteke ihstu:

- Ina acha´einensu inake nanitere nihkaku nishihpinan ku nihpun nanankeransa, ina wa´anu´ sake itawisu: Wiseti Pahse.
- Suntaru naniterin mahkainensu, ya´wepachin nuninsu Wiseti Pahse, nimara ma´sha teweraran kenanpachinen, kenayatupachinen nahpuruware nanitupi mahkainensu.

## ¿Ma sahkatauta nihka nihkapun ina acha´erinensu taweri?

Nahpuru taweri piyapi inaura niacha´ehkasumare, ku nihpun a´nawitamare ihsupuchin nituhtakasu inapuchin nihkamare:

Suntaruri mahpachin ku inkariteranta mahku ina piyapi ituwirinawe mahpachina, ku ma´sha tewerarin kenanpirinawe mahpachina, ku nihpun ma´sha nahpunin nihsahpirinwe kenayatatuna mahpachina, inautatuna kepawachina, tahshinan peike ina piyapi inake ihsupuchin nihpun. Ku nihpun Apukatu nahtanakasumare unpu unpuatunsuna nanan anuyahtakasumare.

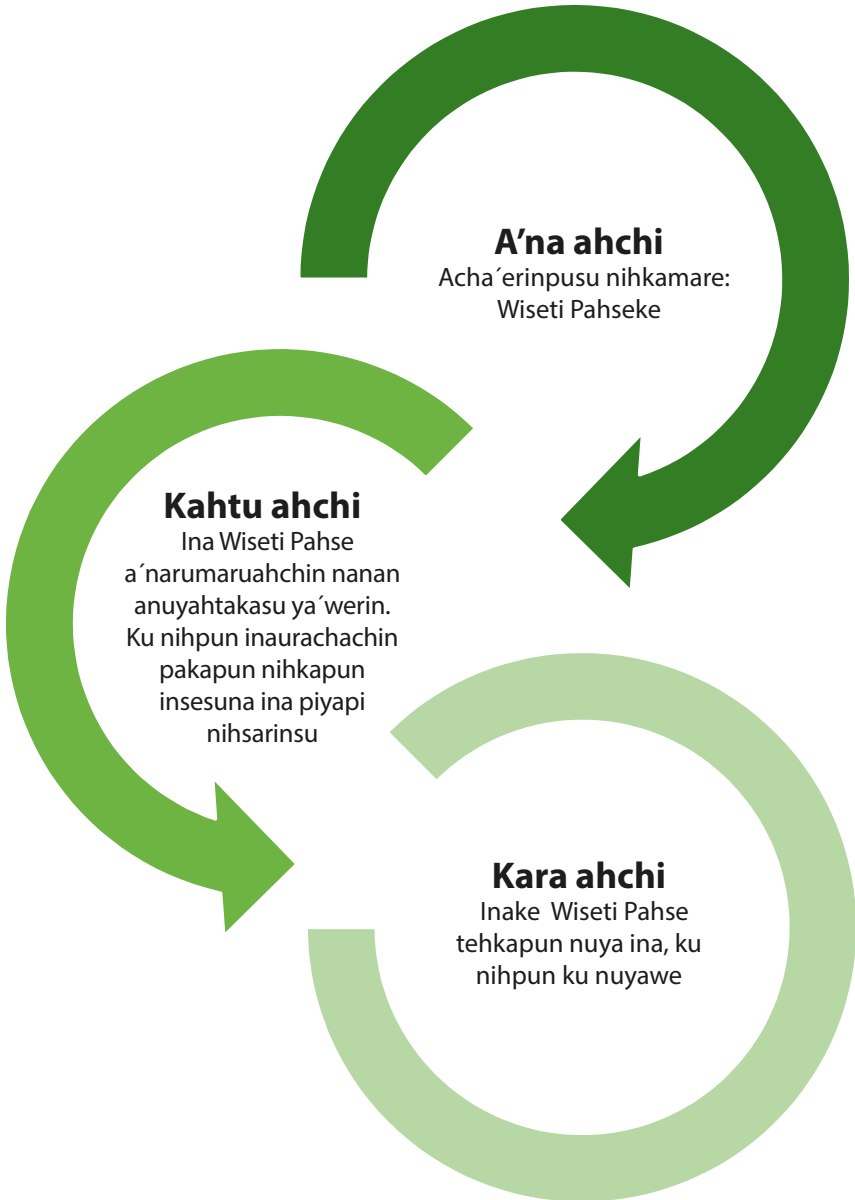
Wa´anu´sa ketakamare nanan nuyah intitikaimare unpu nanpirewasuna, unpu ya´werewasuna, ma´pitata nahterewasu kanpuasu ninanua´wanenpuake kanpu piyawinpua, nahpapunawe yunkikasu nihkamare ina piyapi inauchin mahpisumare.

Nuyahsha sha´witakamare Wa´anu´sa ina kirihkake nishihkaimare, nihsapike akukai-mare ku inaurinpuchinwe, nihkakamare, ina piyapi mahpiké, ku nihpun tahshinan peitupi. Inamare imahkasu Mauru nitupisupuchin. ¿Unpuahsuta mahpisu? ¿Ma´marechachinta Suntarurisu manin nihka?



# ¿Insuta inakirihka nine acha´erinpusu nihkacamare?

Unpukasuna ina ihseke a´nutaranken:



## 1.2 Nahtanteresu pa' puyainenpumare, ka'tanainenpumare



14

### ¿Ma'ta ina garantías?

Wa'anú sake nahtateresu pa' puyainenmare, ka'tanainenpumare nanpiresumare, ya'weransumare, inshateranta ku nuyaweitupachinkera, ya tehpapachinken inawa pa'puyainpusumare naputerinenpusumare kema tiriychu ya'weterinkensu nanpikasumare.

lhperasu a'nuchinkema unpurusuna ina nahtantapumapa' puyainemasu, ka'tanainemasu:

## **A´nataweri ma´sha pahsarewasu:**

Nuwise nani taweri Kuansha nu´wirahrin, nani nu´wirinke tehparranken iterin. Naputerin pihkeran, nani tahshi, nani tahshi Nuwihsesu Kuansha painenke paatun Kuansha weehshasu yah ninarin tehpakamare. Nahpumantarawatun a´nataweri nani kahtu, kahturuawerin ku Kuanshari tewetupirinwe. Inake aweatun iterin a´nataweri kankan yunkiraran, a´nataweri kankan chinutaran iterin. Naputuwachina Kuanshasu Nuwiseri na´kun yunkirin, yunkirawatun tenin makena teweterawepera kasu Nuwise pera, tehawatun yunkipirinwe ku ya´werinwe teweterinsu, ku nu´tenwe, ku unpuuteranta Nuwisere ni teweterinsu ya´werinwe.

## **¿Ma tirihchuta, ina nahtantarinsu pa´puyakaimare ya´weterin?**

Ina piyapi nahtantarinsu pa´puyakaimare ya´weterin tirihchu a´narumaruahchin ahtintikaisu, nuya ya´wekamare, nuya nanopitakamare ya´werinke, ma´sharu´santa ya´weterinsumare.

## **¿Ma sahkatuta nihka nihkapun ina piyapi pa´puyakaisumare, ka´tanakaisumare nahtantarinsu?**

Ina piyapi nahtantapun pa´puyakaisumare, ka´tanakaisumarete-wenchachin inapuchin nanan nihpachin. Ku nahtantapun-wepa´puyakaisumare, ka´tanakaisumareku nanan ya´wepirinwe, inaukasu ku nuyawe. Kunanan tuhpinan uhkuwikamarerahchinwe insuaresuna ninu´wiatuna, niaweatuna ya´werinsumarerahchin ina nihkapun.

## ¿Insuta ina kirihkanine nahtantakamare pa´puyainenpusumare, ka´tanakainenpusumare?

Unpukasuma ina a´nutarankema:





## 1.3 Tuhkumintumare kirihka anuyahteresu



### ¿Ma'ta ina DNI?

Ina tuhkumintu itupisu, inare'kenpua naniterewa nia'nukamare, Wa'anu'sake, inake nanitere Tirihchunenpun apa'takasumare, nahpumantarawatun suhwerakamarenta wa'anenpua wayunamare Istatumare.

Nituhtawa ku tirihchunenpua inakerahchin ya'werinwe, ku'sunta tuhkumintu ya'wetuwirinpuawe tirihchunenpuasu na'kun, na'kun pa'terin, na'kun, na'kun pariterin. Nihpunawe na'kunkenpuwa piruanunpua ni'tun ina tuhkumintu ya'weterinpua ninuwitakamare ihesu Istatuke ya'werewasupita.

## ¿Unpuruta Tuhkumintumaresu kirihka anuyahtariwa nihka?

A'narumaruahchin, nani shunka puhsa pi'i ya'wetupachinpua. Nihpirinwe ihpera tinpuru'sakesu ya'yuwi wa'wahsharu'santa nani wa'watupachinara, wi'napi'santa ya'wetupi. Inawanta nitututapaimare unpu ya'wetakaisuna taweri we'ninke.

Inpitasuna ku ya'wetupisupitawe uhkuwikaisu ya'werin. Nani ya'wetupisuwitasu inawanta nihkakaisu ma taweriru'sakesuna minserarinsu, pa'terinsu taweri ina tuhkumintukechachin nishipi nihkaku, ama ku'wanayakasumarewe. Ina aya'werekasu, a'na nahshauhkuwikasu ya'werin.

Ina kirihka anuyahtere RINIKE. Nahpumantarawatun inawanta na'kun sahkatupi ninanua'waru'sake, ya'yuhpi piyapiru'sa tuhkumintuwankaisumare.

18

Na'kun Munisiyuru'sa kirihka anuyahtupi RINIRE, a'naruahchin ninanua'waru'sakenta piyapiru'sa tuhkumintu uhkuwikaisumare.

## ¿Unpureta Wa'anu'sake ku tuhkumintuwanpaterawe nihka?

Nanan panka ya'wetupachinpura, ku nuwancharapiranwe uhshake ahtatuwachinen, wamirianen teh pawachina, aweatunen pa'panpa'pan itupachinen, iwapachinen, nara ku kirihka anuyahtapunarawe mahsapachina, inake tewetapachinen, nimara piyapi acha'ekasumare ku nihpun nahtantakamare pa'puyainensumare, ku tuhkumintuwanesumare inapuchin yunihpun a'na piyapi tuhkumintuwan nininsu ina kahtawainkensumare.

Nihpunawe kanpunta manutaku tuhkumintu uhkuwikasu a'narumaruahchin.

Ina tinunsiataransu ina piyapi kahtawararinkensu ina tehkapun ina piyapi ya nunin nu'tehken, inamare ma'sha tuhkumintuteranta a'nukamasu ya'werin, a). Partitanen, b). Ninanua'wa ninenin ya'weransuke, c). Ku nihpun karini de saru itupisu, ku nihpun kirihka istutiransu ya'weterinkensu inawita ya'werenamen.

**Nihsha timanta itupisu,ihsupuchin:** Sa'anpure'kenpu nite'yatakamare, sanapiru'santa su'inare nite'yatakaisumare, kusharumare nihpun, ma'shasu nahtantamare nihpun, inake a'na piyapi nuya inaura nihkapun, ku nihpun Apukatunen kihkapun. Ina nihkasu, kemasu tuhkumintunen manutapun. Inake apukatunen tehkapun ihu tirihsu nishihtupisu artikuru 81°, Kutiku Purisisar Sipiri inakeinapuchin nanan nishipisu ya'werin tehkapun.

Tistikus ya nihpatan, ku nihpun ya sha'wipatan, a'nuke a'na tuhkumintu, inake tehke ku kahu tuhkumintuwankuwe, ni'tun nuwanterawe kahtawainakusu. Nahpapunawe a'nahken tuhkuminturu'sa a'nuran ninanua'wawa'an keterinkensu, ku nihpun a'na wa'anu'sateranta keterinkensu, ihsupita: Ikihsia keterinkensu pautihsaransu, partitanen, ku nihpun carini de saru inawita.

## ¿Ma tirihsuta tuhkumintu nahtantarinsu ya'weterin?

Ya'ipinpua Piruanunpua sanapiru'sa, kemapiru'sa tirihsu ya'weterin tuhkumintuwankaisu ya'werin, inachin kanpu piyapinpuwanta tirihsu ya'weterinpua.

Ni a'nukamare, sha'wikamare intuwaranta kemasu, inake tehkamake kanpu piyapinken ku nihpun pewenanken inamare ina. Unpacha'pin, ku inaputaunenpuawe nihka, kanpuasu kanpu piyapinpua a'nahkenpua ku tuhkumintu nitu ya'weterinpuawe ni'tun.

## ¿Ma sahkatauta nihkakaisu nihka tuhkumintuwanu'sa ya'weterin?

Nani piyapiru'sa nituhtapun ihstu:

Nia'nukapun, a'nupun  
wa'anu'sari nahtanpachin.

Kirihka amanutapun tuhku-  
mintunen a'narumaruahchin  
ya'wetainkesumare, inau-  
chachin wi'namamarenta,  
wa'wamamarenta inawanta  
ya'wetakamare kemapuchin.

Yunkikasu, yunihkasu, ketantaka-  
su wa'anu'sake nahtantakasu:  
Nimara Ninanua'wanenke, Muni-  
sihpiuke ku nihpun RINIKE. Na-  
nisu nitihkipachin tuhkumintunen  
taweri akutupisu manutakasu,  
a'na nahsha aya'werekasumare  
a'narumaruahchin



## 1.4 Aweatunaaya´mupisu, aya´panpisu, pe´sha, pe´sha itupisu



### ¿Ma´ta lesiones itupi?

A´na piyapi awepisu, inake nuwantasu aweatunape´sha, pe´sha itupisuaya´mupisu, aya´panpisu, pa´panpisu, ina naputupi.

lhseke a´nutarinen pu´piyan ku nihpun panka lesiones itupisu.

## A´nataweri ma´sha pahsarewasu:

A´na ninanua´wake nani pihta ta´wanterasu, Kuansha Piturure ninu´rapikeran nimahpisu nuwanta niaweatuna, inake Kuanshasu chini, chinihken ni´tun Piturusu minsepi, inake pe´sha, pe´sha iterin Kuanshari.

Ina niinautupachinara ninanua´wari anuyahtakamare yunkirin, ina ku nuyawe nipu´tupisu, inake yunihtakaimare inseranta ina kañaririn ina niawekaisu, nihpirinwe Piturusu na´kun ku nuyawe nitupi ni´tun ku inake anuyahtakasu yunkirin. Istatuke wa´anu´sake pakakasu yunkirin. Nihpirinwe ninanua´wasu ku nuwanterinwe inake Pituru pakakasu, inasu ninanua´wake anuyahtakasu nuya tuhpi.

Inake Pituru pa´nin tinunsiatapun, timantatapun, nihpirinwe wa´anu´sari itupi ku naniteraiwe ina nihka´waisu, inasu Ninanua´wake nani anuyahchihtunwe, kanpita unpu ya´weramasuna, unpu nanpiramasuna ni´sawatuma nani anuyahchihtumawe.

Nihpirinwe Pituru apukatunene tenin, ya´weterin tirichu ahtintineinensu, tenin nahtanawatun Piturusu tenin: Kahchachin nunsarawe inauterinku aweatunaku, pe´sha, pe´sha iterinku ni´tun, napurarawe. Nahpumantarawatun tirichu yaweterinku nuya sha´witainkenmasu ihsusu inauterinku, ihesu pu´terinku ku wasu ihpera tinpu nanpiraisu, ku ihpera ya´weraichachinwe, irahka tinpu ni inauterai, ihpesu ku ni inauteraiwe ninanua´wake insesuna ya´weraike.

## ¿Aweatunen pe´sha, pe´sha, itupachinenen, aya´mupachinen, aya´panpachinen, pa´panpachinen insuta inamare tirihchuru´sa ya´weterinken?

Ihsunta nitutamasu:

### Nuya nanpikasu

Ya´yuwi kanpu piyapiru´santa ya´weterin tirihchunen nuya nanpikasu, nuya nanpikasu. Ina tehkapun tehsarin ku nanitupiwe wa´anu´sari pu´piyanteranta se´wakaisuwe, ku nihpun a´nawitari.

### Inakechachin nanan anuyahtakasu

Naniterin nuwantakasu inake nanan anuyahtakasu. Nuya ikin nahtanpirinwe, nihpunawe nihkapuna ku ahkete ku´chahchin nihkakasu ina awepisu ya´werin ina pe´sha pe´sha itupisu

### Tinunsiatamasu ya´werin

Istaturi a´paikasu, pa´puyakasu ya´werin kanpu piyapi. Nihpunawe a´nataweri ninanua´awa wa´ani, ku nihpun, Istatuke sahkaterinsuari a´wepachin, nu´wipachin, inake nanitere tinunsiakasu, timantakasu timantakasu Punisiake ku nihpun Wisekareke ya´werin.

- Wa'anu'sa Istatuke sahkatupisu, inapuchin kanpu piyapi nitupachina nihkakaisu, ahtintikaisu a'narumaruahchin Nuhtururi tantiakamare, inake nispitapun unpuwinta ina kanpu piyapi nanpirinsu, unpuwinta ina kanpu piyapi ya'werinsu, ku nanitapuwen uhseretakaisu ina.
- Inake Suntaru, Wiskaria, Wisi inawari nihkapuna nuya tantiyakaimare, inake nihkapuna unpurusuna inautupisu, inaran unpurusuna ya'kunin tantiyakaimare inauchin nitapuna kanpu piyapi ahkeran we'ninsu ninanua'wakeran.
- Inake kanpu piyapi nunsawachin nahtanakaisu Wa'anu'sari ya'werin, unpu kañaririnsuna ina inautupisu.
- Inake wa'an tinunsia ketapisu, sha'witupachina inake ina wa'an nihkakasu Nuhtururichachin ina kanpu piyapi nuya ahtintikaimare, nuya inapuchinsu nihkakasu nihpachin.
- Inake nanan anuyahtakasu ina wa'an nanan anuyahtuna'pi nininsu, nituhtakasu unpuinta ya'wepisu kanpu piyapi'sasu, unpuinkenta nanpipi inawasu ya'wepike.
- Inake wa'anu'sa nihkapuna tinunsiatuna'pi, inaran tinunsiarapisunta ina ninanua'wakeranahchin nihpachina, inauchin nihpachin inake nihkakaisu nanan anuyahtakasumare nininsu ihsupuchin: Unpuinta inawasu ya'wepi ninanua'wanennake, unpu nanpitupisuna, inaran ni'sapikera, nihkapuna Ley Istatuken ya'werinsu, inake, nahpuinachin nanan nuya nihkakamare.



## ¿Insuwitata ina sahkatunihkapun aweatunen pe´sha, pe´sha, itupachinenen, aya´mupachinen, aya´panpachinen, pa´panpachinen?

Piyapiaweatuna inaputupachina tinunsiatarinsu nituhtakasu ihsupuchin  
nihkakasu ya´werin:

Istatu wa´anu´sari perahpachin paatun  
nanan anayahtakasu nihpachin,  
pakasu nani taweri perahpiké ya´werin.

Tantiyapiké kahtawatakasu ya´werin.

Nu´tehken sha´wikasu ya´werin.

Nunpinpachinsu inarichachin  
anuyahtakasu ya´werin.

Yunkikasu, nituhtakasu ina awerinsuari  
na´kun, na´kun ku nuyawe, wewewiru  
nitupachin, insuarisuna inauterin awea-  
tun ina tewenchachin pa´sarin tahshi-  
nan peike.



## ¿Unpu nineta kirihkape´sha, pe´sha, itupachinenen, aya´mupachinen, aya´panpachinen, pa´panpachinen?

Ihseke a´nuchinkein unpu nihkakamasunaina kirihka:

### **A´na ahchi**

Ina Kanpu  
piyapi,  
ninanua´wake  
ya´werinsu  
awepisu,  
tinunsiaterin,  
wa´anu´sake.



### **Kahtu ahchi**

Inake Wisekareri  
nuya nahtantapun  
inautupisu,  
nahpuruchachin,  
itapun nuhturu  
ina piyapi  
tantiyake  
inautupisu  
nituhtakakamare.



### **Kara ahchi**

Ina Wisekareri  
ina piyapi  
awetuna´pi  
sha´wirapiapun,  
inapuchin nuya  
tuhpachin.



### **Kara ahchi**

Wiseri  
sintinsiapun ku  
anuyahtupachinarawe,  
inake sintinsiapisu  
nahtahtapun  
anuyahtakasu,  
inauchachin  
Wisikarenta.



### **A´naterahpu ahchi**

Ina imakaru  
nihpachin  
Wise, inake  
tinunsiatuna´pi,  
tinunsiapisunta  
itapuna imapui  
ina nanan.



### **Sauhta ahchi**

Inake Wiseri  
nihkapun inari  
anuyahtapun  
ku nihpun  
ninanua´wake  
ina nanan  
anuyahtapuna.

## 1.5 Sanapiru'sa, wa'waru'sa, sanapia'waru'sa ninanua'wake ku nuyawe ya'wepisu



27

### ¿Ma'ta ina violencia sanapi'samare, wa'waru'samare, sanapia'waru'samare naputupi?

Ku nuyawe nani taweri sanapiru'sa, wa'washaru'sa, sanapia'waru'sa ninanua'wake ya'wepisu. Nimara aweanarechachin ichin ya'werinsu su'ini, pa'pinkeran, a'shinkeran, ku nihpiun insuarisuna ichiya'werinsuari. Ihsupita ina nuya nituhtakasu ama a'natawerin ya'werewake tewekasumarewe:

Awana, ana'interinensu narake, sinturunke awerinensu, ihsuyatarawe yaita'parinensu, nuhkaninensu, yanpirinensu, tehpararanken iterinensu. Inapita ina(violencia Familiar itupi, peinenpuke nahpunin ichiya'werinensu, peinenke, ku nihpun a'na parihti pa'nanke nahpunin niterinensu, ku ya'wererankenachin inautupachinen inachin yunkiapunwe. Nahpuruchachin kankan yunkikamasu ya'werin.

Ihseke a´nutarainke inapuchin nhpisu, inauchin nanpiwisu:

### **A´nataweri inauchin nihpisu, ma´sha pahsarinsu:**

A´na kanpu ninanua´wake a´na piyapi, nani taweri sa´in awea-  
tun ya´werin, inautatun nani taweri awerahrin, inauterinke nuhka-  
nin, yanpirin, ku sa´inahchin inauterinwen, wi´ninpitarechachin,  
a´nara kemapia´wawa ina iskun pi´i ya´weterin, inaran a´na  
sanapia´wasu shunka a´na pi´i ya´weterin. Ina wa´waru´sa  
na´kun te´wapi pa´pin inaupachina. Ina pa´pini ku kenanseya-  
rinwe wi´ninpita aweapun, kuunta nu´pipirinwenta, ahketeterin  
nu´piwachinasu. Nahpatun ina sanapi a´na sanapi´sari inake  
ya´wepisuari penenpi unpukasuna ina su´ini inautahrinkeya.  
Nihpirinwe ina penenpirinawe sha´wirapikasu ninanua´wake,  
ku nihpun panka ninanu wa´anu´sake, Suntaruke, Wisikareke  
nihpun, nihpirinwe ku sha´wirapirinwe su´in te´watatun, na-  
hpapunawe chinihken kankantawatun tinunsiakasu yunkirin.

Inapuchin sa´ini sha´wirapichinachin ni´pachina, sa´in iterin  
a´nataweri sha´wirapipatanku ahkete awana kepararan, na-  
putawatun tenin, kema teweran ni´tun inauteranken ku nuyawe  
ma´sha ninan, ku wa´waru´sa nuya ni´nanwen ni´tun inaute-  
ranke.

# ¿Insuwitata ina tirihchunenpita pa´puyarinkenmasu ihsupuchin nanpipatamara ya´werin?

Nishike, nishikasu:

Tirihchu ya´weterin:  
Wamirianenpitari  
ka´tanamare ina tinunsia  
pu´mukasu wa´anu´sake  
inamarechachin nihpisu,  
ku nihpun ninanua´wa  
wa´anu´sake, inawa  
ri sha´witakaimare  
nishikaimare.

Tirihchu ni  
tihwintikasu:  
Sanapiru´sa, kemapia´wa,  
sanapia´waru´sa  
ninanua´wake ya´wepisupita  
a´na nituhtuna´piri  
pa´puyakasu inake  
nituhterinsu a´nukaru  
ya´werin.

**Sanapiru´sa,  
sanapia´waru´sa  
kemapia´waru´sa  
nahpunin  
ya´wepachina  
tirihchu  
ya´wetupisu**

Tirihchu wa´waru´sa  
ahtintikaisu:  
Wa´waru´sa nuntakaisu  
inawa intintipike,  
inawa nahtanpihsuke,  
nahpumantarawatun  
nuya nananke.

Ina wa´anu´sari  
ma´papun tinunsia, ku  
ahkete nihkapunaraiwe  
unpuinsuna nani taweri  
ya´werinsu.

Tirihchu sha´witakaisu:  
Wa´anu´sari sha´witakasu  
unpunta nihka ina  
nitinunsiawatera  
nahpuwinachin kankan  
yunkire.

Tirihchu ya´weterin  
nikachinikasu:  
Nuwitupachin ina nahpunin,  
ku nihpun uhsha itupisu, inake  
sanapi´ru´sa, kemapia´waru´sa,  
sanapia´waru´sa, inake ina  
nihpuna tinunsia. Naniterin  
Wisekari inarakeran  
uhkuwikasu. Ama ahkete  
tirihchunen ya´werinke  
tapitakaisumare.

¿Unpuaunta nihka, ina sanapi pa´pirinwe tinunsiatapun, nihpirinwe ku Kumihisariari nahtepachinwe? Tuhpinan itapuna ku ahkete ihsaruteranwe ina nihkatui nahteinkeinsu, nahpumantarawatun ku ahpira ahpira awerinenwe nihpera. Nihpunawe ina sanapi tehkapun, nahtekui Ley tenin ku inapuchin nihkawarewe tinunsiatakasu ya´werinwe. Inake ku nahtetupachinarawe ina sanapi sha´wikasu A´shimutenenkechachin ku nihpun Tiwinsuriake pakakasu.

## ¿Insupitata ina sahkatu nihkakasu inapuchin nanpispupita?

Inapuchin ya´wepisupita tinunsiatupachina ihsupuchin nihkapuna:

30



Istatu wa´anu´sari perahpachin pakasu nani taweri ya´werin.

Tantiyapike kahtawatakasu ya´werin.

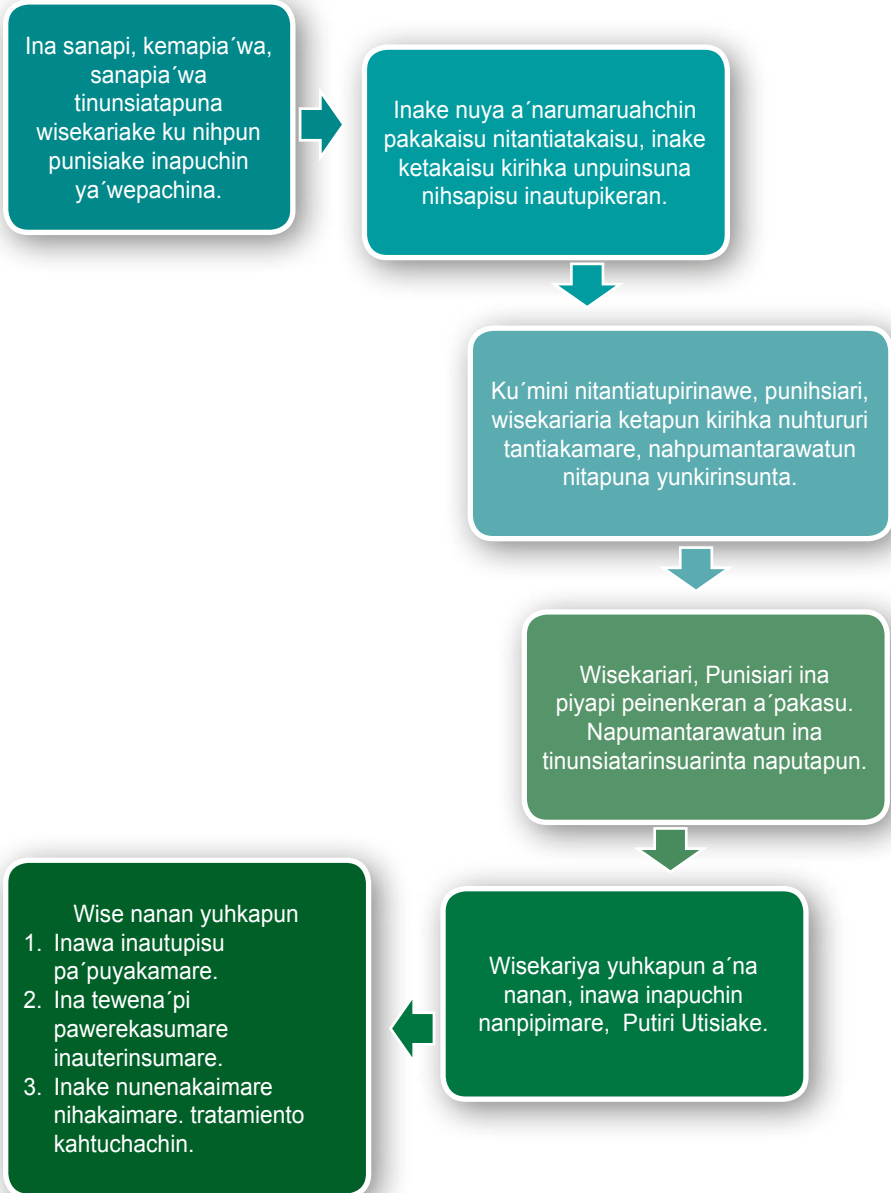
Nu´tehken sha´wikasu ya´werin, ku nunpinapunwe.

Nunpinachinsu inarichachin anuyahtakasu ya´werin.

Yunkikasu, nituhtakasu ina piyapi inapuchin nininsu pa´chihnachin tahshinan peike.

## ¿Insuta nihka, unpuinta nine tinunsiatakamare?

Ihseke a´nuchinkein unpu nihkamasuna ina tinunsia:



## 1.6 Uhshake ata'tupisu, ku nuwantapirinwe ku naniyahtarapirinwe pihihpinen



32

### ¿Ma'ta ina violación sexual? wa' washamare, sanapia' waru' samare, nanua' waru' samare, ku nuwantapirinwe ku naniyahtarapirinwe pihihpinen?

A'na mahshu sanapia'wa, nanua'wa, ku nihpun a'na paya munshiterinsu, ku nuwantapirinwe, ku nihpun anuwantapatun inuterinsu ina itupi violación sexual

Shunka kahtawini pi'i pihkeran violación itere, ku nuwantapirinwe ina nanua'wa, wi'napia'wa uhshake atahtupachinara.

Nahpumanrarawatun ihsupuchin tewetupisu a'na kemapia'wa, a'na sanapia wa, a'na nanua'wa, tuhpinan se'watupisu tahparunena.



Ihseke a´nutarainke inapuchin nihpisu:

### **A´nataweri ma´sha nihpisu, inapuchin pahsarinsu:**

A´na sanapia´wa shunka kahtu pi´i ya´weterinsu ninanua´wake a´nanaya ku yunkiasu ana piyapiri ina ninanua´wakeranchachin irake manin, munshitakamare, inake iterin pa´a inawa´a, itasu sanapia´wasu ta´amara.

Inari inauterinsu ahpimiahchini, a´shin yu´in, ina sanapia´wa nuyah nuwiterin mahshuri, wa´waterinkeraware, nuhya ya´wepirinawe uhshine.

Ina nanuna´wasu pa´pin, a´shin sha´witerin. Nahpuwachina inawasu nihkeramapi. Inasu naputupachinara ina nuwanterin ni´tun inauterawe, ku ihperahchin inauterawe nani sa´awepuchin nitahrawe.

Ina nanua´wa pa´pinpitari tinunsiakasu nihpirinwe ana´intakaimare, nahpapunawe inasu tenin ama nihkusu ina, taweri piritiahpuma inamare, nimara ya´werewakesu, nanpi-rewakesu inapuchin nanua´waru´sa uhsha nuyah nituhtunpi tenin.

# ¿Insuwitata ina tirihchunenpa ' puyarinkensu ku nuwantapirawen inauterinensumare?

Tinunsiatakasu:  
Ina inaitupachina punisiake, ku nihpun wisereke. Nahpumantarawatun naniterin a 'nawitanta tinunsiatakaisu.

Apukatu ya 'wetakasu:  
Inari tiwintikamare. Ku pa 'tuwinanwe. Inari nihkamare ina sanapia 'wa, kemapia 'wa, kemapia 'wa, sanapia 'wa nihpachin, sanapiri, kemapia 'wa kemapiri ahtintiapun.

Ya 'wetakisu a 'nari nuninsu sha 'wikasu, ku tuhpinan nuninsu sha 'wikamare nimara nahtanakamare nuninsunta.

Nuya ni 'puna ina nanan nihsapisu. Wa 'anu 'sa nuya nihpuna, ama inakake, wa 'washa akanuhtakaisumarewe.

**Tirihchu ya 'wetupisu ku nuwantapirinawe inautupachinara**

Tirihchu ya 'weterin wa 'anu 'sari akachinikaisu: Ama akehte inautakaimarewe. Ina sahkatu nihpuna puteri Utisiar wisekariare.

Nahpupinahchin nihkakakasu inawanta. Ina Wa 'anu 'sa nihkapuna unpu ya 'weterewasuna, unpu nanpiterewasuna kanpuasu. Ama wa 'yantakaisumare, ku nuhkanainenpuasumare yawerewake Ninanua 'waru 'sake. Wa 'anu 'sa nuyahsha nahtantapun ina violación nitupisu a 'nanwanmateranta. Ina wa 'anu 'sa nihkapuna, ku 'mini inapuchinwe nanpiti, ya 'wepi irahkakeraraware Ninanua 'wake.

Tirihchu ya 'weterin ahtintikaisu:  
Inawachachin nihkakaisu ya 'wewikechachin. Nahpumantarawatun inawa nunpikechachin, inawarahchin, ama nunpisu nahtanakaisumare, Nuyanakechachin.

## ¿Insuwitata ina sahkatu nihpuna tinunsiatupike ku nuwantapirawen inautupachina?

Ina tinunsia nihsapatan ku nuwantapirawen inautupachinen ina nituhtakamasu ya´werin:

Istatu Wa´anu´sa iterinkensu imahke, unpuinsuna pa´puyamasu kemapia´wa, sanapia´wa inaran nani su´sua´warusanta.

Ku na´wekasuwe ahkete ina sahkatu nihsapisu inauchin nitupisu pa´puyakamare nuya imahkamare.

Nu´tehken sha´wikasu ya´werin unpunta kanpuasu ya´weterewa ninanua´wake, unpu pi´ihkeranta uhsha nuwitupi.

Nu´tehken sha´wikasu ya´werin unpunta kanpuasu ya´weterewa ninanua´wake, unpu pi´ihkeranta uhsha nuwitupi.



## ¿Insuta ina kirihka anuyahtapun tinunsiatupatan ku nuwantapirawen inautupachinen?

Ihseke a´nutarainke inapuchin nihkakamasu:

Nihsha piyapinta nuya tinunsiatupun ina pahsarinsumare wisekariake ku nihpun punisiake, inake sha´wipun ¿Unpuruta? ¿Unpuinta? ¿Awerin? ¿Tehpapunken iterin? Inapita sha´wipuna.



Ina kemapia´wa, sanapia´wa, su´sua´wa, Nuhtururi nihkapun, nuhshitapun, inaran sihkurukurinta.



Wisekereri itapun Wise, ina piyapi mahkakaimare, ama ta´akamarewe.



Inake sha´wikaisu ya´werin wa´a nu´sarín nahtanaimare.

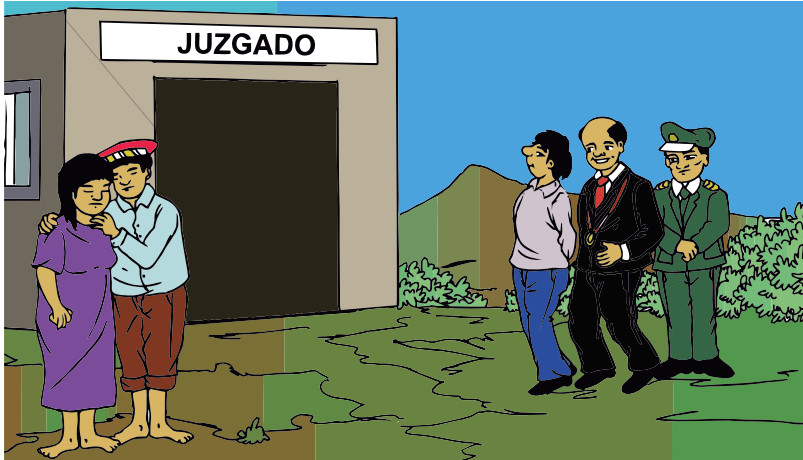


Wisekare, punisiare papuna nihkakaimare insehketa ina inauchin pahsarín.



Wisekereri tinunsiapun ina piyapi Putire utihiake, inake kañarítakamare ina nanan ya´werinsu.

## 1.7 Tehpaterinsu



### ¿Ma'ta ina homicidio itupi?

A'na piyapi, a'nari tehparinsu, ku yunkiahsuwe, naniterin tehpakasu piyapi.

37

### A'nataweri inapuchin pahsarinsu:

Shipahku kanpu piyapi ya'wewan, irahkakeraware ltekari ku nuyawe akurinu' pamare. Inari a'na piyapi'sa ayunkirin nu'panen uhseretakaimare nahpumantarawatun wi'ninpita nu'witerin, ku nuyawe pu'terin, ku nunte-rinwe, inapihkeran nunapirin tañu nihkaimare, tehpakaimare.

Nahpatun Shipahkuri itapun: lteka pihpikike ihsekeran, ku pihpiwataun tehpararanken iterin. Nihpirinwe ltekasu ku pihpikasu yunkirin ya'weterin tirihchu ya'wekasu Ninanua'wake ni'tun, nihpirinwe a'nataweri inari teh-papachin wamirianenpita parihsitapun. Ina ni naputupisu Ninanua'wake nuyah nituhtupi.

Kahtu taweri na'kurinke ltekasu chimipi kenanapi. Nahpatun sa'in, iinpita-su tuhpi: Kun inkariteranta pa'puyapiwe teh-papi kiyasu iyawei, inake tuhpi ku inkari tehparinwe Shipakuri tehparin tuhpi.

## ¿Insuwitata ina tirihchu ya´weterinpu kirihka nihkamare nihka teh pawisumare?

### Tirihchu ya´weterin nanpikasu:

Tirihchu Istatumare, Ninanua´wamarenta tehpatakasu nahpa ku nuyawe. Nahpatun tehpatuwatera ana´interinenpu.

Istatumare piyapi teh paterinsu tahshinanpeiterin na´kun pi´imare, ina piyapi teh papisu inari ku tananpiterinwe ni´tun nuyaran nanpikasu ina piyapi. Nahpumantarawatun ku nuya ya´weterewe, ama ina ahkete tehpatakaisumarewe inapuchin Istatu ninin. Nahpumantarawatun Istatu yunkirin nanpiresu na´kun pa´terin, nahpatun ana´intakasu yunkirin inapuchin nihpisupita.

## ¿Insuwitata ina tirihchu ya´weterinpu kirihka nihkamare nihka teh pawisumare?

### Nanpiwisuchachin ni´ sawatuna anuyahtakaisu:

Inapuchin ya´werinmare nanan wa´an iratakasu Wisikariyake tinunsiatamare, inamare niwentunapuna kirihkaturu´sa, inkarina ni´nin inawa sha´wikasupuchin nihkaimare. Inake Wisekare apa´tapun ina kirihka ni´ sawatun unpuinsuna kanpu piyapi´sasú ya´wepi, unpuinsuna nanpiipi (Inawara, inakechachin nanan anuyahtaupisu) inake ina Wa´an nunapun nu´tehken.

## ¿Insuwitata ina sahkatu nihpuna wamirianenpita ina teh pawimare?

Ina piyapi tinunsiatarinsu ihsupuchin nihkaku sahkatu ina teh pawimare:

Kahtawakasu ina nihpike sahkatu nahtantupike wa'anu'sa, nituhtakaimare unpu tehparinsuna.

Ni tuhtakasu ina chimipi yanua'awa, yahcha'awa tehsapachina inake nihkamare, nituhtakamare. Inake yunkikamare nuya inautakaisu, ku nuyawe nihpun, inamare nuntapun wa'anu'sa Istatuke sahkakupisu.

Inake nuya sha'witakasu, wa'anu'sa, nuya yuhkaku nanan, unpu ya'weterewasuna, unpu nanpiterewasuna kanpuwasu ya'werewake, inauchin nitehpanntuatewara nisha, nihsha ninanua'ru'sake.



## ¿Insuta ina karihka ninesu anuyahtakamare ina piyapi teh pawimare?

Ihseke a' nutarainke inapuchin nihkamasu:

Tinunsiateke wisekariake ku nihpun punisiake. Ni'ke modelo 5.



Inake nuhtururi nihkamasu, inake mini chimipi, yanukaisu, ku nihpun yachapuna. Nihkamasu a'na pagina'pa pagina'pa.



Wisekarerinunsiapun Putire Utisiake ina tehpatuna'pi, ya'wetupachin na'kun sha'wirapiisu.



Inake wisekaria nahtantapun ina tehpatuninsu. 'nahpuru ninanua'wa wa'an tehkapun kanta kahtawainken wisekare.



Inake wisekarerialayatupachin ina ninanua'wake ya'werinsu ina tehpatupachin, wisekare tehkapun ma'mareta ina piyapi usekapun.



Inake wa'an puteri utisiare nuya yunkirawatun usekapuna ina tehpatuna'pi.



## 1.8 Chimipi yanupisu, yahchapisu



### ¿Ma' ta ina necropsia itupi?

Chimipi Nutururi ni'ninsu, inake tantiarin. Inake nanitupi yanukaisu, yahchakaisu, tantiakaimare, nihkakaimare, unpu chiminterinsuna, makarisuna tehparin, inkarita nihka tehparin.

Ihseke a´nutarainke inapuchin nihkamasu.

### **A´nataweri inapuchin pahsarinsu:**

A´na Ninanua´wake kenanpi Wirian teh papisu iyunsanke. Inake nitupi nuhtuwaru ihsaruterinsu, inautawatuna kuhsera´watupi. Ina Ninaua´wake yunkipi ina unpu chiminterinsuna, inkarisuna tehparin.

Ina wamirianenpita tuhpi: Nuhsa irahka sa´ini inari atehpatuhchinachin, ina sanapi a´nariteranta ayunkirin inapuchin nihkakasu. Nahpatun ina wamirianenpita yunkipi tinunsiakaisu Wisekariake, nahtantakaimare, nituhtakaimare insuarisuna tehparin ina piyapi Istaturi ana´intakamare.

Inake Wa´anu´sari wamirianenpita iterin: Ina chimipi yanupuna, yahchapuna nahpatun yunkipi tinunsiatapuna ku nihpun tinunsiatapunawe.

# ¿Insupitata tirihchu ya´werin ina wamiriaru´sa ku nihpun Ninanua´wa ina chimipi yahchakaimare, yanukaimare?



## ¿Unpureta chimipi yanupui, yahchapui tehsawachinara?

Insuna nuwanterinsu nunkakasu ina chimipi yahchaáwa, yanua´awa tehsapachinara inamare nituhtakasu: Unpuruta, unpu nihkapunta.

Yunkire tinunsiatakasu tehpaterinmare, inara kañaritere nahtantakasu, unpu nininta, inta ina tehpatura´pi.



Wisekaresu tenin nani kañaritarewa ni´tun ihisu chimipi YANUTEWA nia´awa.



Chimipi wamirianenpita ku nihpun ninanua´wa wa´an chinihken nanan yunkapun inapuchin yunkipachin wiseresu, ku kiyasu chimipi YANUTUI ya´werauwe, Ninanua´wanuike.



Inake wisekareri itapun wamirianenpita, Wa´an ina sahatu imahkasu ahketeware pankatarin ku YANUPATEWAWE, KU YAHCHAPTEWAWE ina chimipi.



Wisekare yunihpun a´na piyapi Antropologo itupisu ina sha´wikasumare unpunta kanpu piyapi´sasú ya´wepi, unpunta inawasu nanpipi ya´wepike.



Inake Wisekare tehkapun ku inautupirinawenta nuya imakasu tinunsiakasu tehpatura´pi.

## 1.9 Munshiwānpisu



### ¿Ma´ta ina adulterio itupi?

45

Munshiwānpisu kemapi ru´sa, sa´in ya´wetapunarawe, ku nihpun sanapiru´santa su´ina ya´wetapunaraiwe inapuchin nihpisu, ina itere adulterio.

Ihseke a´nutarainke ina nihpisu:

### A´nataweri inapuchin pahsarinsu:

Nuwise Nuhsare niinautupisu a´na Ninanua´wake ya´wepi. Kara pi´i na´werin nisaáhtupisu, inara ni mahpikera kahtu wa´washa ya´wetupi. Nihpirinwe, Nuwihsesu sa´in tewananpitahrin a´na sanpire ina ninen Maria.

## ¿Insupitata tirihchu ya´werin ina kirihka nimanesu sa´anpure´kenpu tapikamare?

46



Nuyah yunkirawate, nuyah ni´sawate:

Ama tewetekesuwe munshiwanshipu a´na sa´antarinsu ku kirihka tapipunawe, inaukasusu panka na´in. Ina nuyah nimahpirinawe, a´na ina aipi sa´antarinsu ikirihsiakechachin, munisihpiukechachin.

Inasu kahtu partitapuchin nihsha, nihsha ya´weterinpuchin.

# ¿Insupitata nihkapun insusuna ina kirihka tapikasu yunkipachin, tewanapiterin ni'tun?

Intana nuwanterin tapikasu ina nimahpisu nituhtapun, nuwitapun ihsupita:

Ina kirihka ku tapiyahtasewe, nituhtakasu, anuyahtakasu wi'nanpuwitamare, wa'wanpuwitamare, ¿Inta paweretapun inawa nuya ya'wekaisumare?, ¿Ineta ya'weapunasu?

Nuya yunkirawate, un'tehken nunkakasu ya'werin

Nuya yunkirawate sha'witakasu Wise, unpuinta Ninanua'wakesu ya'werewasu sa'anpure'kenpu, sanapire'kenpu, nitewananpituwatera unpuresuta. Inake Wise nihkapun nahpuinachin un'tehken nihkakasu nunsaresu nite'yatakamare.



## ¿Ma'ta nine nihka nimanesu tapikamare?

1

Kemapi ku nihpun sanapi timantatapun putire utisiake

inari nite'yatarama itakamare.

2

Insusuna timantarapisu inanta a'panitapun, inake

Wiseri perahpun, inakeanuyahtakamareku nihpun tapichinakamare

3

Inake tewenchachin nihpachinsu, Wiseri nishipun inaurapisu, inake tehkapun

ihperasu nani nite'yaterama.

## 1.10 Nara na 'kun uhkuwipisu

### ¿Ma'ta ina tala ilegal itupi?



Ihsupuchin nihpisu, a'na, ku nihpun na'ayapi nara a'neatuna mahpisu ku inkariteranta ketupirinwe, ku nihpun mahke itupi pihkeran, Ina mahkaimare nara rintiru na'wetawatun na'kunkeware a'nawitanken nihpirinwe a'neatuna na'kun nara ku inahkeware mahke itupirinawe mahpi.

Ihseke a'nutarainke inapuchin nihpisu:



## A´nataweri inapuchin pahsarinsu:

Ana Ninanua´wa Kuru itupike, piyapi´sa ya´ipi Ninanua´wachachin niwentunawatuna inake yunkikai-mare unpu anuyahtakaisuna panka nanan ya´wetupisu nu´panena. Shunka kahtu piyapi´sa a´naparihtikeran we´sawatuna inawa nu´panenake ya´weituna nara mahkaimare. Inaupachina Wa´ani Ninanua´wake ya werinsuri ya´winkaku ku Ninanua´wa nahtanamawe itupirinwe, inawasu tuhpi: Wa´anu´sa nara ni´na´piru´sa keterinkui ya´kunatui sahkata´uimare, nahpumantarawatun ihisu nu´pa´ ya´yuwimare tuhpi.

Napupachinara wa´anu´sasunuya nahtantupirinawe inaketupisu kirihka Wa´anu´sa nara ni´na´piru´sari sahkatkaisu, ku un´panenakenmare ketupi, nahpumantarawatun, nani kirihka ketupisu nani taweri ketupisu ta´wanterin.

## ¿Insupitata ina tiriychu ina naramare ya'werin?

### Tiriychu nu'panena a'paikaisu:

Nituhtakasu istaturinta ketupirinwe sahkatakaisu, nanitupi ninanua'a nahtanakaisu ya'werin, inawa nuwantupachina nahpuruware nanitapuna sahkatakaisu, inawa nu'panenake nihpachin.

### Tiriychu nara uhkuwirapimare

### Tiriychu nara uhkuwikaimare:

Ihsu sahkatu nara uhkuwikaisu ya'werin kirihkake nishipisu, Ley ya'werin inarin kahtawarinsu, nihpunawe, ina uhkuwipisu nihpun Piruanuru'sanken, inawamare nihpun, nihpunawe ama ku'chahchin ihsuru'te tapiapunawe, ku tapikaisu ya'werin.

## ¿Insupitata ina sahatu nihkaku tinunsiatereke nara uhkuwirapachinara ku kirihkawan nihpachina?

Intana tinunsiatasku nu'panenmare ku nihpun ni ya'karirinsuare nu'panen ihu nituhtasku:



Kahtawatakasu, sha'wikasu ya'upi ni'ninsu ina nihsapisu inake.

Ahkete nahtanterarapun nanisu tinunsiapachina.

Perahkasu Wa'anusa ina nara uhkuwiatuna nahpunin nitapisu piyapi'sa.

## ¿Unpukasuta kanpu Ninanua'wake inapuchin nara uhkuwirapachina ku kirihka ya'wetupirinawe?

51

Pakasku nihkamare, nuntakamare wa'ani ina uwihisina pa'puyarinsu piyapi'sa Ninanua'waru'sa, inaran Ministeriu ustisia'pa, inake yunkikaimare unpukaisuna.



Inaketimnatakasu kahtawakaimare Ninanua'wa nimara Ley ya'werin ninanua'waru'samare ni'tun.



Ku'su nahtetupachinawe, sha'wikasu Tihwinsuria, inaran sha'wikasu Ministeriustisia'pa.



Sha'wikakamare ina wa'anusa nara pa'puyana'piru'sa pakatuna inawachachin nihkakaimare.



Inake nahtantakasu tapikaimare ina kirihka ku nuyawe nihpisu ketakaimare, inaputatuna tehpapunapuchin nitapi kanpu Ninanua'wa.



Inake timnatakasu inake nihkakaimare ina kirihka na'kun nihpisu ku sha'wiaunarawe, tewepi na'kunNinanua'wa tirhchu ya'wetupirinwe, kahtawakaisu nihpirinwe.

## 1.11 Sha´ witerinpusu ya´ipi

### ¿UNPU TINUNSIATAKASUTA NIHKA A´NA KANPU PIYAPI KU NUYAWE NITAPACHINA?

Timantata mare a´na Wiseke ku Istatukenwe nininsu, inakesu nuwantere Apukatu, ina a´chintainpusumare unpukasumarena. Ina Kanpu piyapi naniterin pakakasu insutana Tiwihtirinpusu a´ninkechachin, ina paapakasu ya´werin.

Tinunsiakasu punihsiake ina kanpu piyapi naniterin nihkakasu inaurachachin, nahpapunawe, Apukaturi kahtawarawachinsu ina nuya, nuya.

Inake nuwantuchinapun Tuhkumintunen, ku ya´wetupachinwe, nihkakasu ya´nan nuninsu ihstu kirihkake ina nanan.

52

### ¿INSEHKETA KENANAPU KIRIHKARU´SA INA TINUNSIATA´U MARE?

Ya´nan kirihkaru´sa ya´weterinkensu inawita nuwantapun (Kunteratu, karehta, tinunsiaru´sa inawita), nahpatun nuyahsha akuke, nuyahsha tahpake, unpurukerawareta nininsu nuyahsha akura´piake. Inawita nuyahsha tahpake. Nahpumantarawatun uhkuwike na´kun kuhpia.

Ku ya´weterinkesupitahsu paatun nahtanke ina Istatu uwhisinake, inake a´nataweri pawerekeran uhkuwipun pankukeran, kuhpia risurusion nu´tehken nininsupita Putire Uhtisiakeran, nacimintunen, ku nihpun nisa´ahtupisu RINIKE kenanapun inapita.

Nahpumanatarawatun a´nahken kirihkaru´sa a´nawitake ya´werin. Inapuchinta ya´wechinku tuhpatan Apukaturi inasu nahtanpun Wise, tuhpinamare ku ketarinkenwe. Nanisu ya´wetupachinken inake ni´ke ma taweriketa pihpirin ina kirihka, ma´ta tenin inake nuninsu.

## ¿UNPURUTA TIMANTATERE LEY TENINCHACHIN?

Timantatamare Ley teninchachin nuwantere Apukatu. Inake kanpu piyapi Apukaturi kahtawakamare. Inake naniterin pa'puyakamare Ninanua'wa nu'panen, nuya nu'pa ya'weterinsu ihesu ru'te.

Ina pa'puyakamare nuya ya'wekamare, ya'werin nihkakasu Ley teninchachin a'na pa'puyainpusu inachi itupi: Hábeas Corpus. Inake ku nuwanterewe Apukatu, ina kenamariwa a'na kirihka wentunu'sake.

## ¿UNPU NITIWINTIAPUNTA INA KANPU PIYAPI TINUNSIAWACHINA?

Timantawachinen yunihkamasu Apukatu nuya nitihwih intikamare.

Nuya ina timantawisu Kanpu piyapi wamirianeni, ku nihpun Ninanua'wari kahtawakasu, a'narumarachin Apukatunen yunihkamare, ku nihpun Ninanua'wa Wa'anuarinta kahtawapun ya'werin.

Inake, ku Ninanua'wari kahtawapachinwe, ku wamirianenpitariteranta, ku inmare ta'tahpunwe imahkasu ina tinunsiasu.

## ¿INKARITA KAHTAWAPUN NINANUA'WASU, KANPU PIYAPINTA?

Tihwinsa Puperikari: Inari kahtawapun ihswitake: Sipiri, sahtatumare, ana'inke nininsu inaran wamiriamarenta ina sahtatu nihpun tuhpina ku pawerewawen. Punihsiakeran, Wisekariakeran, ku nihpun Puteri Utisiakeran antawachinen yunihkamasu Apukatu nuya nitihwintikamare.

Ina Tihwinsa Puperikake ya'werin apukaturu'sa inake kahtawapisu kanpu piyapi'sa, ya'wetupi sahtatu ahtintikaisu inaurinke.

A'na Apukatu pawerekeran ina sahtatu nininsu yunihkaisu inake sahtakamare, inake ku sahkatahsuwe, yunkichinapuna unpusu pawere ma'patakasu, inake kahtawapun Ninanua'wa, Witirahsiun, inamare pawerekasu yuhki ta'wanterinke, ku nihpun yunkiapuna unpakasuna.



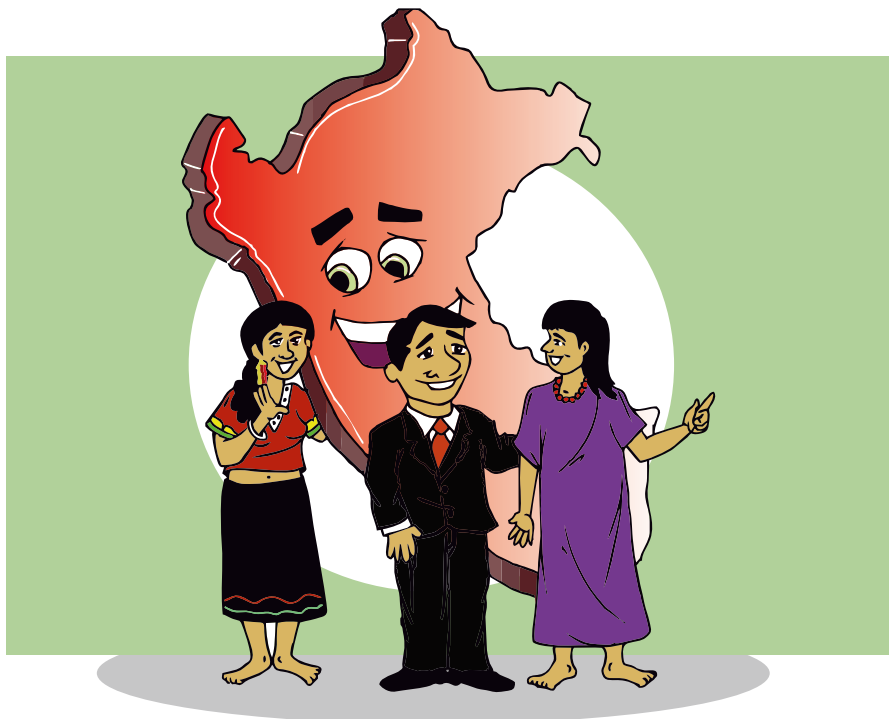
# KAPITURU KAHTU

ISTATU PIRUANU  
NINANUA 'WARU' SARE

Alhsu kapituruke kananapun nanan, ina kahtawaunken intintikamasu, ma'ta ina Istatu Piruanu, nahpumantarawatun, unpuinta Ninanua'waru'sa pu'terin, nanan ya'wetupachinara, ina ihisu un'tehken a'nutarinken, a'chintarinken kirihka.

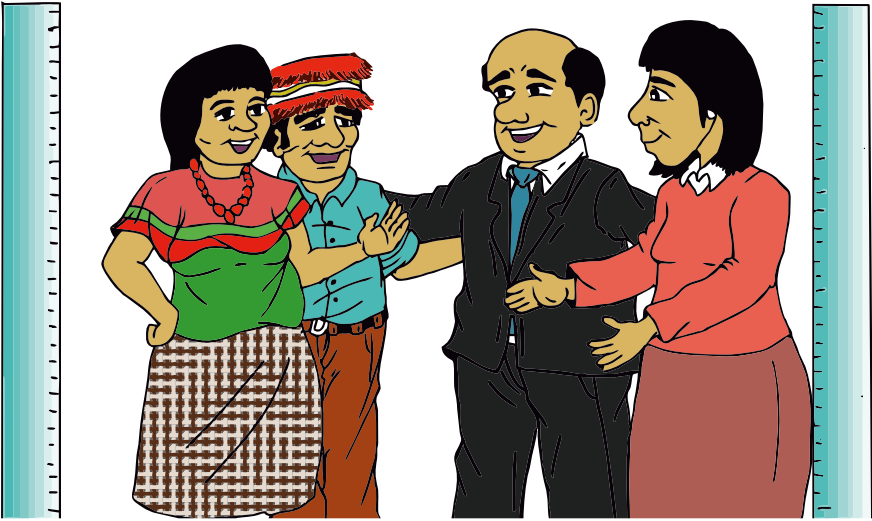
Ihsu kapituruke kañaririn Wa'anú'sa sha'wirapirin unpu sahkatakaisuna nanan anuhtakaimare ihisu Piruke, inake Ninanua'wa Wa'anú'santa marawirin, unpuinsutana Kuntitusiun Puritihka Pirunke artihkuru<sup>149</sup>tenin. Inaran sha'wirin insuwitata ina wa'anú'sa tewenchachin nu'tehken ustisia nihpisu Istatu kahtawapisupita inake.

Ahkecha ayunkiripu unpuinta pu'terin Istatu Piruanu piyapi'sa, inaran na'kun na'kun kanpu piyapi'sa Ninanua'wake ya'wepisupita.





## 2.1 Ustisia Piruke



### ¿Inpitata nihka Piruke ana´intapun?

57

Piruke ku Puteri Utisarisahchin ya´weterinwe ana´intaisu. Kuntitusiunke, inaran a´na ley, inaran Puteri Utisiachachin tenin uhkuwipi karihka inake tenin: A´nawita uwisinaru´santa nanitupi ana´intakaisu, ni´swatuna unpuinsuna ina nanan, inake nihkapuna nanitapuna ku nanitapuna nihpun.

Nahpatun Piruke nanitupi ana´intakaisu:

**Puteri Utisia:** Inasu Istatu Piruanunke, ina sahkatonen ana´intakasu. Inaran ya´wantarin kahtu: **Karihka nina´pi, karihka yu´na´pi,** inaran **Puteri Ikutipu** inasu, nina´pi, a´paina´pi, a´pituna´pi ninin. Nituhtakasu ihswitasu inawara sahkaturipi, karachachin nahpuwinahchin.

Ihsw Puteri Utisiake ya´werin nisha, nihsha ana´inu´sa, inaran Tiripunari itupisu inake anuyahtupisu nihsha, nihsha nanan (Tahshinanpeimare,

Piyapiru'samare, wamiriamare, na'kun ya'werinsupita), nahpumantarawatun ya'werin Nuyahsha ana'interinsu.

**Kanpu ninanua'waru'sa:** Artihkuru 149° Kuntitusiun Pirunke tenin: Akachinirin nu'panenkechachin, nanpiransuchachin, ya'weransuchachin, nanan anuyahtatun ku nihpun ana'intakasu nihpachin ana'intakasu ya'werin, tenin nunkapun.

### **Artihkuru 149°:**

#### **Sahkatakaisu ihtua, ihtuaru'teke, Kanpu Ninanua'waru'sake, Kanpisinuru'sake**

Wa'an Kanpisina'sa, inaran Wa'an Kanpu Ninanua'waru'sakenta ihtua, ihtuaru'te ya'wetupisu, nuya nanitupi sahkatakaisu, nanan anuyahtakaisu, ana'intakaisu, ina ya'wepikechachin, napurin a'na Tirihchuke kanpuamare ya'werinsu (**Derecho Consuetudinario** itupisu), nahpapunawe a'paikasu ama tewetakaimare **a'na tirihchu nuhya piyapi ya'weterinsu (Derechos fundamentales de la persona)**. Ley tenin: Ina Wa'anusa sahkatakaisu nuya ninnuntatuna a'nawita Wa'anusare: Usekatuti Pasere, inaran a'nawitanta ya'werinsu Puteri Utisiake.

**Kanpisina ninanua'waru'sake:** Artihkuru 149° Kuntitusiunke tenin: Akachinirin, ketarin chinirupi ana'intakaimare panka nanan ya'wepachin, tirihchunena ni'sawatuna, ya'wepikechachin.

**Runta kanpisina'sa:** Ihtua'ihtua'ru'teke **Puteri Utisiari** ni'sapisu, inapitari kirihkake nihsawatuna ketupi, **runta kanpisina'sa**.

Chinirupi ana'intakaisu nanan ya'wepachin, tirihchunena ni'sawatuna, ya'wepikechachin, nahpapunawe nihkakasu ama na'wehtakaisumare **a'na tirihchu nuhya piyapi ya'weterinsu (Derechos fundamentales de la persona itupisu)**, inake nuninsu. Ya'wepichi runta kanpisina'sa, nuyah ninirapiwisu unpu sahkatakaisumare, inauchachin kanpu Ninanua'waru'santa. Nihpirinwe ahnahkenu inawaraihchin sahkatakaisu yunkipi ya'wepike (**Autonomia itupisu**).

**Teripunar Kuntintusiunar itupisu:** Inachin Istatunken Puteri Utisiare sahkaterinsu, sahkaterin ana'inke, nanan ya'wepachina ana'intakamare, kahtawatakamare a'na nahtantupachin kahtawakaisu, nahpumantarawatun ley tapikamarenta, ku nuyawe nihpachin, chiunihken nihpachin, ku nuyawe piyapi'sa nitakasu nihpachin.

**Suhwerakaisu ni'ninsu:** Inanta Istatunkenchachin, inanta ni'nin, ku nuyawe inake nihpachina anuyahterin.

**Suntaru'sa Teripunanen:** Inawasu anuyahtupi ku nuyawe suntaru'sa nihpachinara, ta'apachinara sirpitapikeran, ta'ananpipachinara, wa'anu'sa wa'yantupachinara, narintupachinara, wanitupachinara inake, inawita ana'interin ku nihpun teyaterin, uhkuwimiatupi.

**Arpitoru'sa:** Inawasu ku akehte nanan nuyatupiwe, pu'piyan nanan anuyahtupi, nitewetupachinara kurihkiran, inmarera.

## ¿Inpitata ina Ustisia Piruke nihpi?



60

### ¿Inpitata ina Ustisia Pirukenihpi?

Sistema Ustisia Istatunken nininsu, ku uwisinaru'sake ya'wepisu nanan anuyahcupirahchinwe, ana'intupirahchinwe inake nihpi: Puteri Ustisia, Teripunar Kuntintusiunar, Suhwerakaisu ni'ninsu inaran Suntaru'sa Teripunanen, na'a ya'wepi, sahatu nihpisu a'nahken nahtantapisu ma'sha, tinunsiatapisu ku nihpun tihwihintirinsu, tashinan peike yunkiatapisu.

Ihsupitanta ya'werin:

- Punisia Nasionar pirunken.
- Ministeriu Ya'ipimare ku nihpun Wisekaria.
- Tihwihinsa Ya'ipimare ina Ministeriu Utisiakeran, inran
- Tirihchu ni'ninsu Piyapiru'samare.

## Utisia kahtupuchin ya´werinsu

### Utisia kanpunken- chachin nininsu

Ya´ipi Utisiake sahtatupisuwita nihkakaisu nuhya sahtatu, kunperi´ina ina kirihkake ya´werinsu, nishihtupisu, nahpapunawe nuyah ni´ sawatuna ninanua´waru´sa ya´wepisuchachin, nanpiwisuchachin nihpuna, ina tehkapun insetana inawa kanpu piyapi´sa ya´wepi.

Inapuchin sahtatate Ley nuninsuchachin kunperikasu nu´tehken, ina ni´newa ihseware. Nahpatun kanpupiyawipuwa, yunkikasu, nitutakasu, inaran itakasu wa´anu´sa kunperikaisu ya´werin; nuya a´pairawatuna tiriychu yawerinsu nuya nuya puchin nininsu kanpu piyapiru´samare, nimarawatun ni´puna unpuinta inawasu ya´wepi, unpuinta inawasu nanpiyi ya´wepike.

Ina nanan teninsu Intercultural, inari Istatu Wa´anu´sa kamairin Kanpu piyapi´sa nispiritakaimare nanpipihsu, ya´wepisu. Inawara nuya ya´wekaisu, kurihki yunihkaimare inaran sahtatupikeranta nuya nuya nihkatuna ya´wekaisu ya´wepike, inachi (Derecho Consuetudinario).

## 2.2 Istatu piruanuninanua´waru´ sare



62

Kañaritariwa, ihseke **KUNTINTUSIUN**, yunkirawatewa, ina Ley tekenenchachin ninin Istatu Piruanu, inari nuyah nuwiterin tiri hchu kanpu piyapi´sa ya´weterinsu.

**Ina KUNTINTUSIUN** tenin, artikuru 51°, ina pe´nacha ahketeware Ley ya´werin, inawanta nuyah nuwiterin ina tiri hchu kanpu piyapi´sa Ninanua´waru´santa ya´weterinsu.

Kuntintunsiunkechi nunin ihsupuchin, Istatusu **partisihpakasu, ni´nin ya´yuhpiachachin nuya ya´wekaisu, ku a´naihchin marewe.**

# Ihsupuchin Istatu Piruanusu



A partisiparinpu karihka nihpachina, ma Ufिकासु akukasu yunkipacchina, inake ya´ipi piyapi´sa partisihpapi, kanpupiyapi´ru´santa.

Ku nuwanterinwe inkariteranta apirinwe ma´sha nininke.

Ku naniterewe a´na inapuchinpuchin Kupirinu ya´wekasu.

ku A´naihchinmarewe sahkaterin, nuwanterin ya´yuhpia piyapi´sa kahpah kankantakaisu, ya´yuhpia ketakasu ma´sha ya´werin.



## Ma' marechachinta Istatu Piruanu sahkatarin

Ma' marechachinta Istatu Piruanu sahkatarin: **Piyapi, nitihwihtikamare, inaran nispitakaimare nanpirinsu, ya' werinsu** nahpatun Istatu Piruanu inapuchin sahkatarinIna tenin: Kuntintusiunke, artihkuru 1°.

Nahpaware ya'ipi piyapi' sa sahkatapisu Istatuke (Wiseru' sa, Wiskaru' sa, Punisiaru' sa, Pa' puyateru' sa, inapwita), kunperikaisu kirihka nuninchachin ya' yuhpi Piruanuru' samare, Kanpu piyapiru' samarenta.

### Ma' marechachinta Istatu Piruanu sahkatarin

Nihkaku piyapi' sa tirihchu ya' wetupisu: Nanpikaisu, sanu nihkaku, nu' panena nuya nihkaisu, ku te' wawinanwe pakakaisu, inari pa' kuwitatupuchin nihkapun.

Ya'ipi piyapi' sa sahkatapisu Istatuke yunihkapuna nuya ya' wekaimare ya' yuhpia Piruanuru' sa ku' un nihpirinwenta kanpu piyapi' sa.

Ya' yuhpia Tirihchu kanpu piyapinken nininsu ina' tun ketantapun Istatu.

Nispitapuna unpuinsuna nininsu ina Kanpu piyapi, a' murinsu, nuninsu, unpu ya' werinsuna, nanpirinsunta, ma' sharu' sa nahterinsu, inawatun nuyahpiachin ya' werinsu ina itere: **Identidad cultural.**





## 2.3 Unpu nihkakaisuna utisia Istatu Piruanu Kanpu Ninanua'waru'sake



### Ma sahkata nihinpi:

Istatu Piruanu  
kuperirin kara  
chinhken  
sahkatu

Puteri Iikutipu, inasu sahkatenen, nina'pi,  
a'paiatun, nihkakasu Kupirinu sahkata,  
inachachin pa'nin Rikiun Kupirinu'sakenta,  
inananMunihsipiurusakenta.

Kirihka nina'pi, kirihka yu'na'pi, ina ley nina'pi,  
inachi ina Kunkerisu Ripuperihka.

Puteri Utisia: Inasu sahkatenen, anuyahtakasu  
nanan, ku nihpun ana'intakasu.



## Istatu piruanu sahaturu 'sa:

**Sahkatu,  
chindirupi,  
sahkatupike  
ku akete  
na 'wekaisuwe**

Piyapi'sa sahatapisu Istatumare piruanumare, inake kunperikaisu kirihka nuninchachin ya 'yuhpi piruanuru'samare, kanpu piyapiru'samarenta.

Ya'ipi inake sahatapisu ya 'wetupi chindirupi.

Artihkuru 45° Kuntintusiun teninchi, inake sahatapisuwita ya 'wetupi chindirupi Istaturi keterinsu, nahpapunawe ku na 'wepunwe inaupachin ina anutarin, nahpatun ku tewetapunwe ina chindirupi ya 'weterinsu. Ihsu nuninsuya'ipimare inake sahatapisu.

Utisiake sahatapisu, ya 'wetupi ina nihkakaisu, kunperikaisu kanpu Ninanua 'waru'sake, ama na 'wekaimarewe ina kirihka nuninsu.

## Punisia Nasiunar Pirunke



### Sahkatu, Punisia Pirunken nininsu

Ma'mareta, ma'ta unpuwisuta Punisia Nasiunar Pirunken, ina kenanariwa artihkuru 166°Kuntintusiunke.

Punisia ya'weterin sahkatu: Nihkaku nuyahsha nihkaku piyapi'sa insesuna nihsarinke, ni'sarinke, nih'kapun ya'yuhpia Ley kunperikaimare, Istatu nu'pa a'paikamare, kapua nu'panta nihkapun.

Nahpumantarawatun pa'puyapun, kahtawapun ya'ipi piyapi'sa Ninanua'waru'santa. A tananpitapun, pu'wanakeran nihkapun, nahtantapun ayatapun piyapi'sa ku nuyawenanpipisu.

67

## Ministiriya'ipi piyapiru'samare

### Sahkatu, nininsu Ministiriya'ipi piyapiru'samare

Nuwitariwa nimantarin Wisekaria ma sahkata nhipisu kenanariwa artihkuru 150°Kuntintusiunke.

Wisikaru'sasu ni'pi nu'tehken nihkaku, nitakaisu ya'ipiyamare, inamare nuya nahtantapun, ma'suna unpuwisu, tewepisu.

Nahpumantarawatun ku inahsahchinnihkapunwe, nimantarawatun nihkapun wamiriasa ni tewetupisu, inake tuhpinan nanan yuhkapun unpuanyahtakasuta Wise.



## Puteri Utisiare



Puteri Utisiare, inasu inake kara Puteriru'sake ya'werinsu, nahpuinanschin Kupirinure (Puteri Ikutipu), Kunkerisure (Kiriha nina'pi), Puteri Utisiar inawitare anuyahtupi nanan, nahtanpachinara, Minitiriu Ya'ipimare, ina kenanariwa artihkuru 138° Kuntintusiunkeran.

### Puteri Utisiare Sahkatu, nininsu

Panka nanan, ina kañariterin nitewetupisukeran, inake nanitere ley pu'mukasu. Nahpumantarawatun ninin wamiriru'sanitetupisu: Kusharumare, wa'washamare, nu'pamare, sahkatumare anawitantaku nanan anuyahtupisuwe inake nuwantupi inkariteranta kahtawakaisu.

Puteri Utisiarke ya'werin ihsupita: Wisiti Pahse, Wiseti pahse letrados, Wisiti Pahse especializados (Inake ni'pisu un'pamare, tahshinapeitupimare, Ley nuninchachin inapita), Wisi Mixtu itupisu (Na'kun nanan ni'ninsu), WisiSuperiores (Tistituru'sake), WiseSuperimu (Nima wenseterinsu).

68

## Utisiati Pahse

### Wiseti pahse

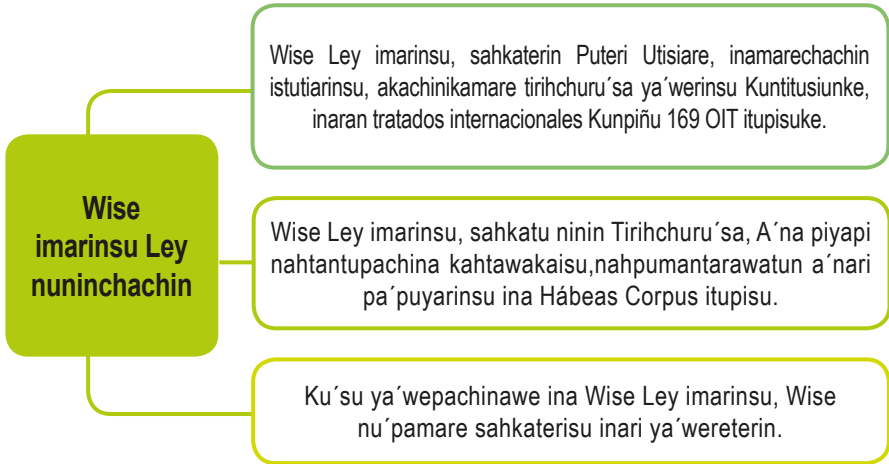
Wiseti Pahse, sahkaterin Puteri Utisiare, inake sahkatumare ku nuwanterewe Apukatu nihkakasu.

Wiseti Pahse, anuwantantarin, unpuwinsuna ya'wepisu, nanpipisu ina ni'sawatun inake nanan anuyahterin insesuna inachin nihpisu.

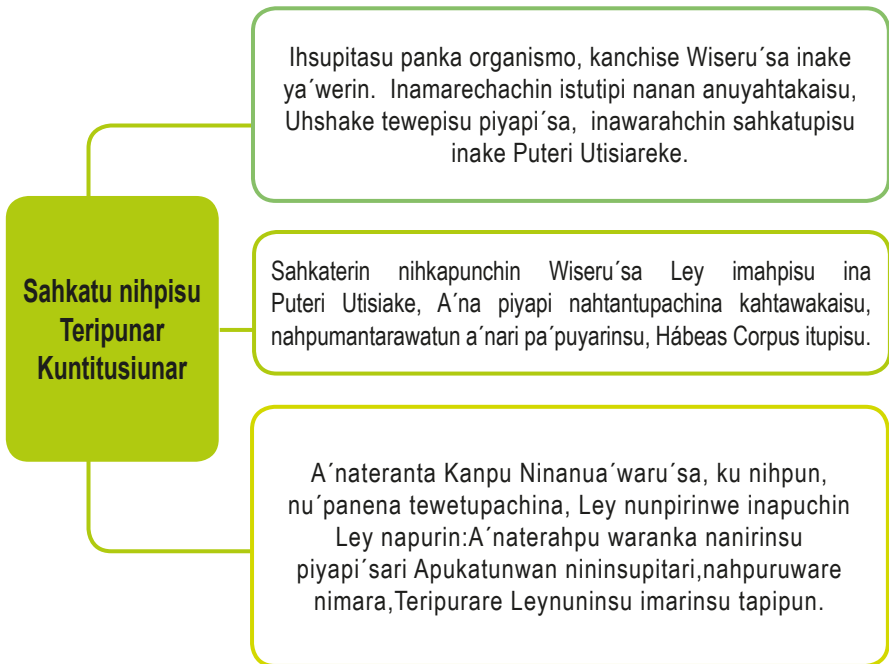


Ina Wiseti Pahse, Kanpu piyapi nihpachin, anuwantantarin, inau anuyahterin, inawa ya'wepisu, nanpipisu, insetana ya'wepisuni'sawatun anuyahterin.

## Wise Ley imarinsu



## Teripunar Ley imapisu



## Tiwihsa Ya'ipimare

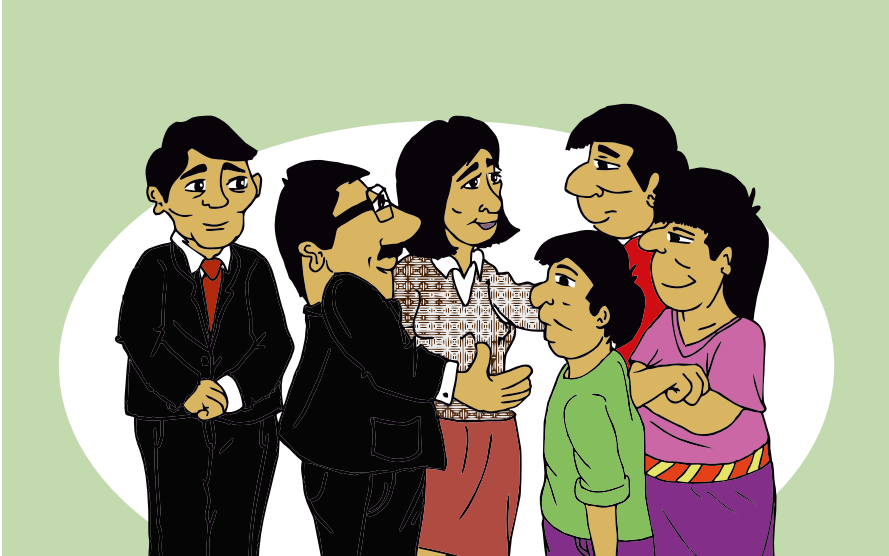


Tiwihsa ya'yupimare, inawasu sahkakupi Ministiriu Utihsiake, inaran Tirihsu Piyapi'sanken mare, ina mahtupi Putiri Ikuteke. Ya'wetupi sahkatu nihpisu Piyapi'sa kahtawarinsu nihwihtikaimare inake.

Inake a'chinin, kahtawaterin nihkaku: Kusharumare, nu'pamare, sahkatumare, inake tihwintirin piyapi'sa ku na'kun tewetupisutirihchunen.

InaTiwihsaya'ipimare, naniyunkirinTiwihsuru'saya'wetkasu inamarechachin nihpisu Kanpu ninanua'waru'samare sahkatakasu.

## 2.4 Wa'anu'sa piyapiru'samare ninanua'waru'samare sahkatu ya'wetupisu nihkakaisu



**Sahkatu nihpisu, wa'anu'sa sha'wipisu intuaransuna we'sapisu**

Ya'ipi wa'anu'sa sha'wipuna intuaranta we'saransu. Inake a'nukapuna kirihka ya'wetupisu Ihtaturi. Nininen, ma karukuta ya'weterinsu inake ya'weapun. Ina nahtanpachina a'nahkeni ina a'nupuna.

**Nuyahsha ninuntupisu**

Ya'yuhpia wa'anu'sa Istatunken nihpisu, nuyahsha ninuntapun ninanua'wa wa'anu'sare, inawanta nituhtakaisu inta ina nanan anuyahtapun, inawatuna ina saahkatu nihsapisu, tirihchu pa'puyakaisu.

**Anuhterinenpuchin-  
nininsu**

Ya'ipi Wa'anusa anuhtepuchin nitapun kanpu piyapisa, nuwitakaimare tirihchunena, ina nanan anuyahtupike ku nihpun inapuchinta nihpirinwe, Ina wa'anusa kunperikaisu ya'werin, inake nihkapuna unpuaunata sahtatupike: kachinitakaisu, sha'wirapikaisu, Tiwihtikaisu ku ana'intakaisu nihpun.

**Ya'werinsuchachin,  
nanpirinsuchichin  
nihpun ma'sha**

Ya'ipi wa'anusa kunperikaisu ya'werin Ley teninsu ihisu tratados internacionales Kunpiñu 169 OIT itupisuke, Declaraciones nininsu, inaran Kuntitusiun Leyes Istatunke, inake nispitakaimare tirihchu ninanua'warusamare ya'werinsu, Istatu Ninanua'wa nahpuinanchin ninispitapuna nanpipisu.

**Sha'witeinenpusu  
nanan ya'werin**

Ya'ipi Wa'anusa a'narumarachin nihkapuna sahtatu ina kanpu piyapi pa'puyakamare, nahpumantarawatun sha'witapun unpu tinputa wa'kiapun ina nanan anuyahtakamare.

**Nuyahsha  
kepatupipuchin  
nininsu**

Puteri Utislar, nuyahsha, uhshahkeran sha'witapun kahtawakamare inake kanpu piyapi nanan ya'wetupisu. Puteri Utislar Tiwihtirinsu Ya'ipi, nuya atintikaisu, kepakasu ma'ta ina nihkapuna inake kanpu piyapi ahtintikaisu.



## 2.5 Wa'anú'sa na'kun nanan ya'wetupisu ku nu'tehken sahkatu nihpachinarawe



Wa'an Istatuke sahkatupisupita (Wise, Wisekaria, Tihwihtirinpusu ya'ipinpuu, Punisia nihpun) ku kunperipachinwe pakakasu a'nake sha'wirapikasu inari ana'intakaimare ku nihpun te'yatakaimare inakeran.

### ¿Unpuin nananketa?

Ihsupuchinke ku kunperiwachinawe, ihsupita Ina:

- Ku nuyawe pu'tupachin a'na Istatuke sah katerinsuari a'na kanpu piyapi.
- Na'kun, na'kun wa'kiwachinara a'na nanan anuhyaktakaisu
- Ku nispiatapachinawe ya'wepisuchachin nininsu, nanpiwisuchachin nihpisu: (A'muhpisu, nunpisu, unpuina nihpisu, nani ma'sha nahtepisu)
- Ku nauyawe sahkatawachina, na'kun iwatawachina.

## ¿Ma wa'anta inaurinsupita nihkapun nihka?

- Wiseru'sa ihsuari nihkapun: ODECMA itupisuari (Oficina Desconcentrada del Control de la Magistratura)
- Wisekaru'sa ihsuari nihkapun: Uwisina ni'ninsu inake Ministiriu ya'uwimare itupisuari.
- Punisiasu ihsuari nihkapun: Uwisina Inpituru itupisuari.
- Tiwihtupisu ya'ipi piyapi'sa: ihsuari nihkapun: Iwahturari itupisuari.

## ¿Unputapunata inautuwatewa nihka?

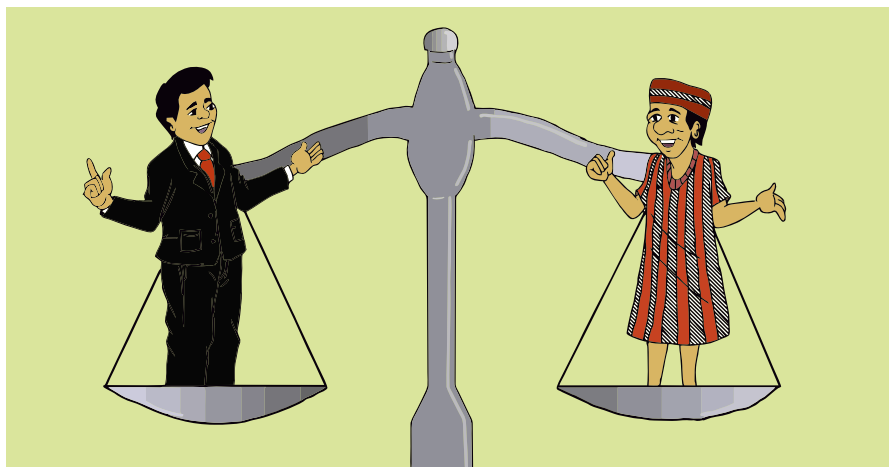
74

- Inake nihkapuna ya'werin kirihkake ina tewerinsu.
- Inautupatewa ku akehte inawapunwe.
- Inake ana'intapuna ku kunperipachinwe. Ku nihpun apaweretapuna, sahkatonen uhseretapuna, ku nihpun uhkuwichinapuna na'kun na'kun tewepachin.

# KAPITURU KARA

Piyapiru'sa, ninanua'waru'santa  
tirihchu, sahkatu ya'weterinsu,  
nihkakaisu

Ihsu kapituruke sha'wirin Tiriychu kanpu piyapiru'sa, kanpu sanapiru'sa, inaran Ninanua'waru'samarenta ma sahkatauta kunperipuna inapita ya'werinsu.



### 3.1 Sahkatu nihkakasu Istatu kanpu piyapiru'samare inaran ninanua'waru'samarenta

Ma'marechachinta Istatu Piruanu sahkatarin: **Piyapi, nitihwihtikamare, inaran nispitakaimare nanpirinsu, ya'werinsu** nahpatun Istatu Piruanu inapuchin sahkatarin.

Ya'kuwiauna kanpu ninanua'waru'sa, nuwitapuna unpu ya'wepisuna, unpu nanpitupisuna, nahpumantawatun wa'anu'sanenata.

Nispitakaisu Tiriychuru'sa a'naya 'a'naya, inaran wentunen kanpu piyapi'sa ya'wetupisu ina kenanariwa **Kunpiñu 169 OIT itupisuke**



Usekateru'sa, inaran Puteri Utisiare, inawitari nihkapuna wa'anu'sa kunperikaisu ya'werin Ley teninsu. Ihsuwita ina **Tratados internacionales Kunpiñu 169 OIT itupisuke, Declaraciones nininsu, inaran Kuntitusion Leyes Istatunke**, inake nispitakaimare tirihchu ninanua'waru'samare ya'werinsu, Istatu Ninanua'wa nahpuinanchin ninispitapuna nanpipisu.

Nahpumantarawatun, ihsupitakeran ya'weantapi, inawanta ni'pi kunperikaimare, ihsuwita ina:

- Urekanu de control de convenios, ina OIT itupi.
- Kumisiun, inaran Kuriti tirihchuru'sa piyapiru'samare ni'pisu.
- Inaran a'na ya'wantarin Kumiti inawanta Tirihchu piyapiru'samare ni'pisu, inke na'a nakiunusa yamupi.

Inawa nihkamare, nahtanamare ku nuyawe sahkatuimare, ku sahkaiyawe. Nuwantere kanpuwa ninanua'wanenpua nuyahsha niwentunatawa ina nihkakasu, inamare nuwantere Apukatu, ina nine ihseke Piruke, ku manta nihpachinarawe.

### 3.2 Tiriychu kanpu piyapinken



Kanpu piyapinta, unpuina a´na piyapi tiriychu ya´weterin inapuchin inanta tiriychunen:



Kanpu piyapinta nahpuinahchin a´nawita Piruanuru´sapuchin:

Kanpu piyapinta ya´weterin ina tirihchuchachin, nahpuinahchin a´nawitapuchin...

Nahpapunawe kanpu piyapisu tirihchu nuya, nuyapuchi ya´weterin:

- Tirihchu sha´wikasu intuaranta inasu, pewenan ku pewenanwen.
- Tirihchu unpuina nanpikasu, ya´wekasu.
- Tirihchu ku ayatakasu unpu ya´weterinsu, unpu nanpiterinsuna.
- Tirihchu a´murinsu a´muhkasu.
- Tirihchu nunkakasu nuninsuke.
- Tirihchu nihkakasu, nahtekasu nahterinsu.
- Tirihchu Kirihka nituhtakasu, ninunentaksu, sahkatu ya´wetakasu, nuhya ya´wekasu, a´nawita Piruanuru´sapuchin, nahpapuanawe nanpipisu, ya´wepisu inturansuna.

Ya´ipi ihsu tirihchu kanpu piyapi ya´weterinsu, Istaturi nispitapun, inseranteranata nihpirinwenta ina kanpu piyapi.

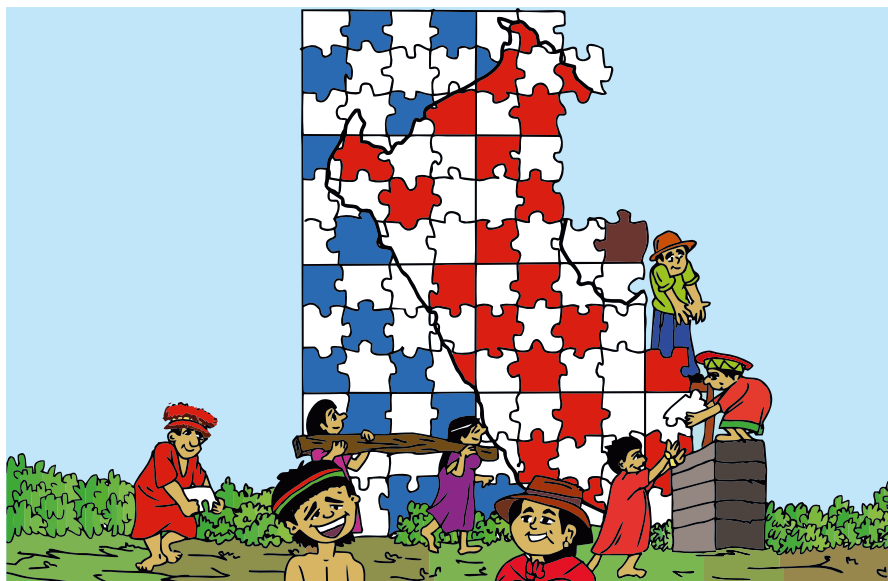
Nahpatun Kanpu piyapisu tirihchu nuya, nuyapuchi ya´weterin, ina wa´anu´sa nihkakaisu na´kun ina kanpu piyapi nanan yawetupachin, inamare ya´weterin:

- Tirihchu sha´wikasu intuaranta, pewenan ku pewenanwen.
- Tirihchu sha´witakaisu ma´mareta ina inautapi.
- Tirihchu sha´witakaisu unpu nitihwintiapunta.
- Tirihchu ya´wetakasu Apukatu.
- Tirihchu ninanuawanen, wamirianenpita nituhtakaisuya´weterinsu panka nanan.
- Ma nanankesuna nunsarin yunkirinsu, wa´anu´sari nahtanakaisu, nispiyakaisu (Punisiari, Wisekariari, Puteri Utisiari)..

Ihsupita tirihchu ya'werinsu ya'ipimare, kemapiru'samare, sanapiru'samare, ina ni'newa pihkeran inaran niantakasu, nuya nihkakasu ma tirihchuta ahkete kanpu sanapiru'samarenta inawamarenta ya'werin nani ya'nan yunkirewasukeraware, inakeran inawamarenta tirihchu nuya nuypuchin inawanta ya'wetupi ina ihu nuwitakasu:

- ATirihchu nispitakaisu ya'werinke, ya'werinke inaran a'naparihti pa'ninke ya'werinkeran.
- Tirihchu karuku ya'wetakasu, ketakaisu ninanua'wanenke.

## Unpu nanpirewasuna, unpu ya'werewasuna ina nispita'inenpua



Nahpuinahchin, nihkakamare kanpu piyapinpua, inaran a'na piyapi ku kanpu piyapiwe nininsunta, inamare kanpuwanta wa'anua'na nispitainenpua, unpu nispitaunenpuatanihka, ihsupuchin. Kanpu piyapinpuasu, ninanua'waru'sake ya'werewa, nihsha kanpuwasu nanpirewa, nunewakeran, ma'sharu'sa nahterewakeran, a'na yuhse ya'weterewakeran, nihsha niwentuanewa



ya´werewasu, kurihkimarenta, nihsha sahkaterevasu. Intuaransuna we´newasu, ina ya´ipi nispaitawachinenpua, intintuwachina nahpuruware ya´werarin nahpuinahchin nihkaku.

## Tirihchu ya´weterin nu´ten sha´wikasu inserasuna



81

Ya´ipi piyapi´sa, sanapi´sa kanpupiyapi´sa nininsu ya´weterin tirihchu nihkaku, nunkaku un´tehken, **ku tapanakasu ya´werinwe.**

Ihsu Tirihchu nanitere inapuchin nihkaku ku´ta kanpu ninanua´wakenta ya´wepirewe.

Sha´wikasu nu´tehken, ku tapanakasuwe, nahpa´a´na, inaupatewa nispitauenpua ku kanpu piyapi nihpisuwe.

## Tirihchu ahtintinenpuasu

Ya´ipi sahatupisu Istatuke ya´wetupi sahatunena ahtintinenpuasu inaran nispitainenpuasu.

Wise, Wisekare, Punisia, ku nihpun Tihwinsur ku nihpun a 'na wa'anu'santa, a'na kanpu piyapi nanan ya'wetupachin, ihsupuchin nihkapuna:



- A' narumarachin ahtintikaisu ya'werin.
- Kanpu piyapi kirihka pu'murarinsu Istatuke nihkakaisu, ama ahkete wa'kikamarewe.

### Tirihchu kanpu sanapiru'sa ya'weterinsu

Irahkakeraware kanpu sanapiru'sa ku nispitapiwe nanpirinsu, ya'werinsu, ya'yupi Piru ru'teke, nahpatun ayantumakasu ina kanpu sanapi tirihchunenanta:

- Nispitakaisu ya'werinke, intuanta pa'ninkenta.
- Nispitapuna wa'anu'sa Istatuke sahkaturisuari.



- Karuku ya´wetakasu ya´werinke, Istatukenta
- Istaturi a´pihtakakaisu sanapiru´sa tirihchunena, mare, unpuina kemapiru´samare tirihchu ya´werin inapuchin, sanapiru´samarenta ya´werin tirihchu.

## Tirihchu nuya ya´wetakamare



A´natawerin ni´patewa napurinsu: “Derechos sociales y económicos” ina a´nataweri ku intintirewawe: Inachi napuapun tehsarin tirihchu kirihka nituhtakamare, ku kañuruwatunin ya´wekasu, nuyanachachin ya´wetakasu, sahkatu ya´wetakasu, nuyanpiawayanahrinsu tanan ya´wetakasu.

Ihsu ya´ipi tirihchu ya´weterin kanpu piyapiru´sa, ayunkikasu nispiritainenpua, nahtanakasu Istatu kahtawainpuamare.

Ihsupita tirihchu ya´wepirinwe, ihperawanta ku ma´sha ya´weterinpuawe, ku puperi ayarinwen, ku kurihki ya´weterinpuawe kanpu piyapinpua.

## Tirihchu ya´weterinpua Kirihka nituhtakasu, ya´werewasu chachin, nanpirewasuchahin

Ya´ipi kanpu piyapiru´sa ma´sha sha´witawachina, kirihka a´chintawachin Is-taturi ketarinsu, inake nispitapuna unpu ya´wetupisuna, unpu nanpituwisuna:

- Inawa nanan nunpikéchachin a´chintapuna.
- Utilizando ejemplos de la realidad de las comunidades. Unpu ya´wetupisu ninanua´wake ina ni´sawa tuna a´chinpuna.
- Intinfirawatuna, nispitarawatuna nanpiwisu, ya´wepisu.
- A´nutawatuna ma´sharu´sa ya´werinsu ya´werinke ina a´chintakaisu, ina nuya nuya nininsu.



Nahpatun los programas ni´sapisu a´chinaimare, yunkikaisu ina wa´waru´sa kanpunanke nunpisu, nituhtupi sha´wiru´sa, nuwitupi ma´sharu´sa, chinirupi ya´wetupi, yunkipi unpu nanpitakaisu.

Ihsuchi a´na, kanpu ninanua´waru´sa nanitere nuntakasu, Pedagógicos inaran Universidades, wi´nanpuwita, sanapiru´sa wa´wina istutiakaisu, inake inawa nanpiwisuchiachin, ya´wepisuchiachin kirihka nituhtakaisu ina yunkikasu.

**NAHPATUN ISTATURI  
KETARIN KIRIHKA  
NITUHTAKAISU,  
INSETANA,  
UNPUINTANA  
YA'WEPISU,  
NANPIWISUCHACHIN**

Iseke tenin: Istatu yuhkapun kirihka nituhtakaimare, insehkesuna ya'wepi inake programas inawa yuhkapuna a'chin unpuinsuna ya'wepisu, unpuinsunanpiwisukechachin, nahpatun A'chin na'piru'sa, inake ya'wepisupitarahchin, nuwiru'sarahchin, inawa nanan, kahtu nanan nunpihsuuitarahchin, inakesahkatakaisu ya'werin.

## **Nuya ya'wekamare, kirihka nituhtakamare, inake kanpua nuhya pu'chinenpua**

85

Kanpu piyawinpua tenewasu, kechinenpua kirihka nituhtakamare kanpua nunewakechachin, unpuinsuna ya'werewa, unpuinsuna nanpirewa. Inauchachin tanan nimiruru'santa kamaikasu ninunenakasu ya'werewake.



## Sahkatu, sikuru ya' wetainpusu

Istatu perihkuhpa'in kanpua sahkatenenpuamare, ahkete sakatu ya'wein kanpuamare, insesuna ya'werewa, unpuinsuna ya'werewake. Nahpatun sah katu ketawachinenpua nispiritainepua, nuwantere wasu sahkatu:

- Ina sahkatu ketawachinenpua inake nispi tainenpuatirihchu ya'werinsu kanpuamare sahkatamare ya'werewake.
- Ina sahkatarewake ni'inenpua amana'kun keware asahkachinenpuasu, (inautu pachinenpua sha'wikasu Minitiriuke Sahkatumare nininsu, ku nihpun ina ni'pisu)
- Istatu yunihkapun ya'wetainpuamare kanpuanta ahkete nituhtakamare (Políticas y planes de profesionalización) ma'sharu'sa nituhterewasupita apa'china (yu'me, sa'ya, shunpi, tehshi, inaran na'kun ya'werinsupita), inakeran kanpuwanta na'kun ma'sha ya'wechinpua.
- Sikuru ya'wechinpua, ama kañuruwatamarewe, nuya nanpikamare.



## Tirihchu ya ´weterinoua puritihkake mahtakasu



Ya ´yuwinpua kanpu piyapinpua mahtakasu, sahkatasu purihtikake. Inamare ihu tirihchu ya ´werin:

- Suhwerakasu.
- Tirihitapun ma ´shamaresu wa´anu ´sari ketuwachin
- Piyapiru ´sari kahtawapun ina elegido nihkakamare.
- Karuku ya ´wetakasu uwihsinaru ´sake a ´nawitapuchin.

Nahpumantarawatun mahtapun kantitahtu nihkakamare: Arkanchimare, Munisiparemare, Nihkiunmare, inamare, ya ´wetakasu piyapinenpita mini-mo 15%, inapuchintenin kirihkaru ´sake (Ley de Elecciones Municipales N° 26884 y la Ley de Elecciones Regionales N°27683) inake a ´nutarinenpua kanpuamare.

### 3.3 Tiriychu kanpu ninanua'waru'samare



**Kuntitusiunkeartikuru 89°** inake tenin: Kanpu ninanua'waru'sa ya'weterin, ku ayarinwe, personería legal itupisu, inachi ya'weterinpua tiriychunenpua nahpapunawe a'napitakeran nuya nuya. Nahpatun tenewa Kanpu ninanua'wa, nanpikasu, nuya pu'teinenpusu.

Ina tiriychu nihkeramatakasu nahtantakasu lstatuke, ina nihkapun wa'an, Kanpuwari wayunawatewa nanpirewasuchachin, ya'werewachachin ni'tun.



## Wentunen kanpu ninanua´wa tirihchu ya´weterinsu

**Kanpu ninanua´waru´sa ya´weterin tirihchu inauraihchin yunirinsu unpu su´sukasuna ya´wepike:** ihsupitake ina: Kurihki yunihkasu, ma´sha ya´wetakasu, nuya ya´wetakasu nanpirinke. Ina nihkakasu Istatu kahtawapun, ni´sawatun unpu ya´wetupisuna, unpu nanpisupitana, nahpumantarawatun mahtakasu sahkatakasu kunsu rinkiuinke.

Nahpatun, nuya, nuya a´naya´werin Tirihchu Nahtanainenpuasu, (Derecho a la Consulta Previa e Informada), Sha´witainenpuasu, ma´sha sahkatusu na´kun nihkakaisu yunkipachina.

Kanpu ninanuawaru´sa ya´wetupi tirihchu kuntururakaisu nu´panena, istaturi nispitakasu. Nahpatun ku nuyawe ninanua´waru´sa te´yatakaisu, uhkuikaisu ya´wepikeran. Nahpumantarawatun tirihchu ya´weterin nuyahsha nitakaisu, sahkatakaisu, nararu´sa, ya´kuru´sa nani ma´sha ya´werinsu tananke, inake a´pihtapun, inakeran kamaikasunta ya´werin sahkaturpike.

## Tirihchu ya´weterinpua nahtanakasu Istatu, ku nanitupatewawe nanan anuyahtakasu nihpachin

Ya´ipi kanpu piyapiru´sa, kanpu sanapiru´sa, kanpu ninanua´waru´santa, ya´weterin, tirihchu ya´werinke, insena ina kanpu ninanua´wa ya´werin, ina Istatu nahtanakaisu Istatu nanan anuyahtakamare, pa´puyakasumare, ku nuyawe nanan nitapachina, ina piyapi ku ya´wewanwe nihpachin, inapuchin nihkapuma.

Nihpunawe nanan ya´wepachin anuyahtakasu ya´werewakechachin, kanpuara, ni´sawatewa, unpu nanpiterewasuna, unpu ya´weterewasuna ina ni´sawatewa nihkariwa, ninanua´wanepuake.

Inapuchin nihkapuma nanan anuyahtakasu nihpachin, ketantariwa unpu nanpiterewasuna, nahpumantarawatun tirihchu ya´weterewasu.

Nihkapunawe nituhtakasu ya´weterinpua ma´suna nihkaku, nispitakasu nu´panenpunta, ina tenin **Kuntintusiunke artihkuru 149°**, ina ya´ipi Istatu wa´anusari nuwitupi, nituhtupi.

Kanpu wa´anu´sa ninanua´waru´sa ya´wepisu Ley, **Kuntintusiunke artihkuru: 149°**, inari ka´tanin, kahtawarin ina nihkaimare, nanan anuyahtakaisu ya´werewakechachin, nahpapunawe, ni´sawatuna Tirihchu ya´weterinsu ninanua´wanen.

Nahpumantarawatun ninanua´waru´sa, piyapi´santa inake ya´wepisunta nituhtakaisu nanan anuyahtakaisu ina tirihchu ya´wetupisu, nihpunawe ni´sawatuna, unpu nanpitupisuna, unpu ya´wetupisuna, ina itere: **Justicia Intercultural**, ina ihpera wa´anu´sa nihsapi sahkaturpike

## KUNTITUSIUN NUWITERINPUA

**Kuntintusiun Pirunke, artihkuru 89°**, inake nuwiterinpua kanpuwanta piyawinpua ya'werewasu, nanpirewasu. Inachi tehkapun napurin kanpuwanta tirihchu ya'weterinpua tirihchu, Istatu nuwiterinpua.

### TIRIHCHU KANPU PIYAPI NININSU NU'TEN SHA'WIRINSU

Kanpu ninanua'wasu, inaura ninuwiterin kanpu ninanu. Ina tirihchu unpu nanpirinsu, unpu ya'weterinsuna ya'werinke

### TIRIHCHU YA'WETERIN NINANUA'WA NANPIKASU

Ku kanpu piyapi'sara nanpiwiwe, ninanua'wanta nanpirinsu ya'weterin. Nahpatun Istatu sahkatu ya'weterin ina kanpu ninanua'wa nihkakamare, kahtawakamare, ketakamare, nahpapunawe nispitapun unpu ya'wepisuna, unpu nanpituisu, wa'anusanenanta, nu'panenata yunkipisunta. Nahpatuna kanpu ninanua'waru'sa ina piyapi'sanen nuhya ya'wekaisu, ku inkariteranta apihkapunwen, ku inkariteranta aweatuna tihkiapunawe, ku nuwancharapirinwen uhkuwiapunwen, ku inkariteranta nanpiransu, yunkirinsu, nuninsu ayateke itapunwe, nahpatun nispitainenpusu unpu ya'weterewasuna, unpu nanpiterewasuna, ku interanta nu'wiainenpuasu ya'werin

**TIRIHCHUYA WETERINISTATURIKAHTAWAKASU,  
PA PUYAKASU**

Istaturikanpu ninanua'wa nihkakasu, kahtawakasu, ketakasu ama unpu nanpiwisuna, unpu ya'wepisuna ina ku ayatakaisumarewe, irahka, ihpera taweri we'ninke. Ya'ipi ma'sha ya'wetupisu inanta a'pihtakaisu: Ihsuwita ina: Lugares arqueológicos itupisu, nishiru'sa, senuhtewisu, yuhkarintupisu, sanapiru'sa ayaapisu, inakeran na'a ya'werinsupita. Inawita a'nateranta iwatuna kepawachina tiriychu ya'weterin nahtankasu insuarina keparin a'naparihti, ina ayanakasu ya'werinkechachin, Inauchin Ley tenin.

**KU INTERANTA  
WAYANTAHPUENPUAWE**

Kanpu ninanua'waru'sa ina piyapi'sanenta, tiriychu ya'wetupi, ku pu'piyanteranta tewetakaisu, narintakaisu, pinuhkaisu, aninkechachin, ku nihpun pu'wanakeran. Inautuwachina nanitupi pakakaisu tininsiatakaisu Puteri Utisiare'pa. Inautupachina pawerekaisu. Ihsu tiriychu kenanariwa Teripunar Kuntintusunarke, en la sentecia N° 04611-2007- PA/TC inake

A'na tirihchu ya'wetumantarin, ina ihisu:

## **Tirihchu kanpuara ninewasu, su' sutepuchin nihkakamare**

Kanpu ninanua'waru'sa ya'weterin tirihchu inauraihchin yunihkasu unpu su'sukasuna ya'wepike(derecho a la autodeterminación) ihsupitake ina: Kurihki yunihkasu, ma'sha ya'wetakasu, nuya ya'wetakasu nanpirinke. Ihseke ku itarinpuawe lstatukeran a'putakasu, nimara ya'yuwinpua kemapinpua, sanapiru'sa piruanunpua.

Inapuchin ya'werin ni'tun:

Kanpu ninanua'waru'sa yunihpi, nuwantupi, inawara yunihpi unpu su'sukasuna ihsupitake: Kurihki yunihkasu, ma'sha ya'wetakasu, nuya ya'wetakaisu.

Nihkakaisuinawaranikupirinapunaya'wepike,a'nai'a'nai'ya'wetupike, inake ni'puna unpu pa'puyapunata nu'panena.

Ina kanpu ninanua'waru'sa ya'wetupi tirihchu irahkakeraware ya'wepike, nanpiwike.

## **Tirihchu nuyahsha niakukasu**

Nahpatun:

- Nuyahsha niakukasu, inake ku insha wa'anu'sariteranta apihkaisu nuwanterinwe.
- Yunkikasu unpu sahkatakasu ninanua'wanenke
- Yunkikasu unpu sahkatakasuta nu'panenke, piyapi'sare inake ya'wepisuahchin

## **Tirihchu ya´weterin su´sukasu ya´wepike, yunkirinsuchachin nihkapuna**

Istaturi yunihtapun, kahtawakasu, proyectos su´sukaisu kanpu ninanaua´waru´sa. Inake a´paikaisu: Unpuinta yunkipi ihpera, ma´sha nihpike, unpu ya´wepisu, unpu ya´wepisu, unpu ya´wepisu ihsuru´teke tanan kaniawayanahrinke, ama nahpunin ya´wekaimarewe pi´i na´werinke.

## **Tirihchun ya´weterin kanpu piyapi kupirinu rikiunareke yawekasu**

Ya´yuwinpua kanpu ninanaua´waru´sa ya´wetakasu a´na kanpu piyapirichachin Kupirinu Rikiunareke.

94

## **Tirihchu ya´weterin nahtanakainenpusu, sha´witainenpuasu**

Ihsu tirihchu nuya, nuya kanpu ninanaua´waru´samare. Nahpatun, nuya, nuya a´na ya´werin tirihchu nahtanainenpuasumare, sha´witainenpuasu, ma´sha sahkatusu nihkakaisu yunkipachina nihkakaisu.

Ina tirihchu nahtanainenpuasu, ku sahkachahtasui, na´kun sahkatu yunkirapike, sha´wichinenpua unputaunenpuata nihka ina sahkatu nihpachina kanpuaru´teke.

Ihsuwita: Karihtiramare, a´pininsumare, nu´pa ahkuweru ya´werinsupitantamarenta (Kuri, pihtururiu, ahkete ya´werinsu inaran naranta)

Nahpatun, wa'anusa, ya'yuwinpua ya'werewasupita nihsha, nisha parihchike, ma'shasu yunkipachina, tinta akukaisu, ma'shasu pa'a'in tuhpachina, Proyectos, inawita a'nataweri ku nuyawe nitainpuasu nihpachin, sha'wichinenpua nituhtakamare, ama a'nataweri, kanpu piyapinpua ku'wayanakamarewe, ku sahkachahtasuiwe nunkakasu ya'werin.



### Tirihchu ya'weterinpua nu'panenpua, nihkakasu, a'pihtakasu, pa'puyakasu

Ku interanta itapunkenwe ina nu'panen a'pihteke. Nu'pa ninanua'wamare nunkakasu nihkakasu nihpachina ya'ipinpua yamurawatawa, nanpirewasuchachin yunkirawatewa yunkikasu.

Ina nu'pa ya'weterinpuasu ninanua'waru'sake, ina intintinkasu irahkakeraware, tatamashunenpua nanpiwitapuna, inawari a'pihtatuna

ya'wepisu, inachachin kanpuwanta ihperawanta, ya'weahrin, inake kusharu manewa, sahkaterewa, inanterewa, pe'irewa, ina a'pihtakasu.

Nu'panenpua nia'awa, a'pihtawa, insesuna sahkaterewa, insesuna ya'werewa.

Ina tirihchu ya'werin nuwiteripua Teripunar Kuntintusiunareke, ina sentencia N° 1126-2011-HC-TC.

## **Sahkatu ya'weterinsu Istatu kanpu ninanua'waru'sa-mare, nu'pa ya'weterinpuasumare, inake nihkapun, nanpirewasu**

Istatu sahkatarin ihsupuchin:

- Kanpuwa nupanenpuake, inake ya'werin nanpirin. Nahpatun piyapinpua inake ya'weatewa nanpirewa.
- La corte Interamericana de Derechos Humanos, un'tehken tenin: Panka teweterinenpua, tewetaunenpua ina nupa irahkakeraware a'pihterewasu, uhseretainenpuasu, yunkiwachina, Istatu wa'anu'sa, nani uhseretupachinenpua, yunkia'awa inake nani ma'sha ni-newa, sahkaterewa, inake nanpirewa, nahpatun ihstu organismo a'pihterinpua.
- Istatu kechinpua tirihchu wa'anentakamare, inairahkakeraware tatamahshunenpuanken ni'tun, ku'mini tihturu ya'wetupirinwen, kanpuwanken niin.

## **Ku ya'werinwen nanan ya'werewakeran uhkuinenpuasu**

Nahpatun ku ya'werinwen nanan ya'werewakeran uhkuwiinnenpuamare, inapuchin nihkakaisu yunkipachina, a'nahtaweri nimara, uhkuinenpuasu a'na parihti, kanpuwa nuwantuwatewa nahpuruware inauchin nihkapun.



Nahpapunawe tenin Kunpiñu 169 OIT, a'nahtaweri anahken ninanua'waru'sa nimara, ituwachinpua ihsu organización. "Inauchinsu nitakainenpuasu nihpachin, kanpua nuwantuwatewa, ya'were ku nuwantuwatewawe ku inapuchin nihsarinwe:

*"Ku nuwantuwatewawe, inpuchin nitaunenpuasu nihpachin, ya'wein nanan ma'mareta ina inautarinenpua, ina intintimarawatewa, nahpapunawe, nituhtakasu ma'mareta, unpuariwata pihpirarewasu, ma'ta ketaunenpuasu inamare, ina nituhtakasu".*

## **Tirihchu ya'weterinpua ma'sharu'samare tananke ya'werinsu**

Ya'weterinpua nu'panenpuake ya'ipi ma'sharu'sa ya'werinsu kanpuari nihkakasu, sahkatakasu. Ku nanitapunawe se'wakaisu ku kanpuari ketupatewawe. Ku insuteraranta, ku ninanua'wariteranta, tapikapunwe ina ma'sharu'sa tananke ya'werinsupita.

Kanpua nu'pa ya'weterewasu, nani ma'sha ya'werin: l'sha, tanan, nani ma'shara'waya ya'werin, inaran kuriru'santa, ina l'staturi a'pihtarin, ama na'kun, na'kun a'na parihtikeran inpirihsarusari uhkuikaimarewe. Ina yunkipachina nahtainenpua, sha'wichinenpua (Consultas previas e informadas)

Nanisu nahtapachinenpua, sha'wituwachinenpua (Consultas previas e informadas), ku ku'chahchin na'kun, na'kun uhkuwipunawe, inake Kanpu piyapinpuanta tirihchu ya'weterinpua sahkatakasu, ma'sha ma'patakamare ina uhkuwirapachina.

## **Tirihchu ya'weterinpua sahkatapachina, ma'sha ma'patakasu ina uhkuwirapachi**

Nu'panenpuake sahkatapachina inamare pawere ma'patakariwa, kurihke, ku nihpun ma'sharu'sa ina uhkuipikeran.

Inamare ninanua´wanenpua nuya tehkariwa kirihkake nishiriwa, ya´yuwinpua nituhtakamare, Ina napurin: Teripunar Kuntintusiunar, inari nuwiterin ihisu tirihchu en la sentencia 22-2009-PI/TC.

### **Tirihchu ya´weterin inawara nanan anyahtakaisu**

Ninanua´wa ya´weterin tirihchu inauraihchin nanan anyahtakasu, ya´werinke, unpuina nanpirinsu, unpuina ya´werinsu ni´sawatun nanan anyahtapun, wa´anusari anyahtapun.

Inake kanpu ninanua´wake yunkipisu nispiritakaisu, wa´anu´sari Istatuke sahkaturpisu.

### **Tirihchu ya´weterin nihkakasu nu´tehken, nanan anyahtakasu ya´wepikechachin**

98

Nitewetupachinara, ya´wepi kapini, ku nihpun a´na ninanua´ waru´sare, Istatu tananpitapun inawara nanan anyahtakaisu, nanpiwisu ni´sawatuna, unpuina ya´wepisu ni´sawatuna, irahka nanpihischachin nanan anyahtakaisu, ina napatere Tirihchu kanpu piyapinken, ku nihpun tirihchu inauranken.

Ku nanitawapachinarawe, wa´anu´sari Istatuke sahkaturpisu inawari nihkapuna, Nihpunawe, inawanta ni´puna unpu nanpitupisuna, unpu ya´wetupisuna. Inamare nuwantupi peritajes culturales o antropológicos itupisu.

Kanpu piyapiru´sa ana´intakaisu, penenakaisu nihpachin, nihkakaisu unpu nanpiterinsuna ina piyapi.

### 3.4 Ma sahkatauta nihpun kanpu piyapi, inaran kanpu ninanua'wanta



**Tinunsiatakasu,  
tirihchunenpu  
anuwitakasumare,  
a  
nispitatakasumare**

Kanpu piyapi, kanpu ninanua'wa tinunsiatakasu Punisiake ku nihpun Wisekariake, nahpunin a'na piyapi pu'tupi ni'patewa, ina ku ninanua'wake manta nihpachinawe. Nahpumantarawatun tinunsiakasu Istatu wa'anusa ina kanpu piyapi tewetupachin, nahpunin pu'tupachin.

Ya'ipi kanpu piyapi'sa sahkatu ya'wetupi kunperikaisu, inaran nihkakaisu a'nawitanta kunperikaisu, tihwintakaisu ina artihkuru 38°, Kuntintusiun itupisu.

Kanpu piyapi, inaran kanpu ninanua'wanta ya'wetupi sahkatu, a'napitari nispitaisu, tirihchu ya'weterinsu, inaran a'nawitamarenta, ama Istatu wa'anusa a'nataweri wa'yantakaisumarewe,

### Yunikasu ahkete ma'sha nituhtakamare

Yunikasu unpu sahkatariwata, ma'ta nihkariwasu ma'sha ya'wepachin

Kanpu piyapi, kanpu ninanua'wa, ya'weterinpu sahkatu nihkaku yunikasu, nituhtakasu ma tiriichuta, ma sahatuta nihkaku kanpuasu ya'weterinpu.

Ina kenanamare nanitariwa paate nahtantakamare Puteri Utisiake, ku nihpun Ministiri ya'yuwimare nininsuke, ku nihpun Tiwihsa Ya'yuwimare'pa nininsu, Punisiake, inaran na'a ya'werinsupita Istatuke, inake nahtantamare ma'sha a'nahken ku intintirewasu.

### Nispitaksu Istatu wa'anusa

Kanpu piyapi, kanpu ninanua'wa, ya'weterin sahkatu nihkaku nispitaku ya'ipi wa'anusa sahkapisu Istatuke.

Ina nispitu tehkapun tehsarin, ina wa'anusa nutupachinpuwa, ma nanansu sha'witapachinpuwa nahtanakasu, inake ni nutatewa kankan yunikamare.

Ina pihkeran kanpuanta sha'witaku inawanta nispita'innenpuwa

### Yunikasu unpu sahkatariwata, ma'ta nihkariwasu ma'sha ya'wepachin

Ya'weterinpu sahkatu nihkaku, wa'anusa ninanua'wake ya'wepisupita ihsupita ina: Chirinchi, Sahkatu Wa'an inapita Istatu Piyapinenpita inawasu sahkapisu pa'yataku, inawanta ya'wetupi sahkatenena nihsapi, a'na taweri ku nanitasui kahtawakasu.

Nahpatun ihepra yunikasu unpuanta inawanta sahkapi, unpuanta wa'anenpuanta ninanua'wake ya'werinsunta sahkaterin.

Yunikasu inaware'kenpu yunkiatewa, sahkaterewa, ninanua'wanenpuwa, urekanisasienenpuwa apankatamare, ina kahtawarinpuwa Istatu sahkapisu a'harumarachin nihkakamare sahkatu yunkirewasu.

# KIRIHKA WENTUNU'SA

101

## TIHKINAMEN

Nuya ya' wetainpusu, nuya sha' wikasu, ahnahken nananu'sa, nituhtakamare, ma'ta ina tehkatun napirin.

### Kuntitusiun Puritika:

Ina Ley, Istatu ya' weterinsu, inake ya'yuhpia tirihchuru'sa ya'werin kanpuwamare, ya'ipimare.

### Nanpiterewasu, ya'werewasu nispita'inenpua:

102

Nahpuninpu' terinenpuasu, nuhkaninenpuasu, nu'wirinenpuasu, ku inawapuchin napirewasumarewe, na'kun ahkete ya'werinsu, ina naputupi.

### Tirihchu nihsha nanpirewasu:

Nanan ya'wetupachinpura Istatu nuya pu'taipusu, unpu nanpiterewasuna, unpu ya'weterewasuna, ina ihisu derecho intercultural.

**Nihsha,  
nihshamare  
tiriychu  
ya'werinsu**

**Tiriychu ma'shamare nininsu:** Niwirinenuasumare, nahpunin akurinakusu mahsha nihkatuna, nu'pamarenta.

**Tiriychu wamiriamare:** Wi'nanpu nuhkumakamare, sa'an kemari keparawatan nuhkumakamare, wi'nauchachinihsu tehkamare.

**Tiriychu kirihkaru'samare:** Nihsha, nihsha kirihkaru'sa uwihsinaru'sake yu'nesu, ku nanan anuyahtakamarewe, a'na sahkatumare.

**Nihsha,  
nihshamare  
tiriychu  
ya'werinsu**

**Tiriychu sahkatumare:** Sahkatu keterinensu, inamare pawererinensu.

**Tiriychu Pinar:** Teweresu, ku nuyawe ninesu.

**Tiriychu Kuntitusiunar:** Tiriychu ya'weterinkensu nuya, nuya nininsu, ihsupita ina: Nanpiransu, nuya ya'wekamasu, nuya pu'teinensu inamare.

**Tirihchu Pinar:** Ina tehkapun ma'sha teweresu, pahasresu.

**Tirihchu Pinar**

**Teweresu:** Ina lstatumaresu ku nuyawe ninansu, ku nuyawe na'kun ninansu, ma'sha tapiransu, ina ni'pachina, kenayatupachinen inake Wiseru'sa ana'antarinken, ku nihpun tahshinanpeike pa'saran.

**Teweresu:** pu'piyan, pu'piyan ma'sha teweteransu ina naputupi. Nihpirinwen lstatu inakenta ana'interinken, ku ku'chahchinwe inasu, inamaresu.

**Tinusia:** Ku nuyawe ma'sha akurinmare, tewerinmare, tininsiateresu, ina nahtantakaimare, ya'wepachinsu in-auchin ana'itamare ina inaurinsumare. Ina nihkakamare nanitere nihkakasu nishihtupinan, ku nihpun nunekeran.

**Tirihchu Pinar**

**Tinunsiatuna'pi:** Piyapi tinunsiatarinsu ni'pachina a'na piyapi Na'kun ma'sha tapiwachina, tewepachina. Inuarachachinta nihpun tetewetupimare, ku nihpun a'na piyapi.nahpatun nituhteke unpuinta ma'sha ni'patan naniteran tinunsiatamasu, inapuchin a'nataweri ni'patan tinunsiatamasu ya'werin.

**Tinunsiarapisu:** ina piyapi tewerinsu nihpachin, na'kun masha tapiachinsu kenanpachina. Nah-pumantarawatun itere piyapi sha'wirapipisu, nani tewerinsu kenanpachinasu Wisekariari.



**Nahtanteresu  
nanan  
anuyahtakamare**

**Nahtanteresu nanan anuyahtakamare:** Inasu kiihkaru'sa ninansu, yu'nansu Puteri Utisiake, inake nahtateransu nanan anuyahtakamare, ku tahshinan peimarewe nihpachina. Ku sahatu niterinemarewe, ma'sha tapitupachinen, inamare Usekatu Sipirike ina nanan anuyahtakaimare.

**Timantuna'pi:** Piyapi tiimantaterinsu Wise Sipirike, ku piyapi atahshinan peitamarewe.

**Timantawisu.** Ina piyapi timantareke, ikinnanan keran nahtanesuKu sahatu niterinpumarewe, ma'sha tapitupachinpura, inamare ina ninesu.



**NIHSHA, NIHSHA TUHKUMINTURU 'SA.  
NINESU**

**107**

## **NIHSHA, NIHSHA TUHKUMINTURU´SA. NINESU**

Ihseke nihsha, nihsha kirihkaru´sa, tuhkuminturu´sa a´nutarainken nihkatun, nishitun wa´anu´ sake pu´mukamake, yuhkamake, tirihchunen nahtantamake, ku nihpun tinunsiatamake ku nuyawe pu´tawachinen.

Ihsu kahtu tuhkuminturu´sa, kahtu kirihkaru´sa: Solicitud de Garantías (Modelo N° 01) y Demanda de Habeas Corpus (Modelo N° 02), yuhkakamare, ku nuwanterewe apukatu wirmakamare

Inaran ihesu karakteran nininsupitasu, inamaresu nuwantere wirmakaisu apukatu. Nahpatun apukaturirahchin nihkapun.

## KIRIHKA 1

### PIYAPI ACHA´EHKAMARE NAHTANTERESU

**EXPEDIENTE** : (dejar en blanco)  
**ESCRITO** : 01  
**SUMILLA** : Piyapi acha´ehkapu

#### **SIÑURU: WISE NITUHTUN NINANSU INA NANANMARE**

KUSI ISIPINURA TANTI TUHKUMINTU: .....  
. ya´werausu: ....., Kari nihprisintarawe MAURU  
WIRISE TAYAURI, kema nispitarawatenken itaranken:

#### **i. Nininen timantataransu, insesuna ya´werinsu:**

KURUNIR PUNIHSIA, KUANSHA PIRI SURIA, ina perahkaisu nininsu, punisiake, sha´witasu insesuna punisiaru´sa nihsapisu, en calle Doza N° 274 (Piyapi ku nuyawe nitarinkensu.

#### **ii. Nahtanteresu**

Akurarawe tinunsi acha´ehka´umare tirihchunen ku nispitapisu ni´tun, uhseretupi tirihchunen, ku nuyawe akupi, nuniterinwe aninke iratakasu ni´tun Mauru Wirise Tayauri, ina mahpi ku nituhtasuwe ina timantararawesu.

#### **iii. Tirihchu Kuntitusiunar teweterin**

Ina Tirihchu kenane artihkuru: 2 inciso 24, literal f Kuntitusiun Purihtika Pirunken. Inake tenin ku interanta mahkapunawe, ku ya´wepachinwe kirihka mahkaisu, Wise tehkaware mahkapuna, ya´wekasu nishipisu, ku nihpun wa´anu´sa Punisiaru´sari, kenanpachina ma´shasu tewerapachin na´kun nahpuruware tenin

#### **iv. Ihsupuchin yunkiatu timantatarawe**

1. Timantatarawe, nihprisintarawatu Mauru Wirise Tayauri amikunu ni´tun.
2. Ina riuñunkeran pakasu, mahpi punisiari, kepapi ku tuhkumintu keparinwe ni´tun, i´wara ahketeran ayaterin nihkasu inaurin

3. Punisia tenin ku nininen ya´werinwen RINIKE, nahpatun ku ihperawanta uhkuwipiwe, tehsapi nininen yunihtarai, ku manaiwe, tuhpinan nahtantarai; tuhkumintunwan, ku tuhkumintunwanwe. Nihpirinwen nani a´na simanatarin Mauru Wirise Tayauri, ku uhkuwipiwe.

4. Ku ya´werinwe nanan Utisikeran, ku na´kun tewerinwe nihpirinwe inautapi; nahpatun Puteri Utisiare, a´narumarachin yu´in nanan uhkuikaisumare.

#### **v. Ihsupuchin tirihchu ya´werin**

Timantatarawe ihsupuchin ni´tun: Artihkuru: 2 inciso 24, literal f Kuntitusiun Purihtikake ya´werin ni´tun.

#### **vi. Unputa pawere nahtantarawe**

Munasqampa kayninman hinaqa manan qullqimpi aykayaynin atikunchu.

#### **vii. Unpanta inauchin nihsarawe**

Inauchin ya´werin Kutihku Purihsesare Kuntintusiunareke ni´tun.

#### **viii. Kirihka yu´sarai**

1. Kupia tuhkumintu kahken
2. Kupia tuhkumintu irahkayanen, ina inake nihsarinsu.

#### **ix. Anexos. A´na kirihkaru´santa**

1-A. Kupia tuhkumintu kahken.

1.B. Kupia tuhkumintu irahkayanen, ina inake nihsarinsu.

### **INAPUCHIN NUNAWESU**

A UD. pido admitir a trámite la presente demanda. Kemari amanuteke ihsumantatarawesu.

Ninanu, kahtawini taweri, tuken yuhki nihsawasu, kahtu waranka shunka kahtawini pi´i

## KIRIHKA 2

### NAHTANTERESU GARANTIAS KANPUMARE

SIÑURURU'SA

Kupirinasion .....

**KANPU NININENPU**

NININNENPU INARAN AHPICHITUNENTA

.....  
INSU NAHSIUNKERANTA: Peruano

TUHKUMINTUNEN NUMIRUNEN: .....

INSETAYA'WERANSU.....

Nuya sha'wiresu kanakaimare ya'weranke.

PI'IHPINEN.....

MAKETASAHKATERAN:.....

INSEHKETA SAHKATERAN: \_\_\_\_\_

**NININENA TINUNSIARANSUPITA**

NININEN INARAN AHPICHITUNENTA:

.....  
YA'WERINSU : .....

PI'IHPINEN (Tantiake)

.....  
INSEHKETA SAHKATARIN (Nuwituwatansu:

**MOTIVO DE LA SOLICITUD DE GARANTIAS**

Tinunsitarawesu nani taweri pinurinku, tehpararanken iterinku, kenanawe pei piyuran tahshi ninarinkusu. A'nataweri.

Kankirin aweinkusu, ku tewetupirawe kahsu, inake iterinku ku inautapatankenwe ku kahpa kankantarawe, tenin un'wipachinkura, Ina piyapi teninchi karichi materawe ma'shasu. Ina ku un'ten nunin, ku yunkirawe a'naruyateranta inaurusu, Nahpatun tenawe ku pu'piyanteranta naniterinwen napuin yunkikasu, pinuinkusu, yunkiyatainkusu tehpakainkusu, ina ni'tun siñururu'sa Kupirinasiun, kahtawaku, pa'puyaku kanta ku yunkiahsuwe tehpa'wachinku, te'waru'ku iratahrawe.

Nahtanarawe Kupirinasiun, niin chinihken Ley teninchachin, sha'wi'in wa'anu'sake, ihu naputarinkusu, yunkiyatarinkusu tehpakainkusu, inauchin tenawe nanpiraumare.

NU'TEEN SHA'WIRARAWE, KU YA'WETERINKUWE TINUNSI  
UTISIAREKE, NINAWESU, YU'NAWESU KIRIHKA (SIPIRIKE, PINAREKE)  
IHSU NIHSARAUPUCHIN.

-----  
WIREMAPUN KEMA

Akuapun kupia tuhkumintunen

Taweri.....



## KIRIHKA 3

### TINUNSI AWERINAKU NI'TUN

#### SIÑURU: WISEKAR PURUPINSIARE SAHKATARANSU

KAMIRUNKUANSHAISTAPERI KASTICHU Tuhkumintu 012345678 ya'werausu Av. Los Caifanes 311, tistiritu Laureado, Tihparetamintun Amasuna, ya'werausu purisusar kasicha1713, Kema,nispitarawatenken itaranken:

Akurarawe, TINUNSI AWERINKUMARE, ihstu piyapi Aremahihtun Nustanawe Pahse, nahtantarawe kañarichina, nahtanchina a'narumaruahchin Wisekarianeni tinunsiain Puteri Utisiareke, ina awetuna'pi ihstupuchin ni'tun:

#### 1. INAPUCHIN NININSU

- 1.1 24 nahpuru tawerin, diciembre, 2013 pi'i nihsapasu, wamiriaru'ku nihkasu, napita ni'tun, Nistaurantike "Wiria" yawerinsu Av. Los Caifanes 313. A'na misake ina piyapi u'hsarinkerana, ina piyapi Aremahihtun NustanawePahse.
- 1.2. Nani sauhta ura nihsapasu, iyaraukerana weksu, kañaririn, yanpirarinku, nu'wirarinku. Nah'pumantarawatun mamauwe teweterin inaran wi'nawe nanua'wanuwe.
- 1.3. Nahpuruchachin nahtana'umare pu'kasu, ina siñuru Aremahihtun Nustanawe Pahse, siriwisa puteria mahsawatun pukeh, iterinku. Nahpuruchachin, chimipi anuterawe. Wamirianupita (sa'awe, wi'nawe nanua'wa, mamauwe, a'shatuwaya), sha'witerinaku inake nuwanta tu'tarinku, tanpaeterinku, inake amikunenpitari, wamirianupita pa'puyarinku mahpi ni'tun
- 1.4. Wamirianuwe pa'pi punisia sha'witapuna Asintu aramichu, inake ya'karia nihsarin ni'tun, inawasui, ina awerinkusu nani pa'ninsu we'pi.
- 1.5. Nihpirinwe, inake sahkatawisu inawa sha'wipi insetana, ya'werinsu, tinunsiararawesu.

1.6. Pe'shana ya'weterinku muhtuneuke, ya'murawe, inauchin nuhturu tantiarinkuke uhkuwiterinku kirihkake, ina ketarankema.

## **2. IHSUPUCHIN LEY YA'WERIN NI'TUN**

Artihkuru 121 Kutihku Pinar y artihkuru 2° Ley 26682.

## **3. A'NARI NI'NINSU**

3.1 Ni'nin, shawirapirin, ihsuari Nupirihtu Isiwihteri Nujan, Nistaurantike "Wiria" inanta parahkasu ihu kachike Av. Los Caifanes 313, Tistirihitu de El Laureado.

3.2 Ni'nin, shawirapirin mamanuweri, ina nininen chihsika kastichu Sea. Inanta parahkasu ihu kachike ya'werin en Av. 3 de Enero, Tistirihitu de El Laureado.

3.3 Ni'nin, shawirapirin wi'naweri, ina ninien Werita Istaperi Kunkaperi, inanta parahkasu, ihu kachike ya'werin Av. Los Caifanes 313, Tistirihitu de El Laureado.

3.4 Nuhturu tantiarinkusu N° 231-013-13 del 24 de Diciembre de 2013

3.5 Nuhturu tantiarinkusu N° 399-021-13 del 28 de Diciembre de 2013

3.6 Unpuruhsuna tantiarinkusu, ihu taweri'sa, 24 y 30 Ñuñu Yuhki nihsawas.

## **NAHPATUN INAPUCHIN NUNAWESU:**

Sifuru Wisekare nahtanaranaken nihke, nahtanteke Ley nunin ni'tun tinunsirarawe Puteri Utisiareke awerinkusu.

---

APUKATU

---

TINUNSIATARINSU

## KIRIHKA 4

Escrito: N° 01

**SUMICHA:** SURISITARARAWE  
A´NARUMARAHCHIN, NAHPUNIN  
AWANARU´KUCHACHIN YA´WATU KANTA  
PA´PUYAKU INAPUCHIN NIHSARAWESU

### SIÑURUWISE MIXTO

**URINTA SINTANUYAHPIACHIN**, tuhkumintunwan N° 07877543, ya´werawe inake....., Kema. Nispitarawatenken nunsarawe:

#### I. NAHTANTERESU:

We´sarawe, sahkateranken, nahtanaikensu

A´NARUMARAHCHIN PA´PUYAKU, UHKUWIKU INA PIYAPI KU NUYAWE ICHIYA´WERINKUSU, AMA AHKETE INAUCHINKUSUWE, ihesu tinunsia pa´sarín wa´wawe pa´pinmare.

NUWIRIU PARASIU KURE, ihseke ya´werin..... nani taweri aweinku, un´wirinku ni´tun, wa´wawenta inauterinchachin, ya´wein ihsupuchin ni´tun.

#### II. NU´TEHKEN, IHSUPUCHIN

1. Tinunsiararawesu, munshiwe, wara´pu yuhkikeraware, kahtu waranka iskun pi´ikeraware nanpirawe, inake inaupichin, wa´wawe wa´waterin Karin. Nahpururawakeran ku nuyawe ichiya´werinku, wa´wawenta ku na´kun yuhki ya´wechahtapirinwen inauterinkui.  
Nani awarinchi u´uhpachina, un´witeraya kehpariterin, uhshamarenta inauterinku, ikiananterinku, nanan nahpunin nunin, ina ku nuyawe akurinku.
- 2- Nani inapuchin na´kun piif na´werin, nani tinunsia pu´mutupirawe Punisiake, ku manta nihpiwe, nani a papirawe, ku nuwanterinwe pakakasu, ahkete awerinku, un´wirinkukeran niterinku tiriichunuwe ku nispitarinwe.
- 3.- Tinunsiarawe pihkeran, ahkete pinurinku, ahkete aweraranken iterinku, wa´wawe uhseretainkusu yunkirin, nahpatun ,we´sarawe kemahtake kahtawaku kanta.

- 4.- Ama akehte inauchin nanpika'umarewe, ku naniterawe ahkete ya'weka'wasu ku nuwanterawe inaruku ni'tun, nahtanaranken ina piyapi aweahrinkusu, kemari uhkuwike, a'pake, ama ayankinta'nsu, nuya kanta ya'weka'umare wa'waweru'ku.

### **III. IHSUPUCHIN TIRIHCHU YA'WERIN**

Ihsu nahtantarawesu, na'kunLey, ya'werin ni'tun, ihsupita ina:Decreto Supremo N° 0006-97-JUS, Texto Único Ordenado N° 002-97-JUS, y sus modificatorias Ley N° 27306 y N° 27982.

### **IV. KIRIHKA YU'SARAI:**

1. Wa'wawe parihititanen
- 2.- Kupia tinunsiatarawesu inauchin nanpirawesu
- 3.- Kupia ina nahtantarawesu nanpirawemare
- 4.- Nuhturu tantiarinkusu ina awerinkusupita, nu'wirinkusupita.

### **V. KIRIHKARU'SA:**

- 1.A Kupia tuhkumintunuwe.
- 1.B Wa'wawe parihititanen.
- 1.C Kupia tinunsiatarawesu inauchin nanpirawesu.
- 1.D Kupia ina nahtantarawesu nanpirawemare.
- 1.E Nuhturu tantiarinkusu ina awerinkusupita, nu'wirinkusupita.

### **NAHPATUN INAPUCHIN NUNAWESU:**

Nahtanaranken, kema, kemari nihke inapuchin nahtanarankensu.

Ninanu, kahtawini taweri, tuken yuhki nihsawasu,  
kahtu waranka shunka kahtawini pi'i.

-----  
APUKATU

-----  
TINUNSIATARINSU

## KIRIHKA 5

Escrito N° 01

Denuncia Penal por Homicidio

**Siñuru: Wisekar Purupinsiar Pinare**

**NISTURU NURA KUCHA**, tuhkumintunuwe....., ya´werausu ninanu a´wake....., kemahke tehsarawe:

Ihsupuchin kahtawarinpusu ya´werin artihkururu´sake 1° y 11° Tihkirihtu Riisteratipu N° 052, Ley Inankenchachin Ministiriu Ya´ipimare, nahpatun tinunsiararawe TEHPATERIN NI´PI NI´TUN, ya´werin nishipi ni´tun artihkuru 108° inciso 1° Kutihku Pinareke, insuwitana tehpetupisu nahtanatawatuma kenayatakasu, ihsupita kanpu piyapi´sasa ina Ninanua´wake ya´wepisu inake ya´wepisu.....), ihsupuchin ni´tun:

### 1. IHSUPUCHIN

- 1.1. Iyawe NITU NURA KUCHA, niyarin kara shunka tawerinnihsawasu, Chimiwayan yuhkike, kahtu waranka shunka kahtu pií nihsawasu, peikeran pihpirawatun pa´nin. i´waraya, Kara ura nihsapasu, Ninanua´wakeran.....nahpuruihchin ina ninanua´wake ni´pi piyapi´sari; Nihpirinwe ku yunkiahsuiwe, ya´nurin chimipi, kara shunka taweri nihsawasu Ñuñu yuhkieke, nani pa´pitakaisu nihsapirinwe, shunka ya´piri, ina parihti ya´wepihsuari.
- 1.2. Ina yanutui ni´nai, kenanai aweatuna tehpati, nahpumatarawatun mahkirapinen, sa´purunen matupi, ina yunkiaterei keyasu tehparawatuna matupi paántaimare inawita pa´anpihsuari, nahpapunawe, ku nuwiteraiwe, inake ya´wepisupitariteranta.
- 1.3. Nihpirinwe ku ya´ipi wamiriari´sari ni´piwe, ina pihkeran Purisiarichachin pa´piterin nani nuhtuwaru chanatasu. Nahpatun ynkirai ina na´kun, na´kun nanan ya´werin nihkakasu, nahtantakasu Ley teninchachin.
- 1.4. Nu´tehken nani tinunsiatupirawe Punisiake, Wisekarike ihsuchi kirihka ya´weri nihpirinwen.

Ku manta ya´werinwe, nahpatun nahkeranchachin tinunsia pu´muantararawe, nituhtaúmare, inakarita iyawe tehparin, unpanta wa´anusa ku manta tunpiwe, ma´ta ya´werin, nihka ina tehpatunapire, ma´mareta pu´upi

## **2. IHSUPUCHIN LEY YA´WERIN**

Ihsu tinunsiatarawesu, ihseke ya´werin artihkuru 108° inciso 1 Kutihku Pinare, inake tenin, tahshinapeitakaisu ku shunka a´naterahpu pi´i, pihkeranwe, ina tehkapun tehsarin, shunka a´naterahpu pi´i, ahketeran, piyapi tehparinsu.

## **3. KIRIHKA YU´SARAI**

- 3.1. Kupia tuhkumintu
- 3.2. Kupia tuhkumintu del occiso teninsu
- 3.3. Kupia kirihka ina chimipinken
- 3.4. Kupia kirihka ina yanupisu yahchapisu
- 3.5. Shawirapipisu, ni´pisuari ina chimipi.

## **NAHPATUN INAPUCHIN NUNAWESU:**

Nahtanaranken nihku sahkatu, nahtantuku, nutehken ina iyawe tehparinsu.

Ninanu, kahtawini taweri, tuken yuhki nihsawasu, kahtu waranka shunka kahtawini pi´i

-----  
APUKATU

-----  
TINUNSIATARINSU

## KIRIHKA 6

Exp.

**TIMANTATARAWÉ TE YATAUMARE,  
TEWANANPITERINKU NI'TUN**

### **SIÑURU WISE WAMIRIARU SAMARECHACHIN NINANSU**

**SERIA PIRA ANKURU**, tuhkumintunuwe N° 12345678, ya'werausu, ihšu yunkirawesu, kemahke. Nispitarawatenken tehsarawe:

#### **I. NAHTANTERESU:**

Timanatatarawe NI TE YATA'IMARE, TEWANAPITERINKU NI'TUN, ihšu ina su'yawe, NUPINSARUPAPINICHU, ya'werin .....  
..... NAHTANTARAWÉ, sah'wiina, ku ahkete ya'weka'imarewe, nahpumantarawatun, NAHTANTARAWÉ KAHTAWAINAKU, unpuina Ley tenin ihšuke Artihkuru. 483 Kutihku Purisisar Sipiri napurin:

- a) Niin, ihšu tinunsiatarauke, nitihki'in, ta'wanchin, nahpapunawe ku ahkete ma'sha ya'weterinkuiwe, ina sha'witaranken.
- b) Ya'we'in pinsiun kusharumare, kara wa'wauwitamare ihšu nahpu, S/.....,
- c) Ya'we'in kahke wa'waupita, inapuchin kirihkake nishiina.

#### **II. IHSUPUCHIN YA'WERIN NI'TUN:**

Ihseke timantatarinsu sha'wikapun:

1. Unpu tewanapiterinkenta, unpu nunpinterinkenta
2. Se explica cuáles son los gastos de los hijos que justifican la pensión que se pide. Sha'wire unputa kastu ninesu ina wa'waru'samare, ina nu'tehken sha'wikasu, ku nunpinkasuwe
3. Inake sha'wikasu ma'mareta wa'wanpita kemahtake ya'wekasu yunkirin.

#### **II. IHSUPUCHIN LEY YA'WERIN NI'TUN:**

Ihsupuchin ley ya'werin, inciso 1 Artihkuru 333° Kutihku Sipiri, inake nunin tewanapitupachinpura ina nine nite'yatakamare, Artihkuru 348° inakechachin

tenin. Inaran artihkuru 483°, tenin: Nitimantakasu, inake yunkikasu ma tiriichuta ya'weterinkema, ma sahkatauta kahtuya'pinkemachachin nihkakasu ya'weterinkema.

#### **IV. UNPANTA :**

Ihsu timantatarawesu, anuwitarawe, inauchin nuninsu ihisu artihkuruke 480° Kutihku Sipirike.

#### **V. WISE INAMARECHACHIN:**

Inapuchin sahkatonen imahsaransu, inamarechachin, ina ya'werin ihisu kirihkake inciso 2 artihkuru 24° Kutihku Sipirike, inamare sha'witaranken insehkesuna irahka ya'weraisu inaruku ihseke.....

#### **VI. KIRIHKARU'SA YA'WERIN:**

Ihsupwita ina: Kirihka ni manaisu, tewanantepiterinkusu, wa'waupita ma'sha nuwanterin ni'tun.

#### **NAHPATUN INAPUCHIN NUNAWESU:**

Kema siñuru Wise, kahtawaku yu'ke ihisu kirihka timantatarawesu, kirihkaru'sa ya'werin ni'tun, ya'ipi kastu nihkakasu irateresukeranchachin inamare, pihpikamare ina nanan anuhtakamare, nanisu pihpipachinsu tehkakamare, pihpirin ihisu timantatupisu, unpuna kastu nininsu nihkakamare.

Ninanu, kahtawini taweri, tuken yuhki nihsawasu, kahtu waranka shunka kahtawini pi'i.



# A'NA KIRIHKARU'SAKERANTA UHKUWIPISU

Kutihku Sipiri

Kutuhku Pinare

LKutihku Purisisare Sipiri

Kutihku Purisisare Kuntitusiunar

Kutihku Purisisare Pinare

Constitución Política del Perú. Kuntitusiun Puritika Pirunken

**Kunpiñu 169 OIT itupisuke**, Tratados, Internacionales

Nasiunu'sa yamurawatuna yunkipisu sobre los Derechos de los Pueblos

Indígenas.

Tihkiritu Ley 22175, Ya'yuyi Kanpu Ninanaua'waru'samare, Piruke ya'wepisumare,

Tantiyapisu, unpu sakatakaisuna Ustisiake Kanpu ninanua'wake, ina ya'werin San Martinke, kahtu waranka shunka kara pi'i nihsawasu ina karihka nihpi



PROGRAMA FINANCIADO  
POR LA UNIÓN EUROPEA